

**WHY ARE (OR WERE) SPANISH BANKS SO PROFITABLE?**

**ANTONIO TRUJILLO-PONCE**

**FUNDACIÓN DE LAS CAJAS DE AHORROS**  
DOCUMENTO DE TRABAJO  
Nº 616/2011

De conformidad con la base quinta de la convocatoria del Programa de Estímulo a la Investigación, este trabajo ha sido sometido a evaluación externa anónima de especialistas cualificados a fin de contrastar su nivel técnico.

ISSN: 1988-8767

La serie **DOCUMENTOS DE TRABAJO** incluye avances y resultados de investigaciones dentro de los programas de la Fundación de las Cajas de Ahorros.

Las opiniones son responsabilidad de los autores.

# WHY ARE (OR WERE) SPANISH BANKS SO PROFITABLE?

Antonio Trujillo-Ponce\*

## Abstract

This paper analyzes empirically the factors that determine the profitability of Spanish banks for the period of 1999-2009. The results obtained by applying the system-GMM estimator to a large sample of Spanish banks indicate that higher bank profitability during these years is associated with a larger percentage of loans in total assets, a higher proportion of customer deposits, better efficiency, and a lower credit risk. In addition, higher capital ratios also increase the bank's return, although this finding applies only when using return on assets (ROA) as the profitability measure. We find no evidence of either economies or diseconomies of scale or scope in the Spanish banking sector. On the other hand, all industry and macroeconomic determinants, with the exception of interest rate, affect bank profitability in the anticipated ways. Finally, our study reveals differences in the performance of commercial and savings banks.

*Keywords:* Bank profitability; Commercial banks; Savings banks; European banking system.

*JEL classification:* G21; G32; L11.

\*Department of Business Administration, Pablo de Olavide University, Carretera of Utrera Km 1, (41013) Seville, Spain. *E-mail address:* atrupon@upo.es

**Acknowledgements:** We would like to thank the Regional Government of Andalusia for their financial support (Project of Excellence P09-SEJ-4467).

## 1. Introduction

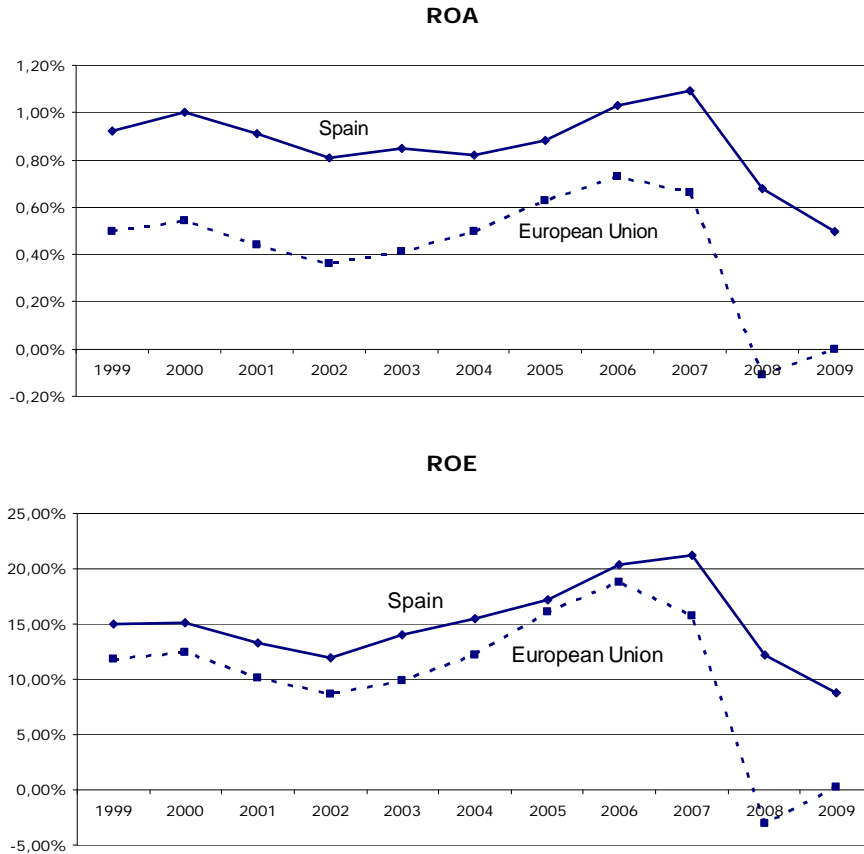
In the past decade, Spanish banks have been significantly more profitable than those of the European Union as a whole (see Figure 1). In addition to this superior performance, the Spanish banking sector is among the five most important in Europe in terms of both assets managed and numbers of credit institutions, branches, and employees (see Table 1), which makes it interesting to study.<sup>1</sup> Profitability is necessary for a bank to maintain ongoing activity and for its shareholders to obtain fair returns. However, it is also important for supervisors because it guarantees more flexible capital ratios, even in the context of a riskier business environment. This higher profitability does not appear to have been achieved at the expense of the soundness of the banking system, which was characterized by a good level of provisions during those years. The Bank of Spain, being aware of the cyclical nature of credit losses, introduced dynamic provisioning (also known as statistical or generic provisioning) in 2000. This system requires banks to build up loan loss reserves in good times to be drawn on in economic downturns as losses increase. Because of this, the Spanish banks had accumulated a significant buffer, in comparison with banks in other developed countries, to cover their incurred losses when the current economic crisis began and so most of them faced the first years of the economic crisis with good levels of solvency.

**Table 1.** Main data of the European banking sector (December 2009)

Country	Credit Institutions	Branches	Employees	Total Assets (EUR billion)
Austria	855	4,172	78,794	1,034.0
Belgium	102	4,201	62,199	1,217.8
Denmark	149	1,760	45,935	802.2
Finland	325	1,606	24,879	363.2
France	313	38,545	458,370	7,656.7
Germany	2,121	39,441	663,000	7,436.1
Greece	66	4,079	65,682	418.7
Ireland	80	809	38,178	1,306.7
Italy	788	34,036	328,582	3,747.7
Netherlands	93	2,358	79,700	2,231.0
Norway	146	1,184	20,100	444.6
Portugal	43	6,400	56,965	491.7
<b>Spain</b>	<b>352</b>	<b>44,431</b>	<b>269,483</b>	<b>3,238.2</b>
Sweden	117	1,934	40,193	571.9
Switzerland	325	3,458	107,546	1,776.3
<b>United Kingdom</b>	<b>332</b>	<b>10,120</b>	<b>431,665</b>	<b>8,577.3</b>

Source: European Banking Federation (available at <http://www.ebf-fbe.eu>)

<sup>1</sup> Spain has the largest number of bank branches per capita in Europe: approximately 11.6 per 10,000 inhabitants over 16 years of age. This high ratio is a differentiating characteristic of the Spanish banking system, which places high priority on geographic proximity to the customer. However, in recent years, many banks have reduced their numbers of offices as a result of the economic crisis given the high operating costs of maintaining such a large network. Even so, Spanish banks continue to lead the European rankings in this respect.



Sources: Bank of Spain (Spanish banks, 1999 to 2003) and European Central Bank (all others).

**Figure 1.** Profitability of Spanish and European banks (consolidated banking data).

To better understand the underlying mechanisms of bank performance in Spain for research purposes, some background information is required. Spanish banks can be grouped into two main categories: commercial banks and savings banks —the so-called *cajas*—. The savings banks were created in the 19<sup>th</sup> century as non-profit entities with the object of promoting savings and combating usury for social welfare purposes. However, today, they conduct their activity in a similar way to the commercial banks, although they are subject to certain operating limits because they must devote part of their profits to social causes. In most cases, the governance of the savings banks remains in the hands of local public authorities; hence, a high proportion of these entities focus their activities in the region where they were created, although there is greater openness to regions other than the region of origin in recent years. By the end of 2009, commercial and savings banks accounted for 91.5% of the total credit granted to the resident private sector and 93.4% of deposits from this sector, being the savings banks' market share several percentage points higher than that of the commercial banks in terms of both loans (48.0% versus 43.5%) and deposits (52.8% versus 40.6%). However, although at the end of the year there were 47 domestic

commercial banks and 45 savings banks in Spain; during 2010 the banking sector underwent a major restructuring process involving mainly the savings banks. Forty of them participated in some type of integration process, reducing their number dramatically (17 savings banks or groups of savings banks as compared to the 45 formerly existing institutions).<sup>2</sup>

There is an abundant literature on the determinants of bank profitability both in the USA and in Europe, as we will see in the following section. Despite this, given the present strategic importance of the Spanish banking system in Europe and because a number of years have passed since the most recent studies were conducted —e.g., Carbó Valverde et al., 2007, analyze data from the Spanish market in the 1994-2001 period— we believe it is appropriate to re-examine the bank profitability drivers in Spain. In this context, our paper complements the previous literature by analyzing the factors that have allowed the Spanish banking system to be among the most profitable of the European Union from the introduction of the Euro in 1999 up to 2009, two years after the start of the current financial crisis. To do this, we use the generalized method of moments (GMM) estimator developed for dynamic panel models by Arellano and Bover (1995) and Blundell and Bond (1998), also referred to as the system-GMM estimator, which has been used in recent studies on determinants of bank profitability (e.g., García-Herrero et al., 2009; Dietrich and Wanzenried, 2011)<sup>3</sup>; this econometric technique allows us to control for endogeneity and unobserved heterogeneity. On the other hand, we also investigate whether significant differences between the commercial banks and savings banks during this period can be observed that might explain the worse performance apparently demonstrated by the savings banks following the onset of the financial crisis in late 2007 —savings banks operate in almost all countries, although it is in Spain where they have become more relevant in the last decade.<sup>4</sup>

The paper is structured as follows. Section 2 reviews the most significant empirical studies and develops our research hypotheses. Section 3 describes the data and methodology employed in the empirical research and also defines the explanatory variables. Section 4 presents and discusses the results obtained. Section 5 summarizes and concludes.

---

<sup>2</sup> See Appendix 1 for a brief description of this restructuring process.

<sup>3</sup> We also use simpler methodologies, such as ordinary least squares (OLS) and static fixed-effects panel data models, in the robustness checks.

<sup>4</sup> On a global scale, Spain is second only to Germany in terms of the volume of assets managed by the savings banks; in fact, if we consider this volume in relative terms as the proportion of total of assets administered by the entire banking system of the country, Spain ranks ahead of Germany (see World Savings Banks Institute (WSBI) Member Statistics 2009, available at <http://www.wsbi.org>).

## 2. Literature review and research hypotheses

According to previous studies, the factors determining the profitability of banks fall into two main groups. First, there is a group of determinants of profitability that are specific to each bank and that, in many cases, are the direct result of managerial decisions (asset structure, asset quality, capitalization, financial structure, efficiency, size, and revenue diversification). The second group of determinants includes factors relating profitability to the industry structure and to the macroeconomic environment within which the banking system operates, such as industry concentration, economic growth, inflation, and interest rates.

### 2.1. Asset structure

Most of the banking literature agrees that a bank's profitability is expected to increase as its portfolio of loans grows in relation to other more secure assets (such as government securities), taking into account the known relationship between risk and return (the so-called risk-return trade-off). Despite the higher operating costs of holding a large portfolio of loans, bank profitability should increase with a higher ratio of loans to assets as long as interest rates on loans are liberalized and the bank applies mark-up pricing (García-Herrero et al., 2009). This greater relative proportion of loans in the portfolio of the bank is usually coupled with a greater liquidity risk arising from the inability of banks to accommodate decreases in liabilities or to fund increases on the assets side of the balance sheet; consequently, a bank holding a low proportion of liquid assets (with greater liquidity risk) is more likely to earn high profits. Among the studies that report a direct relationship between relative percentage of loans in bank assets and profitability—or, similarly, an inverse relationship between liquidity and profitability—are Abreu and Mendes (2002), Angbazo (1997), Barros et al. (2007), Chiorazzo et al. (2008), DeYoung and Rice (2004), Goddard et al. (2004a), Iannotta et al. (2007), Molyneux and Thornton (1992), and Pasiouras and Kosmidou (2007). This finding leads us to the first of our hypotheses to be tested:

*Hypothesis 1: There is a positive relationship between the relative percentage of loans in the assets of a bank and its profitability.*

### 2.2 Asset quality

There seems to be a consensus that bank profitability is directly related to the quality of the assets on its balance sheet; i.e., poor credit quality has a negative effect on bank profitability and vice versa. This relation exists because an increase in the doubtful assets, which do not accrue income, requires a bank to allocate a significant portion of its gross margin to provisions to cover expected credit losses; thus,

profitability will be lower. Therefore, the evolution of the impairment losses on loans and receivables explains a large part of the profitability of both commercial and savings banks. Among the studies that show a direct relationship between profitability and asset quality are Angbazo (1997), Alexiou and Sofoklis (2009), Athanasoglou et al. (2008), Chiorazzo et al. (2008), DeYoung and Rice (2004), and Hernando and Nieto (2007). Consequently, we formulate the following hypothesis:

*Hypothesis 2a: There is a positive relationship between the quality of the assets of a bank and its profitability.*

However, if the financial system is well remunerated – that is, if prices are set in accordance with the risk incurred – to the extent recommended in the new banking regulation (Basel II and, more recently, Basel III), riskier loans should produce higher interest income, with a positive impact on profitability (Iannotta et al., 2007; Kasman et al., 2010). Moreover, higher loan quality typically implies more resources devoted to credit underwriting and loan monitoring, thus increasing bank costs (Mester, 1996). These arguments lead us to a new hypothesis positing an opposite relationship from the previous one.

*Hypothesis 2b: There is a negative relationship between the quality of the assets of a bank and its profitability.*

### **2.3. Capitalization**

There are several reasons to believe that a better capitalized bank should be more profitable. First, Berger (1995b) points to the expected bankruptcy costs hypothesis as a cause of all or part of the observed positive relationship between capital and profitability. For a bank with capital below its equilibrium ratio, expected bankruptcy costs are relatively high, and an increase in capital ratios raises expected profits by lowering interest expenses on uninsured debt.<sup>5</sup> In this same vein, Athanasoglou et al. (2008) state that this positive impact can be due to the fact that capital acts as a safety net in the case of adverse developments. This relation would help the bank to finance its assets at more favorable interest rates, increasing expected profitability and offsetting the cost of equity, which is considered to be the most expensive bank liability in terms of expected return (García-Herrero et al., 2009). Another alternative theory that Berger (1995b) developed to explain this direct relationship between capital and profitability is the signaling hypothesis. Under this theory, bank management signals private information that future prospects are good by increasing capital. Finally, a third interpretation relies on the effects of the Basel

---

<sup>5</sup> Berger (1995b) defines expected bankruptcy costs as the probability of bank failure times the deadweight liquidation costs that must be absorbed by creditors in the event of failure.



Accord, which requires banks to hold a minimum level of capital as a percentage of risk-weighted assets. Higher levels of capital may therefore denote banks with riskier assets, which translate, in turn, to higher revenues that increase the profitability of the bank (Iannotta et al., 2007). The empirical studies observing this positive relationship between capital and profitability are abundant, including Alexiou and Sofoklis (2009), Angbazo (1997), Athanasoglou et al. (2008), Berger (1995b), Bourke (1989), García-Herrero et al. (2009), Iannotta et al. (2007), Lloyd-Williams et al. (1994), Molyneux and Thornton (1992), and Pasiouras and Kosmidou (2007). We therefore also expect a direct association between capital and profitability.

*Hypothesis 3: There is a positive relationship between the amount of capital of a bank and its profitability.*

#### *2.4. Financial structure*

Over the past decade, against a background of credit growth and favorable conditions in international financial markets, many European banks have financed an increasing portion of their growth by resorting to the medium- and long-term wholesale markets; although this decision has afforded banks greater flexibility in their financial structure, the cost has been greater than it would have been if the financing had been in the form of bank deposits. In this context, a higher share of customer deposits in bank liabilities should increase a bank's profitability, considering that deposits constitute a cheap and stable financial resource compared with other financing alternatives (Claeys and Vander Vennet, 2008; García-Herrero et al., 2009). Thus, we examine whether there is a direct relationship between the proportion of customer deposits in a bank's total liabilities and the bank's profitability.

*Hypothesis 4a: There is a positive relationship between the proportion of customer deposits of a bank and its profitability.*

On the other hand, an aggressive commercial policy or the difficulties of accessing international funding markets —particularly since the start of the financial crisis in late 2007— could lead banks to pay higher rates to attract deposits from competitors (the so-called “deposit war”), thus squeezing bank margins. We test whether high rates of growth in customer deposits are achieved at the expense of a reduction of the net interest margin.

*Hypothesis 4b: There is an inverse relationship between the growth rate of customer deposits of a bank and its profitability.*

## 2.5. Efficiency

Since the early 1990s, advances in information, communications and financial technologies have allowed banks to perform many of their traditional services more efficiently. Consequently, the cost-to-income ratio, a proxy for operational efficiency, has been declining almost everywhere to different degrees (Albertazzi and Gambacorta, 2009), meaning that banks have lower expenses for a given level of output. Previous studies suggest a positive and highly significant effect of efficiency on profitability (see, for example, Alexiou and Sofoklis, 2009; Athanasoglou et al., 2008; Dietrich and Wanzenried, 2011; García-Herrero et al., 2009; and Pasiouras and Kosmidou, 2007, among others). This relation would imply that operational efficiency is a prerequisite for improving the profitability of the banking system, with the most profitable banks having the lowest efficiency ratios. On the other hand, Berger and Humphrey (1994) note that managerial ability in controlling costs (the so-called X-efficiency) is much more important than economies of scale and scope are —on average, banks may have costs about 20% higher than the industry minimum for the same scale and product mix because of poor management. Also, Berger (1995a) concludes that X-efficiency, or superior management of resources, is consistently associated with higher profits. Therefore, we examine whether there exists a direct relationship between efficiency and profitability in the Spanish bank system.

*Hypothesis 5: There is a positive association between the efficiency of a bank and its profitability.*

## 2.6. Size

We expect a positive relationship between size and profitability based on the view that a larger size should allow the bank to obtain economies of scale. Several recent studies adopt this premise, such as Alexiou and Sofoklis (2009), Iannotta et al. (2007) and Mercieca et al. (2007). However, there is consensus in the literature that the average cost curve in banking has a relatively flat U-shape, with medium-sized banks being slightly more scale efficient than either large or small banks are. Only small banks appear to have the potential for scale efficiency gains, and the measured economies are usually relatively small —on the order of 5% or less (Berger and Humphrey, 1994). In other words, the effect of size could be non-linear, with profitability initially increasing with size and then declining for bureaucratic and other reasons (Athanasoglou et al., 2008). On the other hand, larger size may also imply economies of scope for the bank resulting from the joint provision of related services (for example, banks could sell to their customers life and/or home insurance together with mortgage loans using their branch networks). Although Elsas et al. (2010) conclude that

economies of scope are pronounced in banking, increasing its profitability, Barros et al. (2007) find that bigger and more diversified banks are more likely to perform poorly, suggesting that smaller and specialized banks can reduce asymmetric information problems associated with lending.

The preceding arguments lead us to formulate two hypotheses of different signs. In principle, one would expect that larger banks experience larger increases in profitability through economies of scale. However, above a certain threshold of size, diseconomies of scale could arise, making the size of the bank a negative determinant of its profitability. To this situation we must add the (uncertain) effect of bank size on profitability derived from possible economies of scope in addition to a possible “too-big-to-fail” argument in favor of larger size.<sup>6</sup>

*Hypothesis 6a: There is a positive relationship between bank size and bank profitability.*

*Hypothesis 6b: There is a negative relationship between bank size and bank profitability.*

## 2.7. Revenue diversification

The decline in interest margins during the last decade has changed the traditional role of banks and forced them to search for new sources of revenue. In this context, Elsas et al. (2010) find that, initially, commercial banks typically increase diversification by moving into fee-based businesses. Then they expand their business into trading activities or by underwriting insurance contracts. As stated previously (see part 2.6), the effect of diversification of income on bank profitability is not clear.<sup>7</sup> Recently, both Chiorazzo et al. (2008) and Elsas et al. (2010) conclude that revenue diversification enhances bank profitability via higher margins from non-interest businesses. However, many previous studies (Acharya et al., 2002; DeLong, 2001; DeYoung and Rice, 2004; Morgan and Katherine, 2003; Stiroh, 2004; and Stiroh and Rumble, 2006; among others) show that greater diversification of the banking business does not necessarily translate into an improvement of the bank's profitability; it may, in fact, be detrimental to profitability. A reduction of the interest rates applied to certain loans with the object of capturing customers for other products and services offered by the bank could cause such a detriment; i. e., the profit on those other activities may not be enough to compensate for the interest reduction (Lepetit et al., 2008). Thus, empirical studies do not provide conclusive evidence in support of any single hypothesis on the effect of

---

<sup>6</sup> The “too-big-to-fail” argument states that large banks may benefit from this implicit guarantee that, other things being equal, has the effect of decreasing their cost of funding (Iannotta et al., 2007).

<sup>7</sup> Because banks of similar size may present different degrees of diversification, we include this variable as a determining factor of profitability independent of bank size, although it is likely that a larger bank could offer more different revenue-generating services.

revenue diversification. Therefore, again, we put forward two opposing hypotheses to be tested.

*Hypothesis 7a: There is a positive relationship between the revenue diversification of a bank and its profitability.*

*Hypothesis 7b: There is a negative relationship between the revenue diversification of a bank and its profitability.*

## *2.8. Industry concentration*

Two theories are proposed to explain how the degree of sector concentration affects bank profitability. The structure-conduct-performance hypothesis (also referred to as the market-power hypothesis) states that a more concentrated sector favors bank profitability motivated by the benefits of greater market power, which reflects the setting of prices that are less favorable to consumers (lower deposit rates, higher loan rates) as a result of competitive imperfections in these markets (monopoly profits).<sup>8</sup> On the other hand, the efficient-structure theory explains the positive relationship between concentration and profitability as an indirect consequence of efficiency, to which we referred in part 2.5. It argues that the better managed banks or those with more efficient (and thus more profitable) cost structures could see their market shares increase, resulting in a higher degree of concentration; i.e., the increased profitability would not be a consequence of greater market power but rather the indirect result of an improvement in efficiency.

The empirical evidence on the relationship between concentration and profitability is not conclusive. Whereas Claeys and Vander Vennet (2008), Goddard et al. (2004a), and Maudos and de Guevara (2004), among others, report evidence from Europe favoring the structure-conduct-performance theory, other studies (see, for example, Athanasaglou et al., 2008; Berger, 1995a; García-Herrero et al., 2009; and Pasiouras and Kosmidou, 2007) find no relationship between the degree of concentration of the sector and bank profitability; some even show an inverse relationship between the two. We hypothesize a direct association between industry concentration and bank profitability in Spain.

*Hypothesis 8: There is a positive relationship between the concentration of the banking sector and its profitability.*

---

<sup>8</sup> A special case of this theory is the relative-market-power hypothesis, which suggests that only firms with large market shares and well-differentiated products are able to exercise market power and earn non-competitive profits (Berger, 1995a).

## 2.9. Economic growth

Bad economic conditions can worsen the quality of the loan portfolio, generating credit losses and increasing the provisions banks need to hold, thus reducing bank profitability. In contrast, an improvement in economic conditions, in addition to improving the solvency of borrowers, increases demand for credit by households and firms, with positive effects on the profitability of banks (Athanasoglou et al., 2008; Calza et al., 2003; among others). In the same vein, Albertazzi and Gambacorta (2009) conclude that the pro-cyclical nature of bank profits derives from the effects that the economic cycle exerts on net interest income (via lending activity) and loan loss provisions (via credit portfolio quality). Other recent studies that observe cyclical movements in bank profitability are Athanasoglou et al. (2008), Bikker and Hu (2002), Demirguc-Kunt and Huizinga (2000) and Dietrich and Wanzenried (2011), among others. Thus, we hypothesize that:

*Hypothesis 9: There is a positive relationship between economic growth and bank profitability.*

## 2.10. Inflation

Revell (1979) introduces the issue of the relationship between bank profitability and inflation, stating that the effect of inflation on bank profitability depends on how inflation affects both salaries and the other operating costs of the bank. In this context, Perry (1992) concludes that the extent to which inflation impacts bank profitability depends on whether the extent of inflation is fully anticipated. If the inflation rate is fully anticipated by the bank's management, the bank can adjust interest rates appropriately to increase revenues faster than costs, which should have a positive impact on profitability. Recent studies (Alexiou and Sofoklis, 2009; Athanasoglou et al., 2008; Claeys and Vander Vennet (2008); García-Herreto et al., 2009; Kasman et al., 2010; Pasiouras and Kosmidou, 2007) confirm a positive relationship between inflation and profitability. We therefore also expect a direct association between the two variables.

*Hypothesis 10: There is a positive association between inflation and bank profitability.*

## 2.11. Interest rates

An environment of low interest rates coupled with fierce competition among banks could limit the possibilities for banks to establish appropriate prices for their loans and deposits, putting pressure on the operating margin and negatively affecting banks' profitability. Among the studies that report a positive relationship between interest rates and bank profitability are Bourke (1989), Claeys and Vander Vennet (2008), Demirguc-Kunt and Huizinga (1999), García-Herrero et al. (2009), Molyneux and Thornton

(1992), and Staikouras and Wood (2003). We hypothesize a positive association between these two variables in Spain.

*Hypothesis 11: There is a direct relationship between interest rates and bank profitability.*

### 3. Methodological aspects

#### 3.1. Sample

Our sample comprises all Spanish commercial banks, savings banks and credit cooperatives in the Bankscope database during the period 1999–2009 that have information available for all of the variables analyzed.<sup>9</sup> However, those entities that present abnormal ratios or extreme values are eliminated from the sample as outliers. After completing this filtering, the final sample consists of 89 banks, of which 28 correspond to commercial banks, 45 to savings banks and the rest to credit cooperatives. Table 2 shows the number of observations that compose the sample by bank category.

**Table 2.** Number of banks and observations by bank category.

	Commercial banks	Savings banks	Credit cooperatives	All
No. of banks	28	45	16	89
No. of observations	174	422	101	697

We take the bank-specific information from the Bankscope database compiled by Bureau van Dijk Electronic Publishing, which includes income statements and balance sheet information. As in other similar studies, we use unconsolidated statements; this choice prevents relevant differences in profit and loss statements and balance sheets of headquarters and subsidiaries from negating each other (García-Herrero et al., 2009).<sup>10</sup> We get the data on industry concentration from the European Central Bank (ECB) reports on EU banking structure, while macroeconomic data are taken from the Spanish National Statistics Institute (INE), except for interest rates, which are obtained from the statistics of the ECB.<sup>11</sup>

#### 3.2. Definition of variables

##### 3.2.1. Dependent variable

<sup>9</sup> Because in many cases we do not have available all of the financial statements of each bank for the complete time horizon and some of the banks either merged or went bankrupt, we have unbalanced panel data. However, to ensure consistency of the model, we require banks to have data for at least five consecutive years to be included in the sample.

<sup>10</sup> Despite the above decision, in a few observations we use some bank-specific variables obtained from consolidated statements (information related to non-performing loans and/or the capital adequacy ratio) when they are unavailable from the unconsolidated statements.

<sup>11</sup> The ECB Reports on banking structure are available at <http://www.ecb.int>.

We use as the dependent variable two measures of profitability widely employed in the banking literature.<sup>12</sup> The first of these, the return on assets (ROA), is perhaps the single most important ratio for comparing the efficiency and operational performance of banks. This ratio considers the returns generated from the assets that the bank finances; it is primarily an indicator of managerial efficiency, although it may be misleading due to off-balance-sheet activities. Second, we use the return on equity (ROE), which is a measure of the return on shareholder funds. Both variables are calculated by using average values in the denominator, and we use pre-tax values to avoid distortions of our conclusions due to the tax system. Because ROE equals ROA times the total assets-to-equity ratio, this ratio could be high at the expense of an over-leveraged balance sheet; therefore, banks with higher leverage, and thus lower equity, generally report lower ROA but higher ROE.<sup>13</sup> Although Athanassoglou et al. (2008) state that an analysis based on ROE disregards the risks associated with leverage, Goddard et al. (2004b) employ ROE as an appropriate profitability measure, arguing that for many European banks the off-balance-sheet business makes a significant contribution to total profit.

### *3.2.2. Independent variables*

Our aim is to analyze the determining factors of bank profitability in Spain during the period previously defined. We divide these factors into two groups: the bank-specific factors and the external (industry and macroeconomic) factors. Among the bank-specific factors are asset structure, asset quality, bank capitalization, financial structure, efficiency, size, and revenue diversification.

To analyze whether the way in which the assets side of a bank's balance sheet is structured affects its profitability, we use the loans-to-total assets ratio. This liquidity ratio indicates what percentage of the total assets of the bank is tied up in loans; a higher value of this ratio indicates that the bank is less liquid but predicts higher profitability (Hypothesis 1). To test Hypotheses 2a and 2b, we choose two variables: the ratio of non-performing loans to gross loans and the ratio of loan loss provisions to net loans. While the former is a measure of the amount of total doubtful loans as a percentage, the latter relates the provision for impairment losses to the loan portfolio of a bank. The increase of those two ratios would indicate a worsening in the quality of the loan assets; i.e., higher ratios correspond to worse asset quality. We use the

---

<sup>12</sup> In the previous literature, the net interest margin (NIM) is also employed as a dependent variable as a proxy for the income-generation capacity of the intermediation function of banks. However, NIM does not take into account neither the income originating from other activities of the bank nor the costs of putting these activities into operation; consequently, it is a crude measure of performance.

<sup>13</sup> It may explain why some of the previously high-ROE banks have performed particularly poorly during the recent financial crisis: their ROE is dragged down by a rapid leverage adjustment.

proportion of the bank's own funds in total assets (equity-to-total assets ratio) to examine whether the level of capitalization is a determining factor of bank profitability; we expect that high values of this ratio are coupled with larger returns for the bank (Hypothesis 3). To analyze the effect of the capital structure on the profitability of the banks, we use the ratio of customer deposits to total liabilities; we anticipate a positive relationship between this ratio and profitability, given that customer deposits constitute an inexpensive and stable financial resource compared with other financing alternatives (Hypothesis 4a). We use the annual growth rate of customer deposits to explore the hypothesis that, in the event of a “deposit war” among banks, the resulting increase in funding costs would cause a drop in their profits (Hypothesis 4b). To test Hypothesis 5, which states that more efficient banks are more profitable, we use as a proxy the cost-to-income ratio (CIR); this ratio measures the bank's overhead or running costs (the largest proportion of which is normally salaries) as a percentage of income generated before provisions. Because the effect of size on bank profitability seems to be non-linear, we use the logarithm of bank assets to accommodate this non-linear relationship.<sup>14</sup> Finally, to measure the last of the bank-specific characteristics and test Hypotheses 7a and 7b, referring to the effect of diversification of income on profitability, we use an adjusted Herfindahl–Hirschman index (HHI) similar to that employed by Elsas et al. (2010).<sup>15</sup> This new variable of our equation (HHI revenue diversification) is calculated as follows:

$$HHIRD = 1 - \left[ \left( \frac{INT}{TOR} \right)^2 + \left( \frac{COM}{TOR} \right)^2 + \left( \frac{TRAD}{TOR} \right)^2 + \left( \frac{OTH}{TOR} \right)^2 \right] \quad (1)$$

Where INT denotes gross interest income, COM denotes gross commission and fee revenue, TRAD denotes trading revenue, and OTH denotes all other gross operating income. TOR denotes total operating revenue and is equal to the sum of the absolute values of INT, COM, TRAD and OTH.<sup>16</sup>

With respect to the variables exogenous to the banks, industry concentration is also measured as a Herfindahl–Hirschman index (HHI industry concentration), which is calculated as the sum of the squares of all banks' market shares in terms of total

<sup>14</sup> Moreover, as Berger et al. (2010) suggest, we use the squared logarithm of bank assets to control for this potential non-linear relationship between size and profitability in the robustness checks.

<sup>15</sup> Stiroh and Rumble (2006) employ a similar index.

<sup>16</sup> Because this variable is a measure of revenue diversification, we use gross values to the extent that it is possible. However, in some cases, Bankscope does not provide the gross values for the commission and fee revenue and/or the trading revenue; in these cases, we use the net values. By definition, HHIRD can take values between 0 (no revenue diversification) and 0.75 (indicating a bank that generates a fully balanced revenue mix from all four business areas).



assets (in percentage).<sup>17</sup> It reflects more accurately the entry of new and smaller banks as well as the impact of a single bank with a very large market share. It is often said that a market is highly concentrated when the index exceeds 1,800 (or 0.18 if we use units instead of percentages) and unconcentrated when the index is below 1,000 (or 0.1). As discussed in the literature review, we expect that the relationship between economic growth and profitability will be positive and use the annual growth rate of the real gross domestic product (GDP) to explore this association. We measure the effect of inflation on bank profitability through the consumer price index (CPI) annual inflation rate. In addition, we take the interest rate on the main refinancing operations (MRO) of the European Central Bank, which provides the bulk of liquidity to the Spanish banking system, as a proxy for interest rates. Finally, we include dummy variables to control for bank type (commercial bank, savings bank and credit cooperative) and time effects; the latter capture the influence of potential time-varying economic variables that are not included in our equation but may affect bank profitability.

Table 3 summarizes the explanatory variables and their expected signs as considered in the present study.

---

<sup>17</sup> An alternative indicator of the degree of competition in banking markets is the Lerner index. This index is defined as the difference between the price and the marginal cost, divided by the price, and it measures the capacity to set prices above the marginal cost; it is an inverse function of the elasticity of demand and of the number of banks. The values of the Lerner index range from 0 (perfect competition) to 1 (monopoly). See, for example, Maudos and de Guevara (2004).

**Table 3.** Explanatory variables and expected signs

Explanatory Variables	Notation	Classification	Hypotheses and expected signs
<i>Bank-specific variables</i>			
Loans/Total Assets (%)	Loan/TA	Asset structure	H1 (+)
Non-Performing Loans/Gross Loans (%)	NPL/GL	Asset quality	H2a (-); H2b (+)
Loan Loss Provisions/Net Loans (%)	LLP/NL	Asset quality	H2a (-); H2b (+)
Equity/Total Assets (%)	Eq/TA	Capitalization	H3 (+)
Customer Deposits/Total Liabilities (%)	Dep/TL	Financial structure	H4a (+)
Annual Customer Deposits, growth rate (%)	DepGR	Financial structure	H4b (-)
Cost-to-Income Ratio (%)	CIR	Efficiency	H5 (-)
Total Assets, logarithm	Size	Size	H6a (+); H6b (-)
Revenue Diversification, measured as a Herfindahl–Hirschman index	HHIRD	Revenue diversification	H7a (+); H7b (-)
<i>Industry and macroeconomic variables</i>			
Industry Concentration, measured as a Herfindahl–Hirschman index	HHIIC	Industry concentration	H8 (+)
Annual real GDP growth rate	GDP	Economic growth	H9 (+)
CPI annual inflation rate	Inflation	Inflation	H10 (+)
Interest rate on the MRO of the ECB	Interest	Interest Rates	H11 (+)

### 3.3. Methodology

One of the main problems in assessing the drivers of bank profitability is the potentially endogenous character of certain determinants. For example, more profitable banks may have more resources to increase their equity; they may also find it easier to increase their customer base through successful advertising and thereby enhance profitability. Causality could even go in the opposite direction; e.g., higher bank profitability could lead to more employees and less efficiency (García-Herrero et al., 2009). In addition, some characteristics of banks affecting their profitability are difficult to measure or identify in an equation (the so-called unobserved heterogeneity); if the influence of such characteristics is not taken into account, there could be correlations between some of the coefficients of the explanatory variables and the error terms that bias these coefficients. Finally, the persistence of profitability is well documented in the literature. To deal with all of these concerns, we use the generalized method of moments (GMM) estimator developed for dynamic panel models by Arellano and Bover (1995) and Blundell and Bond (1998), also referred to as the system-GMM estimator. This is an alternative method to the first-difference GMM estimator by Arellano and Bond (1991). It estimates the regression in differences jointly with the regression in levels; i.e., the system-GMM estimator uses lagged levels of the dependent and endogenous variables as instruments for the first-difference equation, which reduces the potential biases in finite samples and asymptotic imprecision associated with the difference estimator. The consistency of the GMM estimator depends on the validity of the assumption of non-serial correlation in the error term and on the validity of the instruments. We perform two tests proposed by Arellano and Bond (1991) to test these assumptions: the Arellano-Bond test for second-order serial correlation of the differenced residuals and the Sargan/Hansen test for over-identifying restrictions, which checks the overall validity of the instruments by analyzing the sample analog of the moment conditions used in the estimation process.<sup>18</sup>

Taking into account the above-mentioned aspects, our baseline equation is as follows:

$$Y_{i,t} = \alpha + \delta \cdot Y_{i,t-1} + \beta_1 \cdot Loan/TA_{i,t} + \beta_2 \cdot NPL/GL_{i,t} + \beta_3 \cdot LLP/NL_{i,t} + \beta_4 \cdot Eq/TA_{i,t} + \beta_5 \cdot Dep/TL_{i,t} + \beta_6 \cdot DepGR_{i,t} + \beta_7 \cdot CIR_{i,t} + \beta_8 \cdot Size_{i,t} + \beta_9 \cdot HHIRD_{i,t} + \beta_{10} \cdot HHIC_{i,t} + \beta_{11} \cdot GDP_{i,t} + \beta_{12} \cdot Inflation_{i,t} + \beta_{13} \cdot Interest_{i,t} + \beta_{14} \cdot Bank\ Type\ (dummy)_{i,t} + \varepsilon_{i,t} \quad (2)$$

---

<sup>18</sup> We also report Wald tests of the joint significance of both the coefficients and the dummies, which validates the use of such variables in our equation.

Here, subscripts  $i$  and  $t$  index banks and time in years, respectively.  $Y$  denotes the dependent variable, which can be the ROA —the pre-tax return on average assets— or the ROE —the pre-tax return on average equity— and  $Y_{i,t-1}$  their lagged values.  $\delta$  measures the speed of mean reversion. A value of delta between 0 and 1 indicates that profitability is persistent but will eventually return to the equilibrium level. Specifically, values close to 0 denote a high speed of adjustment and imply a relatively competitive market structure, while a value closer to 1 implies slower mean reversion and, therefore, less competitive markets. As stated before, we consider nine bank-specific and four other variables to account for the industry and the macroeconomic environment. The notations of these explanatory variables are described in Table 3. Finally, we control for bank type by including dummy variables.  $\varepsilon_{i,t}$  is the disturbance, which contains the unobserved bank-specific effect ( $\eta_i$ ) and the idiosyncratic error ( $\nu_{i,t}$ ).

## 4. Results

### 4.1. Determinants of bank profitability in Spain

Table 4 gives an initial outline of the Spanish banking situation during the last decade. We can deduce from this outline that Spanish banks typically engage in retail-oriented activity; loans as a percentage of total assets reached a maximum of 78.4% in 2007. The strong growth of credit up to that date was largely directed towards financing the construction and acquisition of dwellings and, as in other countries of the eurozone, this was facilitated mainly by a low level of interest rates in the context of a bullish phase of the economic cycle. Most credit is financed through customer deposits, although since 2004 Spanish banks have financed a larger share of their activity by resorting to the medium- and long-term wholesale markets, as in other banking systems.<sup>19</sup> The doubtful assets ratio in the Spanish banking system remains at relatively low levels (of around 1%), while the level of coverage by provisions is high.<sup>20</sup> Similarly, the solvency ratios throughout the period under study comfortably exceed the minimum regulatory requirements; the equity ratio stands above 7% in the majority of the years of the study. There is a marked improvement in the efficiency ratio (the CIR ratio) and in the role that the income from non-interest income activities (HHIRD) seems to play in the profit and loss account. Finally, the average size of banks progressively increases throughout the study period, while the concentration of the Spanish banking system remains relatively low. All of the above characteristics enable

---

<sup>19</sup> Financing of Spanish banks is obtained on the wholesale markets through a broad range of financial instruments, including most notably medium- and long-term fixed incomes. Second in importance is asset securitization, which in Spain, unlike in other countries, has been used as a means of obtaining funds and not for transferring risk (see Cardone-Riportella et al., 2010). More financing is obtained by issuing shares, hybrid instruments (basically subordinated debt and preference shares), and short-term fixed income securities in the form of commercial papers.

<sup>20</sup> Remember that there are two types of provisions in the Spanish system: a specific provision that is point-in-time and a generic provision that is through-the-cycle.

Spanish banks to achieve high levels of profitability during this period (on average, approximately 1% for ROA and 14% for ROE) despite the abrupt change to most of the indicators as a result of the international financial crisis, the effects of which can be seen in the banks' financial statements beginning in 2008 and 2009.

**Table 4. Summary statistics for Spanish banks**

This table reports means and standard deviations (in parentheses) for the entire sample by year. The sample comprises 89 banks (697 observations). *ROA* is the pre-tax return on average assets. *ROE* is the pre-tax return on average equity. See Table 3 for a description of the rest of the variables.

Variable	Year											
	1999	2000	2001	2002	2003	2004	2005	2006	2007	2008	2009	All years
ROA	1.307 (0.406)	1.292 (0.671)	1.154 (0.573)	1.057 (0.599)	1.076 (0.549)	1.041 (0.458)	1.123 (0.497)	0.988 (0.485)	0.973 (0.487)	0.624 (0.330)	0.414 (0.271)	0.992 (0.553)
ROE	18.924 (4.581)	17.620 (6.659)	16.064 (5.801)	14.766 (6.898)	15.067 (5.713)	15.002 (4.808)	13.735 (5.635)	14.349 (6.345)	15.175 (7.086)	10.448 (4.962)	6.943 (4.306)	14.258 (6.534)
Loan/TA	59.280 (10.368)	61.378 (12.514)	63.825 (11.289)	68.367 (11.910)	70.916 (11.731)	73.805 (10.176)	72.905 (9.520)	77.749 (8.457)	78.444 (9.283)	75.964 (8.333)	72.103 (8.066)	70.963 (11.824)
NPL/GL	1.444 (0.558)	1.045 (0.407)	1.038 (0.468)	1.085 (0.461)	1.008 (0.643)	0.832 (0.553)	0.820 (0.445)	0.729 (0.448)	0.979 (0.613)	3.124 (1.449)	4.770 (1.637)	1.536 (1.453)
LLP/NL	0.313 (0.343)	0.420 (0.294)	0.537 (0.134)	0.540 (0.165)	0.567 (0.196)	0.458 (0.167)	0.401 (0.203)	0.356 (0.156)	0.457 (0.197)	0.727 (0.373)	1.053 (0.581)	0.534 (0.341)
Eq/TA	6.998 (2.035)	7.220 (2.390)	7.141 (2.244)	7.254 (2.300)	7.209 (2.280)	6.990 (2.349)	8.213 (2.177)	6.990 (2.355)	6.572 (2.290)	6.157 (2.167)	6.448 (2.275)	6.987 (2.307)
Dep/TL	77.889 (12.825)	77.994 (12.450)	78.301 (12.390)	79.294 (11.942)	79.214 (12.132)	78.248 (13.380)	60.243 (17.010)	73.512 (16.824)	73.193 (17.944)	73.072 (16.585)	63.983 (18.058)	74.154 (16.015)
DepGR	-4.994 (8.816)	7.257 (10.238)	6.852 (5.227)	32.545 (11.516)	32.822 (7.732)	21.877 (8.295)	-2.438 (8.477)	33.223 (17.150)	28.460 (18.213)	2.350 (16.388)	5.823 (14.042)	15.903 (18.906)
CIR	60.948 (9.267)	61.504 (11.446)	60.119 (10.123)	60.815 (10.290)	58.449 (9.067)	58.490 (9.159)	57.727 (8.553)	55.560 (11.446)	51.839 (11.236)	55.260 (12.843)	52.453 (10.590)	57.337 (10.952)
Size	6.722 (0.528)	6.705 (0.499)	6.727 (0.551)	6.831 (0.566)	6.923 (0.570)	7.012 (0.589)	7.171 (0.603)	7.103 (0.627)	7.210 (0.623)	7.236 (0.633)	7.384 (0.635)	7.014 (0.625)
HHIRD	0.276 (0.065)	0.266 (0.070)	0.243 (0.060)	0.261 (0.060)	0.293 (0.075)	0.308 (0.062)	0.377 (0.056)	0.311 (0.069)	0.241 (0.076)	0.202 (0.082)	0.268 (0.081)	0.275 (0.082)
HHIIC	441	581	551	513	506	482	487	441	459	497	507	496.302 (40.524)
GDP	4.700	5.000	3.600	2.700	3.100	3.300	3.600	4.000	3.600	0.900	-3.600	2.777 (2.235)
Inflation	2.900	4.000	2.700	4.000	2.600	3.200	3.700	2.700	4.200	1.400	0.800	2.914 (1.042)
Interest	3.000	4.750	3.250	2.750	2.000	2.000	2.250	3.500	4.000	2.500	1.000	2.840 (0.993)

Table 5 reports the empirical estimations of Eq. (1) for both measures of bank profitability (ROA and ROE) in Spain during the 1999-2009 period, using the system-GMM estimator suggested by Arellano and Bover (1995) and Blundell and Bond (1998).<sup>21</sup> The estimator ensures efficiency and consistency provided that the residuals do not show serial correlation of order two (AB tests for AR (2) with high  $p$ -values) and that the instruments used are valid (Sargan tests with  $p$ -value = 1). The high statistical significances of the lagged profitability variables also confirm the dynamic character of the model specification. The values of  $\delta$  are close to 0.40, which indicates a moderate persistence in bank profitability similar to that found by previous studies in the European banking sector (e.g., Athanasoglou et al., 2008).

With respect to the first of the hypotheses to be tested in our study, namely that concerning the effect of the composition of the bank's assets on profitability, the positive and highly significant coefficient of the loans-to-total-assets ratio confirms our expectations; that is, the larger the bank's loan portfolio is on its balance sheet, the higher is its profitability measured both by ROA and by ROE. This finding for the Spanish banking system is consistent with that reported in the previous literature for banks in Europe and in the US.

We also find a direct and significant relationship between bank profitability and loan quality measured through either the doubtful assets ratio or the loan loss provisions ratio. The latter appears to be a very important determinant of bank profitability for Spanish banks as it declined significantly after the eruption of the financial crisis—and subsequent economic crisis—in late 2007.<sup>22</sup> Because it appears that a greater level of risk does not translate into higher income, the Spanish banking system in general may not be setting prices according to the assumed credit risk, contrary to the proposal of the new banking regulation.

The effect of the bank capital on profitability is different depending on whether we consider the profitability of assets or of equity. In the first case, when ROA is considered as the dependent variable, the effect is positive and highly significant, as we expected. There appears to be consensus in the previous literature that more capital (and, therefore, better solvency) reduces the costs of external debt, compensating for the higher costs of own funds. On the other hand, the negative effect of banks' capital on the ROE is explained if we take into account that ROE can be broken down as the product of the ROA and the inverse of the ratio of equity-to-total-

---

<sup>21</sup> We obtain similar results for the bank-specific variables' coefficients when using time dummies instead of macroeconomic controls. We do not present here for space reasons.

<sup>22</sup> This reduction in profitability could be even greater were it not for the Spanish dynamic provisions, which have dampened the impact of non-performing loans on bank profits, particularly in the initial stages of the economic crisis. This finding does not mean that banks delayed recognition of bad debts in results but rather the contrary; in the cyclical upturn, when defaults were low, the risks accumulated in balance sheets were recognized by reducing profits through the recording of provisions (that can be used now that the downturn has arrived).

assets, i.e.,  $ROE = ROA \times 1/(Eq/TA)$ . In consequence, the decreases of the ROE resulting from increases in this ratio cannot be interpreted as decreases in the wealth created using the capital invested; rather, they can be seen as a consequence of the decreased level of indebtedness or leverage of the banks.

**Table 5.** Determinants of bank profitability in Spain.

This table reports the determinants of the profitability of Spanish banks during 1999-2009 using the system-GMM estimator developed by Arellano and Bover (1995) and Blundell and Bond (1998). The sample comprises 89 banks (697 observations). *ROA* is the pre-tax return on average assets. *ROE* is the pre-tax return on average equity. See Table 3 for a description of the rest of the variables. Except for *HHIC*, *GPD*, *Inflation* and *Interest*, all variables are considered as endogenous in our model. We report heteroskedasticity-consistent asymptotic standard errors in parentheses, and significance levels are indicated as follows: \*\*\*= significant at the 1% level; \*\*= significant at the 5% level; \*= significant at the 10% level.  $z_1$  and  $z_2$  are Wald tests of the joint significance of the reported coefficients and of the bank type dummies, respectively, asymptotically distributed as  $\chi^2$  under the null of no significance, degrees of freedom in parentheses.  $m_i$  is a serial correlation test of order  $i$  using residuals in first differences, asymptotically distributed as  $N(0,1)$  under the null of no serial correlation. Hansen is a test of the over-identifying restrictions, asymptotically distributed as  $\chi^2$  under the null of no correlation between the instruments and the error term, degrees of freedom in parentheses.

Variables	Model 1	
	ROA	ROE
Dep. Var. <sub>t-1</sub>	0.455*** (0.085)	0.398*** (0.070)
Loan/TA	0.005*** (0.002)	0.033*** (0.007)
NPL/GL	-0.041** (0.017)	-0.913*** (0.266)
LLP/NL	-0.120*** (0.038)	-0.743** (0.358)
Eq/TA	0.030*** (0.011)	-0.762*** (0.136)
Dep/TL	0.002** (0.001)	0.036** (0.018)
DepGR	0.000 (0.001)	0.011 (0.013)
CIR	-0.016*** (0.003)	-0.260*** (0.043)
Size	-0.032 (0.037)	-0.028 (0.713)
HHIRD	0.134 (0.229)	3.235 (4.632)
HHIC	0.003*** (0.001)	0.032*** (0.008)
GDP	0.049*** (0.013)	0.604*** (0.207)
Inflation	0.058*** (0.016)	0.458 (0.279)
Interest	-0.088*** (0.022)	-0.590* (0.345)
Commercial Bank	0.016** (0.007)	0.177 (0.118)
Savings Bank	0.006 (0.006)	-0.033 (0.106)
Constant	-0.542 (0.578)	5.907 (9.487)
$z_1$	955.42 (14)	652.72 (14)
$z_2$	5.78 (2)	10.77 (2)
$m_1$	-2.04	-3.05
$m_2$	1.01	-0.02
Hansen	75.95 (272)	71.59 (272)



The liabilities of the Spanish banks are characterized by a high proportion of customer deposits, as we saw earlier, which appears to have a positive effect on their profitability, measured both by ROA and by ROE. This characterization is demonstrated by the positive and statistically significant coefficient of the ratio of customer deposits to total liabilities. Therefore, the increase of Spanish banks resorting to the medium and long term wholesale markets in recent years involves a greater cost than if the financing had taken place more over the short term; however it has given them greater flexibility in their capital structure. On the other hand, the so-called “deposit war” would not harm the banks' profitability, possibly because the temporary increase in the cost of the liabilities (in many cases these deposits offer high returns for only a few months) could be compensated by the income derived from the other services provided or by the lower financial costs of maintaining these deposits once this short initial period of time ends.

The negative sign of the CIR variable in the equations of the ROA and ROE and its high statistical significance confirm our Hypothesis 5 referring to the effect of efficiency on bank profitability; i.e., improvements in efficiency are translated into improvements in profitability. Therefore, the decrease of this ratio in Spanish banks that we observe in Table 4 may contribute considerably to explaining part of their profitability. Moreover, given that, in the period analyzed, a process of intense geographic expansion took place in Spanish banks, with a consequent increase in the number of employees and new branch offices, this improvement in efficiency could be attributed to banks' demonstrating a notable capacity for effective management (the so-called X-efficiency).

In our study, we do not find the size of Spanish banks to be a determining factor of their profitability, although the model also does not indicate size to be a negative factor in their development. This result has important consequences in the current situation, where many commercial and savings banks are engaged in processes of growth involving mergers and acquisitions; however, these are likely to be undertaken with the aim of reinforcing solvency rather than increasing profitability. Likewise, we find no statistical significance in the variable that measures the effect of diversification of income (HHIRD) on bank profitability, which indicates that non-interest income activities do not affect bank profitability in Spain.

With regard to the set of exogenous variables, our results suggest a positive relationship between bank concentration and profitability in Spain (Hypothesis 8); i.e., a more concentrated banking system is associated with both a higher ROA and a higher ROE, as in other European countries (e.g., Claeys and Vander Venet, 2008; Maudos and de Guevara, 2004). This finding seems to support the structure-conduct-

performance hypothesis in the context of Spain; however, this profitability increase could also be an indirect consequence of greater efficiency of the banking system, as the efficient-structure hypothesis proposes. As expected, bank profitability is directly related to GDP growth, mainly through the effect that the economic cycle exerts on demand for credit by households and firms, and to provisions. Inflation affects bank profitability when this is defined in terms of ROA, implying that managers anticipate inflation expectations and adjust interest rates to achieve higher profits. Finally, contrary to expectations, bank profitability shows a negative correlation with the interest rate on the MRO of the ECB. This inverse relationship may be caused by a time lag to pass changes in interest rates on to customers in which changes take place more quickly on the funding side than on the lending side; therefore, bank net interest margins increase in the event of a fall in interest rates and decrease in the event of an upturn in rates.

#### *4.2. Are there differences between commercial and savings banks?*

We find statistical significance in the dummy that identifies commercial banks in our baseline equation, but only when profitability is defined in terms of ROA. The positive sign of the coefficient for this variable suggests that Spanish commercial banks have a higher return on assets than savings banks and credit cooperatives during the years considered. However, since we are interested in identifying qualitative rather than quantitative divergences in the performance of commercial and savings banks, we conduct a statistical test of mean differences on the bank-specific explanatory variables (see table 6).

First, we observe that the Spanish savings banks have higher percentages of both loans and customer deposits on their balance sheets. This difference can be explained in two ways. On one hand, Spanish customers tend to choose their bank according to geographic proximity; therefore, because the savings banks tend to concentrate their efforts in one particular region, they have a competitive advantage over the commercial banks. On the other hand, the savings banks face constraints in raising funds in financial markets; these limitations make them more dependent on traditional bank deposits, whereas commercial banks diversify the structure of liabilities of their balance sheets to a greater extent.<sup>23</sup> Both issues may help Spanish savings banks to increase their profitability in comparison to the commercial banks'. On the

---

<sup>23</sup> Savings banks are not limited companies, so they do not have equity capital in the strict sense. Despite this, as of 2004, the Spanish savings banks can issue non-voting equity units (the so-called *cuotas participativas*), which are considered own resources for the purposes of calculating the BIS capital ratio. These are securities similar to shares that do not grant voting rights to the holder, which limits their trading in the financial markets. Recently, the Royal Decree-Law 11/2010 of 9 July on governing bodies and other aspects of the legal regime for savings banks allows them to issue equity units with voting rights within certain limits.

negative side, the savings banks have poorer-quality loan portfolios —the shares of both non-performing loans and loan loss provisions are greater— as well as lower efficiency, as demonstrated by their CIR ratio, which is 4.5 percentage points higher than that of the commercial banks. Table 6 also reports that the savings banks have lower solvency (measured by the equity-to-total-assets ratio, as a rough proxy), although the difference in this variable does not reach statistical significance and remains above international standards. Lastly, although the savings banks are of statistically significantly smaller average size and have less income diversification than the commercial banks, both explanatory variables do not appear to play a determining role in bank profitability, as we saw in the previous section.

**Table 6.** Differences between savings and commercial banks in Spain.

This table reports the differences of the determinants of the profitability between savings and commercial banks in Spain during 1999-2009. See Table 3 for a description of the variables. *p*-values are calculated using the two-sample *t* test with unequal variances. We report standard errors in parentheses, and significance levels are indicated as follows: \*\*\*= significant at the 1% level; \*\*= significant at the 5% level; \*= significant at the 10% level.

Variables	Savings Banks	Commercial Banks	Difference
Loan/TA	72.032 (0.470)	63.450 (1.208)	8.582** (3.296)
NPL/GL	1.599 (0.075)	1.374 (0.110)	0.225* (0.143)
LLP/NL	0.538 (0.159)	0.442 (0.031)	0.096** (0.035)
Eq/TA	6.818 (0.106)	7.118 (0.198)	-0.300 (0.225)
Dep/TL	77.597 (0.626)	59.610 (1.207)	17.987*** (1.356)
DepGR	15.034 (0.946)	16.328 (1.457)	-1.249 (1.738)
CIR	58.308 (0.432)	53.846 (1.197)	4.462*** (1.273)
Size	7.042 (0.026)	7.231 (0.057)	-0.189*** (0.062)
HHIRD	0.257 (0.004)	0.325 (0.006)	-0.068*** (0.007)
Observations	422	174	

#### 4.3. Robustness checks

To further confirm the aforementioned findings, we conduct a number of robustness checks and report all of these results in Table 7. First, we perform some robustness checks to evaluate the method of estimation used in the analysis. In model 2, we employ an ordinary least squares (OLS) regression to estimate our equation, which is used widely in early studies on bank profitability (e.g., Angbazo, 1997; Bourke, 1989; Molyneux and Thornton, 1992). The results obtained do not differ much from those found previously; most of the explanatory variables retain both their signs and their statistical significance. However, we observe certain differences in one of them:

the statistically significant negative sign of the variable that measures the effect of bank size might indicate the existence of diseconomies of scale in the Spanish market. We also estimate the explanatory equation by introducing fixed effects with the aim of capturing the influences of specific characteristics of each bank and each year using the within-group estimator (model 3).<sup>24</sup> Among others, Elsas et al. (2010), Hannan and Prager (2009) and Maudos and de Guevara (2004), use this technique. As we can see, most of the explanatory variables have the same sign and the same statistical significance as in model 1. Nevertheless, the index used to measure the effect of inflation on bank profitability loses its statistical significance.

Second, we re-estimate our baseline equation, changing some of the variables employed as regressors. We replace the ratio of loans to total assets with the ratio of liquid to total assets as a proxy to analyze the effect of the asset structure on bank profitability (model 4). This latter ratio was employed previously by authors such as Goddard et al. (2004), Iannotta et al. (2007) and Molyneux and Thornton (1992). Both the sign and the statistical significance are as expected. On the other hand, like Berger et al. (2010), in model 5 we employ the squared logarithm of bank assets to control for the potential non-linear relationship between size and profitability. This change does not result in any change in the variable's statistical significance. Finally, we use non-interest income as a percentage of total operating revenue instead of HHIRD as a proxy for the measurement of the revenue diversification of the banks (model 6). The result does not differ from that obtained previously. This result confirms that there is no relationship between income diversification and profitability for Spanish banks.<sup>25</sup>

---

<sup>24</sup> The appropriateness of using a model with fixed rather than random effects was tested by applying the Hausman test.

<sup>25</sup> We make several additional changes in the explanatory variables. We use the operating expenses as a percentage of average total assets and the capital adequacy ratio to control for bank efficiency and capitalization, respectively. We do not report these results for reasons of space limitations.

**Table 7. Robustness checks.**

This table reports the results of the robustness checks. The sample comprises 89 banks (697 observations). *ROA* is the pre-tax return on average assets. *ROE* is the pre-tax return on average equity. See Table 3 for a description of the rest of the variables. Model 2 is estimated using ordinary least squares (OLS) with robust standard errors clustered by bank (reported in parentheses). Model 3 uses fixed-effects (within) regression with robust standard errors clustered by bank (reported in parentheses). Model 4 considers *Liq/TA* (liquid assets as a percentage of total assets) in place of *Loan/TA* ratio. Model 5 include *Size*<sup>2</sup> (the square of log (assets)) in place of *Size*. Model 6 considers *NonII/TOR* (non-interest income as a percentage of total operating revenue) in place of *HHIRD*. The rest of the variables remain the same. We report heteroskedasticity-consistent asymptotic standard errors in parentheses. Significance levels are indicated as follows: \*\*\*= significant at the 1% level; \*\*= significant at the 5% level; \*= significant at the 10% level. *R*<sup>2</sup> is the proportion of variation in the dependent variable explained by the model. Hausman is a test which compares the fixed versus random effects, asymptotically distributed as  $\chi^2$  under the null hypothesis that the individual effects are uncorrelated with the other regressors in the model, degrees of freedom in parentheses. *z*<sub>1</sub> and *z*<sub>2</sub> are Wald tests of the joint significance of the reported coefficients and of the bank type dummies, respectively, asymptotically distributed as *F* (models 2 and 3) or  $\chi^2$  (models 4, 5, and 6) under the null of no significance, degrees of freedom in parentheses. *m*<sub>2</sub> is a serial correlation test of second order using residuals in first differences, asymptotically distributed as *N*(0,1) under the null of no serial correlation. Hansen is a test of the over-identifying restrictions, asymptotically distributed as  $\chi^2$  under the null of no correlation between the instruments and the error term, degrees of freedom in parentheses.

Variables	Model 2		Model 3		Model 4		Model 5		Model 6	
	ROA	ROE	ROA	ROE	ROA	ROE	ROA	ROE	ROA	ROE
Dep. Var. <sub>t-1</sub>					0.444*** (0.080)	0.401*** (0.072)	0.450*** (0.082)	0.405*** (0.069)	0.446*** (0.079)	0.392*** (0.070)
Loan/TA [Liq/TA]	0.005** (0.002)	0.083*** (0.026)	0.002** (0.001)	0.050** (0.027)	-0.004** (0.002)	-0.036*** (0.011)	0.005** (0.002)	0.027** (0.011)	0.006*** (0.002)	0.049** (0.023)
NPL/GL	0.014 (0.021)	-0.164 (0.228)	0.009 (0.015)	-0.205 (0.217)	-0.048** (0.020)	-0.862*** (0.302)	-0.037** (0.017)	-0.919*** (0.251)	-0.040** (0.020)	-0.927*** (0.269)
LLP/NL	-0.275*** (0.056)	-3.090*** (0.848)	-0.160*** (0.049)	-1.973** (0.799)	-0.158** (0.080)	-0.922 (1.392)	-0.112* (0.065)	-0.855 (1.138)	-0.111** (0.058)	-0.685 (1.027)
Eq/TA	0.061*** (0.014)	-1.011*** (0.132)	0.060*** (0.013)	-0.813*** (0.142)	0.029*** (0.009)	-0.690*** (0.122)	0.028*** (0.010)	-0.778*** (0.138)	0.031*** (0.012)	-0.716*** (0.132)
Dep/TL	0.003*** (0.001)	0.061** (0.024)	0.003** (0.001)	0.026 (0.018)	0.002** (0.001)	0.031* (0.015)	0.003** (0.001)	0.032* (0.016)	0.002** (0.001)	0.038** (0.016)
DepGR	-0.002 (0.001)	-0.026 (0.018)	-0.000 (0.001)	-0.007 (0.010)	0.000 (0.001)	0.014 (0.012)	0.000 (0.001)	0.012 (0.013)	0.000 (0.001)	0.013 (0.014)
CIR	-0.031*** (0.003)	-0.410*** (0.039)	-0.019*** (0.003)	-0.277*** (0.053)	-0.016*** (0.003)	-0.267*** (0.047)	-0.016*** (0.003)	-0.268*** (0.046)	-0.015*** (0.003)	-0.263*** (0.045)
Size [Size <sup>2</sup> ]	-0.129*** (0.044)	-0.927* (0.516)	-0.209 (0.184)	-4.638 (3.717)	-0.067 (0.045)	-0.177 (0.513)	-0.002 (0.002)	-0.008 (0.047)	-0.054 (0.039)	0.355 (0.589)
HHIRD [NonII/TOR]	-0.091 (0.247)	-1.535 (3.262)	0.399* (0.217)	2.473 (3.549)	0.075 (0.227)	2.983 (4.254)	0.188 (0.210)	3.746 (5.002)	0.002 (0.003)	0.030 (0.057)
HHIC	0.003*** (0.000)	0.026*** (0.005)	0.002** (0.001)	-0.001 (0.005)	0.003*** (0.000)	0.032*** (0.009)	0.003*** (0.000)	0.032*** (0.009)	0.003*** (0.001)	0.036*** (0.008)
GDP	0.129*** (0.014)	1.595*** (0.185)	0.055*** (0.014)	0.575*** (0.208)	0.044*** (0.013)	0.599*** (0.219)	0.051*** (0.011)	0.568** (0.224)	0.049*** (0.013)	0.629*** (0.217)
Inflation	0.029** (0.014)	0.507** (0.204)	0.014 (0.015)	0.296 (0.243)	0.057*** (0.018)	0.509* (0.273)	0.058*** (0.013)	0.468* (0.282)	0.056*** (0.016)	0.516* (0.267)
Interest	-0.115*** (0.022)	-1.433*** (0.296)	-0.023* (0.013)	-0.143 (0.268)	-0.089*** (0.022)	-0.634* (0.338)	-0.088*** (0.019)	-0.566 (0.377)	-0.084*** (0.021)	-0.677* (0.371)
Commercial Bank	0.348*** (0.092)	4.227*** (0.949)	-0.014 (0.013)	0.036 (0.164)	0.019** (0.006)	0.212* (0.114)	0.015** (0.006)	0.153 (0.108)	0.020** (0.009)	0.152 (0.114)
Savings Bank	0.139*** (0.048)	1.444** (0.641)	-0.035*** (0.010)	-0.499*** (0.132)	0.004 (0.005)	-0.031 (0.096)	0.004 (0.005)	-0.045 (0.093)	0.008 (0.007)	-0.042 (0.096)
Constant	1.326*** (0.497)	31.899*** (6.047)	2.784* (1.050)	67.768*** (14.589)	0.357 (0.343)	10.456 (6.990)	-0.626 (0.482)	7.045 (8.364)	-0.502 (0.537)	1.980 (8.603)
<i>R</i> <sup>2</sup>	0.705	0.596	0.597 (within)	0.516 (within)						
Hausman			88.91 (15)	77.73 (15)						
<i>z</i> <sub>1</sub>	40.76 (13, 97)	36.09 (13, 97)	16.68 (13, 584)	12.77 (13, 584)	937.18 (14)	745.94 (14)	922.29 (14)	784.75 (14)	762.11 (14)	573.38 (14)
<i>z</i> <sub>2</sub>	7.29 (2, 97)	9.98 (2, 97)	8.01 (2, 584)	11.77 (2, 584)	12.63 (2)	10.68 (2)	6.80 (2)	10.04 (2)	6.98 (2)	7.60 (2)
<i>m</i> <sub>2</sub>					1.02	-0.06	0.98	-0.03	1.02	-0.11
Hansen					67.68 (272)	76.16 (272)	68.20 (272)	70.67 (272)	69.40 (272)	72.56 (272)

## 5. Conclusions

This paper analyzes empirically the main factors driving the higher profitability of Spanish banks in the period of 1999-2009 using an unbalanced panel data of 697 observations. We also look for differences between commercial and saving banks that might explain why the latter seem to be experiencing greater difficulties after the eruption of the financial crisis in late 2007 and the subsequent economic crisis.

Spanish banks typically engage in retail-oriented activity, with an extensive office network and close contact with customers. Consequently, loans to and deposits from the customer base constitute a large part of Spanish banks' economic and financial structure, and funding from the wholesale market has relatively little weight in comparison with other European countries. Our study concludes that this characteristic enhances bank profitability, in terms of both ROA and ROE. The results also provide empirical evidence that a higher amount of poor-quality assets on the bank's balance sheet is significantly detrimental to its profitability; this finding is logical considering that doubtful customers usually cannot keep paying their debt and that loan loss provisions account for a significant part of profits. On the other hand, we find that better capitalized banks tend to be more profitable when ROA is taken as the measure of profitability. However, an increase in the equity-to-total-assets ratio reduces the ROE of the banks due to the fall in leverage. Consequently, the high level of capitalization of Spanish banks could favor their ROA to the detriment of their ROE. Efficiency also constitutes an important determinant of the profitability of Spanish banks. Our study does not confirm that the rate of growth of deposits is related to profitability, a finding that would lead us to reject the hypothesis of negative effects on the banks' profit and loss accounts of the so-called "deposit war". Furthermore, size and income diversification do not appear to be explanatory factors of banking profitability in Spain: no symptoms of either economies or diseconomies of scale or scope are evident. With regard to the exogenous variables, our results seem to confirm the structure-conduct-performance hypothesis in Spain, together with the importance of the economic cycle for the profitability of the banking system. The inflation rate and the interest rate also influence bank profitability; but while the first factor exerts the effect expected, the latter shows behavior different from that expected, probably because of temporary differences in applying variations in interest rates to customer deposits and loans.

Our study also reveals qualitative differences in the performance of commercial and savings banks in Spain. Thus, the higher proportions of both customer loans and deposits on savings banks' balance sheets increase their profitability, whereas the

lower quality of their loan portfolios and worse efficiency in comparison with the Spanish commercial banks are detrimental to savings banks' profitability.

Finally, several challenges face the Spanish banking system in the near future. First, the persistent economic crisis is likely to continue to reduce the industry's business volume and to affect borrowers' ability to repay their loans; this latter factor is forcing the banking sector to allocate a large amount of its gross margin to provisions—now that the buffer provided by dynamic provisioning is almost exhausted—with the aforementioned negative impact on bank profitability. Second, we cannot exclude further complications arising from turbulence in international wholesale capital markets, with the consequent increase in funding costs for banks. Lastly, the new liquidity standards set by Basel III could reduce bank profitability from traditional lending activities, whereas the higher capital requirements under the new banking regulation may have a positive effect on ROA (and a negative effect on ROE). Despite these potential problems, the Spanish banking system, which employs the traditional buy-and-hold banking model, exhibits features that should make management of the above issues easier. These include, among others, a strong presence in the retail business (more resistant to market fluctuations); a scant amount of fixed-rate and very long-dated asset-side operations, which facilitates passing through the increase in the cost of funding to assets; and efficiency ratios that are among the best in the world. In addition, the savings banks' restructuring process performed in 2010 may help absorb the excess capacity in the banking sector due to lower business volumes (mainly by reducing the numbers of branches and employees), while the reform of their legal regime may contribute to strengthening their capital ratios and improving their corporate governance.

## **Appendix 1: The Spanish savings banks' restructuring process**

In 2010, more than two years after the start of the international economic and financial crisis, the Spanish banking sector, and most especially savings banks, had a number of weaknesses: first, capacity in the sector had been attuned to a period of excessive growth marked by very high business volumes; thus, the fall in the demand for financial services highlighted excess capacity, which needed to be absorbed. Second, with significant differences from one bank to another, this growth was supported by the real estate and construction sector, and in many cases it was funded on the wholesale markets; consequently, the increase in bad debts and greater difficulties in gaining access to funding exerted pressure on institutions' income statements, making the generation of synergies vital. Finally, savings banks faced added difficulties in increasing their capital through means other than retaining profits, given the lack of attractiveness of their non-voting equity units.

The solution to the above-mentioned issues necessarily involved the restructuring of the banking system through integration processes, either through a merger or an institutional protection system (IPS), and because of this the number of savings banks decreased from 45 (in 2009) to just 17 at the end of 2010. This restructuring process was conducted mainly under the Fund for the Orderly Restructuring of the Banking Sector (FROB), created by the Royal Decree-Law 9/2009 of 26 June 2009. Under an IPS, also known as a 'virtual merger', each savings bank retains its own governing body, balance sheet, legal structure and brand. However, for the following reasons, mergers and IPSs are essentially the same as far as the relevant end effects are concerned: first, an IPS usually implies the creation of a central institution that defines the principal policies and strategies; second, a high degree of commitment between entities enables them to support each other in terms of solvency and liquidity; and, third, the participants share a high percentage of the profit from their activity.

In addition to this, the recent reform of legal regime governing Spanish savings banks (approved pursuant to Royal Decree-Law 11/2010 of 9 July 2010) allows them to carry out their activity using new business models. Among these alternatives is the conversion of the savings bank into a foundation that segregates financial activities from social and welfare-related activities, thereby assigning its business as a credit institution to a commercial bank in which it has a holding. The new legislation also allows assigning all financial business to a commercial bank controlled by the savings bank, holding at least 50% of its capital, and retaining savings bank status. Both options would enable them to better access to capital markets and may contribute to increasing the professionalism of their management and governing bodies.



## References

- Abreu, M., and V. Mendes, 2002. *Commercial Bank Interest Margins and Profitability: Evidence from EU Countries*. Porto Working Paper Series, CISEP, Portugal.
- Acharya, V.V., Hasan, I., Saunders, A., 2002. The effects of focus and diversification on bank risk and return: Evidence from individual bank loan portfolios. *New Jersey Institute of Technology*, Mimeo.
- Albertazzi, U., Gambacorta, L., 2009. Bank profitability and the business cycle. *Journal of Financial Stability* 5, 393–409.
- Alexiou, C., Sofoklis, V., 2009. Determinants of bank profitability: Evidence from the Greek banking sector. *Economic Annals* 182, 93-118.
- Angbazo, L., 1997. Commercial bank net interest margins, default risk, interest-rate risk, and off-balance sheet banking. *Journal of Banking and Finance* 21, 55–87.
- Arellano, M., Bond, S. R., 1991. Some tests of specification for panel data. Monte Carlo evidence and an application to employment equations. *Review of Economic Studies* 58, 277-297.
- Arellano, M., Bover, O., 1995. Another look at the instrumental-variable estimation of error-components models. *Journal of Econometric* 68, 29-52.
- Athanasoglou, P. P., Brissimis, S. N., Delis, M. D., 2008. Bank-specific, industry-specific and macroeconomic determinants of bank profitability. *Journal of International Financial Markets, Institutions and Money* 18, 121-136.
- Barros, C. P., Ferreira, C., Willians, J., 2007. Analysing the determinants of performance of best and worst European banks: A mixed logit approach. *Journal of Banking and Finance* 31, 2189–2203.
- Berger, A.N., 1995a. The profit–structure relationship in banking: tests of market-power and efficient-structure hypotheses. *Journal of Money, Credit, and Banking* 27, 404-431.
- Berger, A.N., 1995b. The relationship between capital and earnings in banking. *Journal of Money, Credit, and Banking* 27, 432–456.
- Berger, A. N., Hasan, I., Zhou, M., 2010. The effects of focus versus diversification on bank performance: Evidence from Chinese banks. *Journal of Banking and Finance* 34, 1417-1435.
- Berger, A. N., Humphrey, D. B., 1994. *Bank scale economies, mergers, concentration, and efficiency: The U.S. experience*. The Wharton Financial Institutions Center, Working Paper 94-25.
- Bikker, J.A., Hu, H., 2002. Cyclical patterns in profits, provisioning and lending of banks and procyclicality of the new Basel capital requirements. *BNL Quarterly Review* 221, 143–175.

- Blundell, R. W., Bond, S. R., 1998. Initial conditions and moment restrictions in dynamic panel data models. *Journal of Econometrics* 87, 115-143.
- Bourke, P., 1989. Concentration and other determinants of bank profitability in Europe, North America and Australia. *Journal of Banking and Finance* 13, 65–79.
- Calza, A., Gartner, C., Sousa, J., 2003. Modelling the demand for loans to the private sector in the euro area. *Applied Economics* 35, 107–117.
- Carbó Valverde, S., Rodríguez Fernández, F., 2007. The determinants of bank margins in European banking. *Journal of Banking and Finance* 31, 2043–2063.
- Cardone-Riportella, C., Samaniego-Medina, R., Trujillo-Ponce, A. 2010. What drives bank securitisation? The Spanish experience. *Journal of Banking and Finance* 34, 2639-2651.
- Claeys, S., Vander Venet, R., 2008. Determinants of bank interest margins in Central and Eastern Europe: A comparison with the West. *Economic Systems* 32, 197-216.
- Chiorazzo, V., Milani, C., Salvini, F., 2008. Income diversification and bank performance: Evidence from Italian banks. *Journal of Financial Services Research* 33, 181-203.
- DeLong, G. L., 2001. Stockholder gains from focusing versus diversifying bank mergers. *Journal of Financial Economics* 59, 221–252.
- DeYoung, R., Rice, T., 2004. Non interest income and financial performance at US commercial banks. *The Financial Review* 39, 101–127.
- Demirgüç-Kunt A., Huizinga, H. 1999. Determinants of commercial bank interest margins and profitability: Some international evidence. *World Bank Economic Review* 13, 379-408.
- Demirguc-Kunt, A., Huizinga, H., 2000. *Financial structure and bank profitability*. Policy Research Working Paper Series 2430. The World Bank.
- Dietrich, A., Wanzenried, G., 2011. Determinants of bank profitability before and during the crisis: Evidence from Switzerland. *Journal of International Financial Markets, Institutions and Money*, doi:10.1016/j.intfin.2010.11.002.
- Elsas, R., Hackethal, A., Holzhäuser, M., 2010. The anatomy of bank diversification *Journal of Banking and Finance* 34, 1274–1287.
- García-Herrero, A., Gavilá, S., Santabárbara, D., 2009. What explains the low profitability of Chinese banks? *Journal of Banking and Finance* 33, 2080-2092.
- Goddard, J., Molyneux, P., Wilson, J., 2004a. Dynamics of growth and profitability in banking. *Journal of Money, Credit and Banking* 36, 1069–1090.
- Goddard, J.A., Molyneux, P., Wilson, J., 2004b. The profitability of European banks: a cross-sectional and dynamic panel analysis. *The Manchester School* 72, 363–381.

- Hernando, I., Nieto, M. J., 2007. Is the Internet delivery channel changing banks' performance? The case of Spanish banks. *Journal of Banking and Finance* 31, 1083–1099.
- Iannotta, G.; Nocera, G., Sironi, A., 2007. Ownership structure, risk and performance in the European banking industry. *Journal of Banking and Finance* 31, 2127-2149.
- Kasman, A., Tunc, G., Vardar, G., Okan, B., 2010. Consolidation and commercial bank net interest margins: Evidence from the old and new European Union members and candidate countries. *Economic Modelling* 27, 648-655.
- Lepetit, L., Nys, E., Rous, P., Tarazi, A., 2008. The expansion of services in European banking: Implications for loan pricing and interest margins. *Journal of Banking and Finance* 32, 2325-2335.
- LLoyd-Williams, D. M., Molyneux, P., Thornton, J., 1994. Market structure and performance in Spanish banking. *Journal of Banking and Finance* 18, 433-443.
- Maudos, J., de Guevara, J.F., 2004. Factors explaining the interest margin in the banking sectors of the European Union. *Journal of Banking and Finance* 28, 2259-2281.
- Mercieca, S., Schaeck, K., Wolfe, S., 2007. Small European banks: Benefits from diversification? *Journal of Banking and Finance* 31, 1975-1998.
- Mester, L., 1996. A study of bank efficiency taking into account risk preferences. *Journal of Banking and Finance* 20, 1025-1045.
- Molyneux, P., Thornton, J., 1992. Determinants of European bank profitability: a note. *Journal of Banking and Finance* 16, 1173-1178.
- Morgan, D.P., Katherine S., 2003. *Geographic diversification in banking and its implication for bank portfolio choice and performance*. Working Paper, Federal Reserve Bank of New York, February.
- Pasiouras, F., Kosmidou, K., 2007. Factors influencing the profitability of domestic and foreign commercial banks in the European Union. *Research in International Business and Finance* 21, 222-237
- Perry, P., 1992. Do banks gain or lose from inflation? *Journal of Retail Banking* 14, 25-30.
- Revell, J., 1979. Inflation and financial institutions. *Financial Times*, London.
- Staikouras, C., Wood, G., 2003. *The determinants of bank profitability in Europe*. In: European Applied Business Research Conference Proceedings, Venice.
- Stiroh, K.J., 2004. Diversification in banking: Is noninterest income the answer? *Journal of Money, Credit, and Banking* 36, 853-882.
- Stiroh, K.J., Rumble, A., 2006. The dark side of diversification: The case of US financial holding companies. *Journal of Banking and Finance* 30, 2131-2161.

# FUNDACIÓN DE LAS CAJAS DE AHORROS

---

## DOCUMENTOS DE TRABAJO

### Últimos números publicados

- 159/2000 Participación privada en la construcción y explotación de carreteras de peaje  
Ginés de Rus, Manuel Romero y Lourdes Trujillo
- 160/2000 Errores y posibles soluciones en la aplicación del *Value at Risk*  
Mariano González Sánchez
- 161/2000 Tax neutrality on saving assets. The spanish case before and after the tax reform  
Cristina Ruza y de Paz-Curbera
- 162/2000 Private rates of return to human capital in Spain: new evidence  
F. Barceinas, J. Oliver-Alonso, J.L. Raymond y J.L. Roig-Sabaté
- 163/2000 El control interno del riesgo. Una propuesta de sistema de límites  
riesgo neutral  
Mariano González Sánchez
- 164/2001 La evolución de las políticas de gasto de las Administraciones Públicas en los años 90  
Alfonso Utrilla de la Hoz y Carmen Pérez Esparrells
- 165/2001 Bank cost efficiency and output specification  
Emili Tortosa-Ausina
- 166/2001 Recent trends in Spanish income distribution: A robust picture of falling income inequality  
Josep Oliver-Alonso, Xavier Ramos y José Luis Raymond-Bara
- 167/2001 Efectos redistributivos y sobre el bienestar social del tratamiento de las cargas familiares en  
el nuevo IRPF  
Nuria Badenes Plá, Julio López Laborda, Jorge Onrubia Fernández
- 168/2001 The Effects of Bank Debt on Financial Structure of Small and Medium Firms in some Euro-  
pean Countries  
Mónica Melle-Hernández
- 169/2001 La política de cohesión de la UE ampliada: la perspectiva de España  
Ismael Sanz Labrador
- 170/2002 Riesgo de liquidez de Mercado  
Mariano González Sánchez
- 171/2002 Los costes de administración para el afiliado en los sistemas de pensiones basados en cuentas  
de capitalización individual: medida y comparación internacional.  
José Enrique Devesa Carpio, Rosa Rodríguez Barrera, Carlos Vidal Meliá
- 172/2002 La encuesta continua de presupuestos familiares (1985-1996): descripción, representatividad  
y propuestas de metodología para la explotación de la información de los ingresos y el gasto.  
Llorenç Pou, Joaquín Alegre
- 173/2002 Modelos paramétricos y no paramétricos en problemas de concesión de tarjetas de crédito.  
Rosa Puertas, María Bonilla, Ignacio Olmeda

- 174/2002 Mercado único, comercio intra-industrial y costes de ajuste en las manufacturas españolas.  
José Vicente Blanes Cristóbal
- 175/2003 La Administración tributaria en España. Un análisis de la gestión a través de los ingresos y de los gastos.  
Juan de Dios Jiménez Aguilera, Pedro Enrique Barrilao González
- 176/2003 The Falling Share of Cash Payments in Spain.  
Santiago Carbó Valverde, Rafael López del Paso, David B. Humphrey  
Publicado en "Moneda y Crédito" nº 217, pags. 167-189.
- 177/2003 Effects of ATMs and Electronic Payments on Banking Costs: The Spanish Case.  
Santiago Carbó Valverde, Rafael López del Paso, David B. Humphrey
- 178/2003 Factors explaining the interest margin in the banking sectors of the European Union.  
Joaquín Maudos y Juan Fernández Guevara
- 179/2003 Los planes de stock options para directivos y consejeros y su valoración por el mercado de valores en España.  
Mónica Melle Hernández
- 180/2003 Ownership and Performance in Europe and US Banking – A comparison of Commercial, Co-operative & Savings Banks.  
Yener Altunbas, Santiago Carbó y Phil Molyneux
- 181/2003 The Euro effect on the integration of the European stock markets.  
Mónica Melle Hernández
- 182/2004 In search of complementarity in the innovation strategy: international R&D and external knowledge acquisition.  
Bruno Cassiman, Reinhilde Veugelers
- 183/2004 Fijación de precios en el sector público: una aplicación para el servicio municipal de suministro de agua.  
M<sup>a</sup> Ángeles García Valiñas
- 184/2004 Estimación de la economía sumergida en España: un modelo estructural de variables latentes.  
Ángel Alañón Pardo, Miguel Gómez de Antonio
- 185/2004 Causas políticas y consecuencias sociales de la corrupción.  
Joan Oriol Prats Cabrera
- 186/2004 Loan bankers' decisions and sensitivity to the audit report using the belief revision model.  
Andrés Guiral Contreras and José A. Gonzalo Angulo
- 187/2004 El modelo de Black, Derman y Toy en la práctica. Aplicación al mercado español.  
Marta Tolentino García-Abadillo y Antonio Díaz Pérez
- 188/2004 Does market competition make banks perform well?.  
Mónica Melle
- 189/2004 Efficiency differences among banks: external, technical, internal, and managerial  
Santiago Carbó Valverde, David B. Humphrey y Rafael López del Paso

- 190/2004 Una aproximación al análisis de los costes de la esquizofrenia en España: los modelos jerárquicos bayesianos  
F. J. Vázquez-Polo, M. A. Negrín, J. M. Cavasés, E. Sánchez y grupo RIRAG
- 191/2004 Environmental proactivity and business performance: an empirical analysis  
Javier González-Benito y Óscar González-Benito
- 192/2004 Economic risk to beneficiaries in notional defined contribution accounts (NDCs)  
Carlos Vidal-Meliá, Inmaculada Domínguez-Fabian y José Enrique Devesa-Carpio
- 193/2004 Sources of efficiency gains in port reform: non parametric malmquist decomposition tfp index for Mexico  
Antonio Estache, Beatriz Tovar de la Fé y Lourdes Trujillo
- 194/2004 Persistencia de resultados en los fondos de inversión españoles  
Alfredo Ciriaco Fernández y Rafael Santamaría Aquilué
- 195/2005 El modelo de revisión de creencias como aproximación psicológica a la formación del juicio del auditor sobre la gestión continuada  
Andrés Guiral Contreras y Francisco Esteso Sánchez
- 196/2005 La nueva financiación sanitaria en España: descentralización y prospectiva  
David Cantarero Prieto
- 197/2005 A cointegration analysis of the Long-Run supply response of Spanish agriculture to the common agricultural policy  
José A. Mendez, Ricardo Mora y Carlos San Juan
- 198/2005 ¿Refleja la estructura temporal de los tipos de interés del mercado español preferencia por la liquidez?  
Magdalena Massot Perelló y Juan M. Nave
- 199/2005 Análisis de impacto de los Fondos Estructurales Europeos recibidos por una economía regional: Un enfoque a través de Matrices de Contabilidad Social  
M. Carmen Lima y M. Alejandro Cardenete
- 200/2005 Does the development of non-cash payments affect monetary policy transmission?  
Santiago Carbó Valverde y Rafael López del Paso
- 201/2005 Firm and time varying technical and allocative efficiency: an application for port cargo handling firms  
Ana Rodríguez-Álvarez, Beatriz Tovar de la Fe y Lourdes Trujillo
- 202/2005 Contractual complexity in strategic alliances  
Jeffrey J. Reuer y Africa Ariño
- 203/2005 Factores determinantes de la evolución del empleo en las empresas adquiridas por opa  
Nuria Alcalde Fradejas y Inés Pérez-Soba Aguilar
- 204/2005 Nonlinear Forecasting in Economics: a comparison between Comprehension Approach versus Learning Approach. An Application to Spanish Time Series  
Elena Olmedo, Juan M. Valderas, Ricardo Gimeno and Lorenzo Escot

- 205/2005 Precio de la tierra con presión urbana: un modelo para España  
Esther Decimavilla, Carlos San Juan y Stefan Sperlich
- 206/2005 Interregional migration in Spain: a semiparametric analysis  
Adolfo Maza y José Villaverde
- 207/2005 Productivity growth in European banking  
Carmen Murillo-Melchor, José Manuel Pastor y Emili Tortosa-Ausina
- 208/2005 Explaining Bank Cost Efficiency in Europe: Environmental and Productivity Influences.  
Santiago Carbó Valverde, David B. Humphrey y Rafael López del Paso
- 209/2005 La elasticidad de sustitución intertemporal con preferencias no separables intratemporalmente: los casos de Alemania, España y Francia.  
Elena Márquez de la Cruz, Ana R. Martínez Cañete y Inés Pérez-Soba Aguilar
- 210/2005 Contribución de los efectos tamaño, book-to-market y momentum a la valoración de activos: el caso español.  
Begoña Font-Belaire y Alfredo Juan Grau-Grau
- 211/2005 Permanent income, convergence and inequality among countries  
José M. Pastor and Lorenzo Serrano
- 212/2005 The Latin Model of Welfare: Do 'Insertion Contracts' Reduce Long-Term Dependence?  
Luis Ayala and Magdalena Rodríguez
- 213/2005 The effect of geographic expansion on the productivity of Spanish savings banks  
Manuel Illueca, José M. Pastor and Emili Tortosa-Ausina
- 214/2005 Dynamic network interconnection under consumer switching costs  
Ángel Luis López Rodríguez
- 215/2005 La influencia del entorno socioeconómico en la realización de estudios universitarios: una aproximación al caso español en la década de los noventa  
Marta Rahona López
- 216/2005 The valuation of spanish ipos: efficiency analysis  
Susana Álvarez Otero
- 217/2005 On the generation of a regular multi-input multi-output technology using parametric output distance functions  
Sergio Perelman and Daniel Santin
- 218/2005 La gobernanza de los procesos parlamentarios: la organización industrial del congreso de los diputados en España  
Gonzalo Caballero Miguez
- 219/2005 Determinants of bank market structure: Efficiency and political economy variables  
Francisco González
- 220/2005 Agresividad de las órdenes introducidas en el mercado español: estrategias, determinantes y medidas de performance  
David Abad Díaz

- 221/2005 Tendencia post-anuncio de resultados contables: evidencia para el mercado español  
Carlos Forner Rodríguez, Joaquín Marhuenda Fructuoso y Sonia Sanabria García
- 222/2005 Human capital accumulation and geography: empirical evidence in the European Union  
Jesús López-Rodríguez, J. Andrés Faiña y Jose Lopez Rodríguez
- 223/2005 Auditors' Forecasting in Going Concern Decisions: Framing, Confidence and Information Processing  
Waymond Rodgers and Andrés Guiral
- 224/2005 The effect of Structural Fund spending on the Galician region: an assessment of the 1994-1999 and 2000-2006 Galician CSFs  
José Ramón Cancelo de la Torre, J. Andrés Faiña and Jesús López-Rodríguez
- 225/2005 The effects of ownership structure and board composition on the audit committee activity: Spanish evidence  
Carlos Fernández Méndez and Rubén Arrondo García
- 226/2005 Cross-country determinants of bank income smoothing by managing loan loss provisions  
Ana Rosa Fonseca and Francisco González
- 227/2005 Incumplimiento fiscal en el irpf (1993-2000): un análisis de sus factores determinantes  
Alejandro Estellér Moré
- 228/2005 Region versus Industry effects: volatility transmission  
Pilar Soriano Felipe and Francisco J. Climent Diranzo
- 229/2005 Concurrent Engineering: The Moderating Effect Of Uncertainty On New Product Development Success  
Daniel Vázquez-Bustelo and Sandra Valle
- 230/2005 On zero lower bound traps: a framework for the analysis of monetary policy in the 'age' of central banks  
Alfonso Palacio-Vera
- 231/2005 Reconciling Sustainability and Discounting in Cost Benefit Analysis: a methodological proposal  
M. Carmen Almansa Sáez and Javier Calatrava Requena
- 232/2005 Can The Excess Of Liquidity Affect The Effectiveness Of The European Monetary Policy?  
Santiago Carbó Valverde and Rafael López del Paso
- 233/2005 Inheritance Taxes In The Eu Fiscal Systems: The Present Situation And Future Perspectives.  
Miguel Angel Barberán Lahuerta
- 234/2006 Bank Ownership And Informativeness Of Earnings.  
Víctor M. González
- 235/2006 Developing A Predictive Method: A Comparative Study Of The Partial Least Squares Vs Maximum Likelihood Techniques.  
Waymond Rodgers, Paul Pavlou and Andres Guiral.
- 236/2006 Using Compromise Programming for Macroeconomic Policy Making in a General Equilibrium Framework: Theory and Application to the Spanish Economy.  
Francisco J. André, M. Alejandro Cardenete y Carlos Romero.



- 237/2006 Bank Market Power And Sme Financing Constraints.  
Santiago Carbó-Valverde, Francisco Rodríguez-Fernández y Gregory F. Udell.
- 238/2006 Trade Effects Of Monetary Agreements: Evidence For Oecd Countries.  
Salvador Gil-Pareja, Rafael Llorca-Vivero y José Antonio Martínez-Serrano.
- 239/2006 The Quality Of Institutions: A Genetic Programming Approach.  
Marcos Álvarez-Díaz y Gonzalo Caballero Miguez.
- 240/2006 La interacción entre el éxito competitivo y las condiciones del mercado doméstico como determinantes de la decisión de exportación en las Pymes.  
Francisco García Pérez.
- 241/2006 Una estimación de la depreciación del capital humano por sectores, por ocupación y en el tiempo.  
Inés P. Murillo.
- 242/2006 Consumption And Leisure Externalities, Economic Growth And Equilibrium Efficiency.  
Manuel A. Gómez.
- 243/2006 Measuring efficiency in education: an analysis of different approaches for incorporating non-discretionary inputs.  
Jose Manuel Cordero-Ferrera, Francisco Pedraja-Chaparro y Javier Salinas-Jiménez
- 244/2006 Did The European Exchange-Rate Mechanism Contribute To The Integration Of Peripheral Countries?.  
Salvador Gil-Pareja, Rafael Llorca-Vivero y José Antonio Martínez-Serrano
- 245/2006 Intergenerational Health Mobility: An Empirical Approach Based On The Echp.  
Marta Pascual and David Cantarero
- 246/2006 Measurement and analysis of the Spanish Stock Exchange using the Lyapunov exponent with digital technology.  
Salvador Rojí Ferrari and Ana Gonzalez Marcos
- 247/2006 Testing For Structural Breaks In Variance With additive Outliers And Measurement Errors.  
Paulo M.M. Rodrigues and Antonio Rubia
- 248/2006 The Cost Of Market Power In Banking: Social Welfare Loss Vs. Cost Inefficiency.  
Joaquín Maudos and Juan Fernández de Guevara
- 249/2006 Elasticidades de largo plazo de la demanda de vivienda: evidencia para España (1885-2000).  
Desiderio Romero Jordán, José Félix Sanz Sanz y César Pérez López
- 250/2006 Regional Income Disparities in Europe: What role for location?.  
Jesús López-Rodríguez and J. Andrés Faña
- 251/2006 Funciones abreviadas de bienestar social: Una forma sencilla de simultaneizar la medición de la eficiencia y la equidad de las políticas de gasto público.  
Nuria Badenes Plá y Daniel Santín González
- 252/2006 "The momentum effect in the Spanish stock market: Omitted risk factors or investor behaviour?".  
Luis Muga and Rafael Santamaría
- 253/2006 Dinámica de precios en el mercado español de gasolina: un equilibrio de colusión tácita.  
Jordi Perdiguero García

- 254/2006 Desigualdad regional en España: renta permanente versus renta corriente.  
José M. Pastor, Empar Pons y Lorenzo Serrano
- 255/2006 Environmental implications of organic food preferences: an application of the impure public goods model.  
Ana Maria Aldanondo-Ochoa y Carmen Almansa-Sáez
- 256/2006 Family tax credits versus family allowances when labour supply matters: Evidence for Spain.  
José Felix Sanz-Sanz, Desiderio Romero-Jordán y Santiago Álvarez-García
- 257/2006 La internacionalización de la empresa manufacturera española: efectos del capital humano genérico y específico.  
José López Rodríguez
- 258/2006 Evaluación de las migraciones interregionales en España, 1996-2004.  
María Martínez Torres
- 259/2006 Efficiency and market power in Spanish banking.  
Rolf Färe, Shawna Grosskopf y Emili Tortosa-Ausina.
- 260/2006 Asimetrías en volatilidad, beta y contagios entre las empresas grandes y pequeñas cotizadas en la bolsa española.  
Helena Chuliá y Hipòlit Torró.
- 261/2006 Birth Replacement Ratios: New Measures of Period Population Replacement.  
José Antonio Ortega.
- 262/2006 Accidentes de tráfico, víctimas mortales y consumo de alcohol.  
José M<sup>a</sup> Arranz y Ana I. Gil.
- 263/2006 Análisis de la Presencia de la Mujer en los Consejos de Administración de las Mil Mayores Empresas Españolas.  
Ruth Mateos de Cabo, Lorenzo Escot Mangas y Ricardo Gimeno Nogués.
- 264/2006 Crisis y Reforma del Pacto de Estabilidad y Crecimiento. Las Limitaciones de la Política Económica en Europa.  
Ignacio Álvarez Peralta.
- 265/2006 Have Child Tax Allowances Affected Family Size? A Microdata Study For Spain (1996-2000).  
Jaime Vallés-Giménez y Anabel Zárate-Marco.
- 266/2006 Health Human Capital And The Shift From Foraging To Farming.  
Paolo Rungo.
- 267/2006 Financiación Autonómica y Política de la Competencia: El Mercado de Gasolina en Canarias.  
Juan Luis Jiménez y Jordi Perdiguero.
- 268/2006 El cumplimiento del Protocolo de Kyoto para los hogares españoles: el papel de la imposición sobre la energía.  
Desiderio Romero-Jordán y José Félix Sanz-Sanz.
- 269/2006 Banking competition, financial dependence and economic growth  
Joaquín Maudos y Juan Fernández de Guevara
- 270/2006 Efficiency, subsidies and environmental adaptation of animal farming under CAP  
Werner Kleinhanß, Carmen Murillo, Carlos San Juan y Stefan Sperlich

- 271/2006 Interest Groups, Incentives to Cooperation and Decision-Making Process in the European Union  
A. Garcia-Lorenzo y Jesús López-Rodríguez
- 272/2006 Riesgo asimétrico y estrategias de momentum en el mercado de valores español  
Luis Muga y Rafael Santamaría
- 273/2006 Valoración de capital-riesgo en proyectos de base tecnológica e innovadora a través de la teoría de opciones reales  
Gracia Rubio Martín
- 274/2006 Capital stock and unemployment: searching for the missing link  
Ana Rosa Martínez-Cañete, Elena Márquez de la Cruz, Alfonso Palacio-Vera and Inés Pérez-Soba Aguilar
- 275/2006 Study of the influence of the voters' political culture on vote decision through the simulation of a political competition problem in Spain  
Sagrario Lantarón, Isabel Lillo, M<sup>a</sup> Dolores López and Javier Rodrigo
- 276/2006 Investment and growth in Europe during the Golden Age  
Antonio Cubel and M<sup>a</sup> Teresa Sanchis
- 277/2006 Efectos de vincular la pensión pública a la inversión en cantidad y calidad de hijos en un modelo de equilibrio general  
Robert Meneu Gaya
- 278/2006 El consumo y la valoración de activos  
Elena Márquez y Belén Nieto
- 279/2006 Economic growth and currency crisis: A real exchange rate entropic approach  
David Matesanz Gómez y Guillermo J. Ortega
- 280/2006 Three measures of returns to education: An illustration for the case of Spain  
María Arrazola y José de Hevia
- 281/2006 Composition of Firms versus Composition of Jobs  
Antoni Cunyat
- 282/2006 La vocación internacional de un holding tranviario belga: la Compagnie Mutuelle de Tramways, 1895-1918  
Alberte Martínez López
- 283/2006 Una visión panorámica de las entidades de crédito en España en la última década.  
Constantino García Ramos
- 284/2006 Foreign Capital and Business Strategies: a comparative analysis of urban transport in Madrid and Barcelona, 1871-1925  
Alberte Martínez López
- 285/2006 Los intereses belgas en la red ferroviaria catalana, 1890-1936  
Alberte Martínez López
- 286/2006 The Governance of Quality: The Case of the Agrifood Brand Names  
Marta Fernández Barcala, Manuel González-Díaz y Emmanuel Raynaud
- 287/2006 Modelling the role of health status in the transition out of malthusian equilibrium  
Paolo Rungo, Luis Currais and Berta Rivera
- 288/2006 Industrial Effects of Climate Change Policies through the EU Emissions Trading Scheme  
Xavier Labandeira and Miguel Rodríguez

- 289/2006 Globalisation and the Composition of Government Spending: An analysis for OECD countries  
Norman Gemmell, Richard Kneller and Ismael Sanz
- 290/2006 La producción de energía eléctrica en España: Análisis económico de la actividad tras la liberalización del Sector Eléctrico  
Fernando Hernández Martínez
- 291/2006 Further considerations on the link between adjustment costs and the productivity of R&D investment: evidence for Spain  
Desiderio Romero-Jordán, José Félix Sanz-Sanz and Inmaculada Álvarez-Ayuso
- 292/2006 Una teoría sobre la contribución de la función de compras al rendimiento empresarial  
Javier González Benito
- 293/2006 Agility drivers, enablers and outcomes: empirical test of an integrated agile manufacturing model  
Daniel Vázquez-Bustelo, Lucía Avella and Esteban Fernández
- 294/2006 Testing the parametric vs the semiparametric generalized mixed effects models  
María José Lombardía and Stefan Sperlich
- 295/2006 Nonlinear dynamics in energy futures  
Mariano Matilla-García
- 296/2006 Estimating Spatial Models By Generalized Maximum Entropy Or How To Get Rid Of W  
Esteban Fernández Vázquez, Matías Mayor Fernández and Jorge Rodríguez-Valez
- 297/2006 Optimización fiscal en las transmisiones lucrativas: análisis metodológico  
Félix Domínguez Barrero
- 298/2006 La situación actual de la banca online en España  
Francisco José Climent Diranzo y Alexandre Momparler Pechuán
- 299/2006 Estrategia competitiva y rendimiento del negocio: el papel mediador de la estrategia y las capacidades productivas  
Javier González Benito y Isabel Suárez González
- 300/2006 A Parametric Model to Estimate Risk in a Fixed Income Portfolio  
Pilar Abad and Sonia Benito
- 301/2007 Análisis Empírico de las Preferencias Sociales Respecto del Gasto en Obra Social de las Cajas de Ahorros  
Alejandro Esteller-Moré, Jonathan Jorba Jiménez y Albert Solé-Ollé
- 302/2007 Assessing the enlargement and deepening of regional trading blocs: The European Union case  
Salvador Gil-Pareja, Rafael Llorca-Vivero y José Antonio Martínez-Serrano
- 303/2007 ¿Es la Franquicia un Medio de Financiación?: Evidencia para el Caso Español  
Vanessa Solís Rodríguez y Manuel González Díaz
- 304/2007 On the Finite-Sample Biases in Nonparametric Testing for Variance Constancy  
Paulo M.M. Rodrigues and Antonio Rubia
- 305/2007 Spain is Different: Relative Wages 1989-98  
José Antonio Carrasco Gallego

- 306/2007 Poverty reduction and SAM multipliers: An evaluation of public policies in a regional framework  
Francisco Javier De Miguel-Vélez y Jesús Pérez-Mayo
- 307/2007 La Eficiencia en la Gestión del Riesgo de Crédito en las Cajas de Ahorro  
Marcelino Martínez Cabrera
- 308/2007 Optimal environmental policy in transport: unintended effects on consumers' generalized price  
M. Pilar Socorro and Ofelia Betancor
- 309/2007 Agricultural Productivity in the European Regions: Trends and Explanatory Factors  
Roberto Ezcurra, Belen Iraizoz, Pedro Pascual and Manuel Rapún
- 310/2007 Long-run Regional Population Divergence and Modern Economic Growth in Europe: a Case Study of Spain  
María Isabel Ayuda, Fernando Collantes and Vicente Pinilla
- 311/2007 Financial Information effects on the measurement of Commercial Banks' Efficiency  
Borja Amor, María T. Tascón and José L. Fanjul
- 312/2007 Neutralidad e incentivos de las inversiones financieras en el nuevo IRPF  
Félix Domínguez Barrero
- 313/2007 The Effects of Corporate Social Responsibility Perceptions on The Valuation of Common Stock  
Waymond Rodgers , Helen Choy and Andres Guiral-Contreras
- 314/2007 Country Creditor Rights, Information Sharing and Commercial Banks' Profitability Persistence across the world  
Borja Amor, María T. Tascón and José L. Fanjul
- 315/2007 ¿Es Relevante el Déficit Corriente en una Unión Monetaria? El Caso Español  
Javier Blanco González y Ignacio del Rosal Fernández
- 316/2007 The Impact of Credit Rating Announcements on Spanish Corporate Fixed Income Performance: Returns, Yields and Liquidity  
Pilar Abad, Antonio Díaz and M. Dolores Robles
- 317/2007 Indicadores de Lealtad al Establecimiento y Formato Comercial Basados en la Distribución del Presupuesto  
Cesar Augusto Bustos Reyes y Óscar González Benito
- 318/2007 Migrants and Market Potential in Spain over The XXth Century: A Test Of The New Economic Geography  
Daniel A. Tirado, Jordi Pons, Elisenda Paluzie and Javier Silvestre
- 319/2007 El Impacto del Coste de Oportunidad de la Actividad Emprendedora en la Intención de los Ciudadanos Europeos de Crear Empresas  
Luis Miguel Zapico Aldeano
- 320/2007 Los belgas y los ferrocarriles de vía estrecha en España, 1887-1936  
Alberte Martínez López
- 321/2007 Competición política bipartidista. Estudio geométrico del equilibrio en un caso ponderado  
Isabel Lillo, M<sup>a</sup> Dolores López y Javier Rodrigo
- 322/2007 Human resource management and environment management systems: an empirical study  
M<sup>a</sup> Concepción López Fernández, Ana M<sup>a</sup> Serrano Bedía and Gema García Piqueres

- 323/2007 Wood and industrialization. evidence and hypotheses from the case of Spain, 1860-1935.  
Iñaki Iriarte-Goñi and María Isabel Ayuda Bosque
- 324/2007 New evidence on long-run monetary neutrality.  
J. Cunado, L.A. Gil-Alana and F. Perez de Gracia
- 325/2007 Monetary policy and structural changes in the volatility of us interest rates.  
Juncal Cuñado, Javier Gomez Biscarri and Fernando Perez de Gracia
- 326/2007 The productivity effects of intrafirm diffusion.  
Lucio Fuentelsaz, Jaime Gómez and Sergio Palomas
- 327/2007 Unemployment duration, layoffs and competing risks.  
J.M. Arranz, C. García-Serrano and L. Toharia
- 328/2007 El grado de cobertura del gasto público en España respecto a la UE-15  
Nuria Rueda, Begoña Barruso, Carmen Calderón y M<sup>a</sup> del Mar Herrador
- 329/2007 The Impact of Direct Subsidies in Spain before and after the CAP'92 Reform  
Carmen Murillo, Carlos San Juan and Stefan Sperlich
- 330/2007 Determinants of post-privatisation performance of Spanish divested firms  
Laura Cabeza García and Silvia Gómez Ansón
- 331/2007 ¿Por qué deciden diversificar las empresas españolas? Razones oportunistas versus razones económicas  
Almudena Martínez Campillo
- 332/2007 Dynamical Hierarchical Tree in Currency Markets  
Juan Gabriel Brida, David Matesanz Gómez and Wiston Adrián Risso
- 333/2007 Los determinantes sociodemográficos del gasto sanitario. Análisis con microdatos individuales  
Ana María Angulo, Ramón Barberán, Pilar Egea y Jesús Mur
- 334/2007 Why do companies go private? The Spanish case  
Inés Pérez-Soba Aguilar
- 335/2007 The use of gis to study transport for disabled people  
Verónica Cañal Fernández
- 336/2007 The long run consequences of M&A: An empirical application  
Cristina Bernad, Lucio Fuentelsaz and Jaime Gómez
- 337/2007 Las clasificaciones de materias en economía: principios para el desarrollo de una nueva clasificación  
Valentín Edo Hernández
- 338/2007 Reforming Taxes and Improving Health: A Revenue-Neutral Tax Reform to Eliminate Medical and Pharmaceutical VAT  
Santiago Álvarez-García, Carlos Pestana Barros y Juan Prieto-Rodríguez
- 339/2007 Impacts of an iron and steel plant on residential property values  
Celia Bilbao-Terol
- 340/2007 Firm size and capital structure: Evidence using dynamic panel data  
Victor M. González and Francisco González

- 341/2007 ¿Cómo organizar una cadena hotelera? La elección de la forma de gobierno  
Marta Fernández Barcala y Manuel González Díaz
- 342/2007 Análisis de los efectos de la decisión de diversificar: un contraste del marco teórico “Agencia-  
Stewardship”  
Almudena Martínez Campillo y Roberto Fernández Gago
- 343/2007 Selecting portfolios given multiple eurostoxx-based uncertainty scenarios: a stochastic goal pro-  
gramming approach from fuzzy betas  
Enrique Ballester, Blanca Pérez-Gladish, Mar Arenas-Parra and Amelia Bilbao-Terol
- 344/2007 “El bienestar de los inmigrantes y los factores implicados en la decisión de emigrar”  
Anastasia Hernández Alemán y Carmelo J. León
- 345/2007 Governance Decisions in the R&D Process: An Integrative Framework Based on TCT and  
Knowledge View of The Firm.  
Andrea Martínez-Noya and Esteban García-Canal
- 346/2007 Diferencias salariales entre empresas públicas y privadas. El caso español  
Begoña Cueto y Nuria Sánchez- Sánchez
- 347/2007 Effects of Fiscal Treatments of Second Home Ownership on Renting Supply  
Celia Bilbao Terol and Juan Prieto Rodríguez
- 348/2007 Auditors’ ethical dilemmas in the going concern evaluation  
Andres Guiral, Waymond Rodgers, Emiliano Ruiz and Jose A. Gonzalo
- 349/2007 Convergencia en capital humano en España. Un análisis regional para el periodo 1970-2004  
Susana Morales Sequera y Carmen Pérez Esparrells
- 350/2007 Socially responsible investment: mutual funds portfolio selection using fuzzy multiobjective pro-  
gramming  
Blanca M<sup>a</sup> Pérez-Gladish, Mar Arenas-Parra , Amelia Bilbao-Terol and M<sup>a</sup> Victoria Rodríguez-  
Uría
- 351/2007 Persistencia del resultado contable y sus componentes: implicaciones de la medida de ajustes por  
devengo  
Raúl Iñiguez Sánchez y Francisco Poveda Fuentes
- 352/2007 Wage Inequality and Globalisation: What can we Learn from the Past? A General Equilibrium  
Approach  
Concha Betrán, Javier Ferri and Maria A. Pons
- 353/2007 Eficacia de los incentivos fiscales a la inversión en I+D en España en los años noventa  
Desiderio Romero Jordán y José Félix Sanz Sanz
- 354/2007 Convergencia regional en renta y bienestar en España  
Robert Meneu Gaya
- 355/2007 Tributación ambiental: Estado de la Cuestión y Experiencia en España  
Ana Carrera Poncela
- 356/2007 Salient features of dependence in daily us stock market indices  
Luis A. Gil-Alana, Juncal Cuñado and Fernando Pérez de Gracia
- 357/2007 La educación superior: ¿un gasto o una inversión rentable para el sector público?  
Inés P. Murillo y Francisco Pedraja

- 358/2007 Effects of a reduction of working hours on a model with job creation and job destruction  
Emilio Domínguez, Miren Ullibarri y Idoya Zabaleta
- 359/2007 Stock split size, signaling and earnings management: Evidence from the Spanish market  
José Yagüe, J. Carlos Gómez-Sala and Francisco Poveda-Fuentes
- 360/2007 Modelización de las expectativas y estrategias de inversión en mercados de derivados  
Begoña Font-Belaire
- 361/2008 Trade in capital goods during the golden age, 1953-1973  
M<sup>a</sup> Teresa Sanchis and Antonio Cubel
- 362/2008 El capital económico por riesgo operacional: una aplicación del modelo de distribución de pérdidas  
Enrique José Jiménez Rodríguez y José Manuel Fera Domínguez
- 363/2008 The drivers of effectiveness in competition policy  
Joan-Ramon Borrell and Juan-Luis Jiménez
- 364/2008 Corporate governance structure and board of directors remuneration policies: evidence from Spain  
Carlos Fernández Méndez, Rubén Arrondo García and Enrique Fernández Rodríguez
- 365/2008 Beyond the disciplinary role of governance: how boards and donors add value to Spanish foundations  
Pablo De Andrés Alonso, Valentín Azofra Palenzuela y M. Elena Romero Merino
- 366/2008 Complejidad y perfeccionamiento contractual para la contención del oportunismo en los acuerdos de franquicia  
Vanessa Solís Rodríguez y Manuel González Díaz
- 367/2008 Inestabilidad y convergencia entre las regiones europeas  
Jesús Mur, Fernando López y Ana Angulo
- 368/2008 Análisis espacial del cierre de explotaciones agrarias  
Ana Aldanondo Ochoa, Carmen Almansa Sáez y Valero Casanovas Oliva
- 369/2008 Cross-Country Efficiency Comparison between Italian and Spanish Public Universities in the period 2000-2005  
Tommaso Agasisti and Carmen Pérez Esparrells
- 370/2008 El desarrollo de la sociedad de la información en España: un análisis por comunidades autónomas  
María Concepción García Jiménez y José Luis Gómez Barroso
- 371/2008 El medioambiente y los objetivos de fabricación: un análisis de los modelos estratégicos para su consecución  
Lucía Avella Camarero, Esteban Fernández Sánchez y Daniel Vázquez-Bustelo
- 372/2008 Influence of bank concentration and institutions on capital structure: New international evidence  
Víctor M. González and Francisco González
- 373/2008 Generalización del concepto de equilibrio en juegos de competición política  
M<sup>a</sup> Dolores López González y Javier Rodrigo Hitos
- 374/2008 Smooth Transition from Fixed Effects to Mixed Effects Models in Multi-level regression Models  
María José Lombardía and Stefan Sperlich



- 375/2008 A Revenue-Neutral Tax Reform to Increase Demand for Public Transport Services  
Carlos Pestana Barros and Juan Prieto-Rodríguez
- 376/2008 Measurement of intra-distribution dynamics: An application of different approaches to the European regions  
Adolfo Maza, María Hierro and José Villaverde
- 377/2008 Migración interna de extranjeros y ¿nueva fase en la convergencia?  
María Hierro y Adolfo Maza
- 378/2008 Efectos de la Reforma del Sector Eléctrico: Modelización Teórica y Experiencia Internacional  
Ciro Eduardo Bazán Navarro
- 379/2008 A Non-Parametric Independence Test Using Permutation Entropy  
Mariano Matilla-García and Manuel Ruiz Marín
- 380/2008 Testing for the General Fractional Unit Root Hypothesis in the Time Domain  
Uwe Hassler, Paulo M.M. Rodrigues and Antonio Rubia
- 381/2008 Multivariate gram-charlier densities  
Esther B. Del Brio, Trino-Manuel Níguez and Javier Perote
- 382/2008 Analyzing Semiparametrically the Trends in the Gender Pay Gap - The Example of Spain  
Ignacio Moral-Arce, Stefan Sperlich, Ana I. Fernández-Saínz and Maria J. Roca
- 383/2008 A Cost-Benefit Analysis of a Two-Sided Card Market  
Santiago Carbó Valverde, David B. Humphrey, José Manuel Liñares Zegarra and Francisco Rodríguez Fernandez
- 384/2008 A Fuzzy Bicriteria Approach for Journal Deselection in a Hospital Library  
M. L. López-Avello, M. V. Rodríguez-Uría, B. Pérez-Gladish, A. Bilbao-Terol, M. Arenas-Parra
- 385/2008 Valoración de las grandes corporaciones farmacéuticas, a través del análisis de sus principales intangibles, con el método de opciones reales  
Gracia Rubio Martín y Prosper Lamothe Fernández
- 386/2008 El marketing interno como impulsor de las habilidades comerciales de las pyme españolas: efectos en los resultados empresariales  
M<sup>a</sup> Leticia Santos Vijande, M<sup>a</sup> José Sanzo Pérez, Nuria García Rodríguez y Juan A. Trespalacios Gutiérrez
- 387/2008 Understanding Warrants Pricing: A case study of the financial market in Spain  
David Abad y Belén Nieto
- 388/2008 Aglomeración espacial, Potencial de Mercado y Geografía Económica: Una revisión de la literatura  
Jesús López-Rodríguez y J. Andrés Faíña
- 389/2008 An empirical assessment of the impact of switching costs and first mover advantages on firm performance  
Jaime Gómez, Juan Pablo Maícas
- 390/2008 Tender offers in Spain: testing the wave  
Ana R. Martínez-Cañete y Inés Pérez-Soba Aguilar

- 391/2008 La integración del mercado español a finales del siglo XIX: los precios del trigo entre 1891 y 1905  
Mariano Matilla García, Pedro Pérez Pascual y Basilio Sanz Carnero
- 392/2008 Cuando el tamaño importa: estudio sobre la influencia de los sujetos políticos en la balanza de bienes y servicios  
Alfonso Echazarra de Gregorio
- 393/2008 Una visión cooperativa de las medidas ante el posible daño ambiental de la desalación  
Borja Montaña Sanz
- 394/2008 Efectos externos del endeudamiento sobre la calificación crediticia de las Comunidades Autónomas  
Andrés Leal Marcos y Julio López Laborda
- 395/2008 Technical efficiency and productivity changes in Spanish airports: A parametric distance functions approach  
Beatriz Tovar & Roberto Rendeiro Martín-Cejas
- 396/2008 Network analysis of exchange data: Interdependence drives crisis contagion  
David Matesanz Gómez & Guillermo J. Ortega
- 397/2008 Explaining the performance of Spanish privatised firms: a panel data approach  
Laura Cabeza Garcia and Silvia Gomez Anson
- 398/2008 Technological capabilities and the decision to outsource R&D services  
Andrea Martínez-Noya and Esteban García-Canal
- 399/2008 Hybrid Risk Adjustment for Pharmaceutical Benefits  
Manuel García-Goñi, Pere Ibern & José María Inoriza
- 400/2008 The Team Consensus–Performance Relationship and the Moderating Role of Team Diversity  
José Henrique Dieguez, Javier González-Benito and Jesús Galende
- 401/2008 The institutional determinants of CO<sub>2</sub> emissions: A computational modelling approach using Artificial Neural Networks and Genetic Programming  
Marcos Álvarez-Díaz , Gonzalo Caballero Miguez and Mario Soliño
- 402/2008 Alternative Approaches to Include Exogenous Variables in DEA Measures: A Comparison Using Monte Carlo  
José Manuel Cordero-Ferrera, Francisco Pedraja-Chaparro and Daniel Santín-González
- 403/2008 Efecto diferencial del capital humano en el crecimiento económico andaluz entre 1985 y 2004: comparación con el resto de España  
M<sup>a</sup> del Pópulo Pablo-Romero Gil-Delgado y M<sup>a</sup> de la Palma Gómez-Calero Valdés
- 404/2008 Análisis de fusiones, variaciones conjeturales y la falacia del estimador en diferencias  
Juan Luis Jiménez y Jordi Perdiguero
- 405/2008 Política fiscal en la ue: ¿basta con los estabilizadores automáticos?  
Jorge Uxó González y M<sup>a</sup> Jesús Arroyo Fernández
- 406/2008 Papel de la orientación emprendedora y la orientación al mercado en el éxito de las empresas  
Óscar González-Benito, Javier González-Benito y Pablo A. Muñoz-Gallego
- 407/2008 La presión fiscal por impuesto sobre sociedades en la unión europea  
Elena Fernández Rodríguez, Antonio Martínez Arias y Santiago Álvarez García

- 408/2008 The environment as a determinant factor of the purchasing and supply strategy: an empirical analysis  
Dr. Javier González-Benito y MS Duilio Reis da Rocha
- 409/2008 Cooperation for innovation: the impact on innovatory effort  
Gloria Sánchez González and Liliana Herrera
- 410/2008 Spanish post-earnings announcement drift and behavioral finance models  
Carlos Forner and Sonia Sanabria
- 411/2008 Decision taking with external pressure: evidence on football manager dismissals in argentina and their consequences  
Ramón Flores, David Forrest and Juan de Dios Tena
- 412/2008 Comercio agrario latinoamericano, 1963-2000: aplicación de la ecuación gravitacional para flujos desagregados de comercio  
Raúl Serrano y Vicente Pinilla
- 413/2008 Voter heuristics in Spain: a descriptive approach elector decision  
José Luís Sáez Lozano and Antonio M. Jaime Castillo
- 414/2008 Análisis del efecto área de salud de residencia sobre la utilización y acceso a los servicios sanitarios en la Comunidad Autónoma Canaria  
Ignacio Abásolo Alessón, Lidia García Pérez, Raquel Aguiar Ibáñez y Asier Amador Robayna
- 415/2008 Impact on competitive balance from allowing foreign players in a sports league: an analytical model and an empirical test  
Ramón Flores, David Forrest & Juan de Dios Tena
- 416/2008 Organizational innovation and productivity growth: Assessing the impact of outsourcing on firm performance  
Alberto López
- 417/2008 Value Efficiency Analysis of Health Systems  
Eduardo González, Ana Cárcaba & Juan Ventura
- 418/2008 Equidad en la utilización de servicios sanitarios públicos por comunidades autónomas en España: un análisis multinivel  
Ignacio Abásolo, Jaime Pinilla, Miguel Negrín, Raquel Aguiar y Lidia García
- 419/2008 Piedras en el camino hacia Bolonia: efectos de la implantación del EEES sobre los resultados académicos  
Carmen Florido, Juan Luis Jiménez e Isabel Santana
- 420/2008 The welfare effects of the allocation of airlines to different terminals  
M. Pilar Socorro and Ofelia Betancor
- 421/2008 How bank capital buffers vary across countries. The influence of cost of deposits, market power and bank regulation  
Ana Rosa Fonseca and Francisco González
- 422/2008 Analysing health limitations in Spain: an empirical approach based on the European Community household panel  
Marta Pascual and David Cantarero

- 423/2008 Regional productivity variation and the impact of public capital stock: an analysis with spatial interaction, with reference to Spain  
Miguel Gómez-Antonio and Bernard Fingleton
- 424/2008 Average effect of training programs on the time needed to find a job. The case of the training schools program in the south of Spain (Seville, 1997-1999).  
José Manuel Cansino Muñoz-Repiso and Antonio Sánchez Braza
- 425/2008 Medición de la eficiencia y cambio en la productividad de las empresas distribuidoras de electricidad en Perú después de las reformas  
Raúl Pérez-Reyes y Beatriz Tovar
- 426/2008 Acercando posturas sobre el descuento ambiental: sondeo Delphi a expertos en el ámbito internacional  
Carmen Almansa Sáez y José Miguel Martínez Paz
- 427/2008 Determinants of abnormal liquidity after rating actions in the Corporate Debt Market  
Pilar Abad, Antonio Díaz and M. Dolores Robles
- 428/2008 Export led-growth and balance of payments constrained. New formalization applied to Cuban commercial regimes since 1960  
David Matesanz Gómez, Guadalupe Fugarolas Álvarez-Ude and Isis Mañalich Gálvez
- 429/2008 La deuda implícita y el desequilibrio financiero-actuarial de un sistema de pensiones. El caso del régimen general de la seguridad social en España  
José Enrique Devesa Carpio y Mar Devesa Carpio
- 430/2008 Efectos de la descentralización fiscal sobre el precio de los carburantes en España  
Desiderio Romero Jordán, Marta Jorge García-Inés y Santiago Álvarez García
- 431/2008 Euro, firm size and export behavior  
Silviano Esteve-Pérez, Salvador Gil-Pareja, Rafael Llorca-Vivero and José Antonio Martínez-Serrano
- 432/2008 Does social spending increase support for free trade in advanced democracies?  
Ismael Sanz, Ferran Martínez i Coma and Federico Steinberg
- 433/2008 Potencial de Mercado y Estructura Espacial de Salarios: El Caso de Colombia  
Jesús López-Rodríguez y Maria Cecilia Acevedo
- 434/2008 Persistence in Some Energy Futures Markets  
Juncal Cunado, Luis A. Gil-Alana and Fernando Pérez de Gracia
- 435/2008 La inserción financiera externa de la economía francesa: inversores institucionales y nueva gestión empresarial  
Ignacio Álvarez Peralta
- 436/2008 ¿Flexibilidad o rigidez salarial en España?: un análisis a escala regional  
Ignacio Moral Arce y Adolfo Maza Fernández
- 437/2009 Intangible relationship-specific investments and the performance of r&d outsourcing agreements  
Andrea Martínez-Noya, Esteban García-Canal & Mauro F. Guillén
- 438/2009 Friendly or Controlling Boards?  
Pablo de Andrés Alonso & Juan Antonio Rodríguez Sanz

- 439/2009 La sociedad Trenor y Cía. (1838-1926): un modelo de negocio industrial en la España del siglo XIX  
Amparo Ruiz Llopis
- 440/2009 Continental bias in trade  
Salvador Gil-Pareja, Rafael Llorca-Vivero & José Antonio Martínez Serrano
- 441/2009 Determining operational capital at risk: an empirical application to the retail banking  
Enrique José Jiménez-Rodríguez, José Manuel Fera-Domínguez & José Luis Martín-Marín
- 442/2009 Costes de mitigación y escenarios post-kyoto en España: un análisis de equilibrio general para España  
Mikel González Ruiz de Eguino
- 443/2009 Las revistas españolas de economía en las bibliotecas universitarias: ranking, valoración del indicador y del sistema  
Valentín Edo Hernández
- 444/2009 Convergencia económica en España y coordinación de políticas económicas. un estudio basado en la estructura productiva de las CC.AA.  
Ana Cristina Mingorance Arnáiz
- 445/2009 Instrumentos de mercado para reducir emisiones de co2: un análisis de equilibrio general para España  
Mikel González Ruiz de Eguino
- 446/2009 El comercio intra e inter-regional del sector Turismo en España  
Carlos Llano y Tamara de la Mata
- 447/2009 Efectos del incremento del precio del petróleo en la economía española: Análisis de cointegración y de la política monetaria mediante reglas de Taylor  
Fernando Hernández Martínez
- 448/2009 Bologna Process and Expenditure on Higher Education: A Convergence Analysis of the EU-15  
T. Agasisti, C. Pérez Esparrells, G. Catalano & S. Morales
- 449/2009 Global Economy Dynamics? Panel Data Approach to Spillover Effects  
Gregory Daco, Fernando Hernández Martínez & Li-Wu Hsu
- 450/2009 Pricing levered warrants with dilution using observable variables  
Isabel Abinzano & Javier F. Navas
- 451/2009 Information technologies and financial performance: The effect of technology diffusion among competitors  
Lucio Fuentelsaz, Jaime Gómez & Sergio Palomas
- 452/2009 A Detailed Comparison of Value at Risk in International Stock Exchanges  
Pilar Abad & Sonia Benito
- 453/2009 Understanding offshoring: has Spain been an offshoring location in the nineties?  
Belén González-Díaz & Rosario Gandoy
- 454/2009 Outsourcing decision, product innovation and the spatial dimension: Evidence from the Spanish footwear industry  
José Antonio Belso-Martínez

- 455/2009 Does playing several competitions influence a team's league performance? Evidence from Spanish professional football  
Andrés J. Picazo-Tadeo & Francisco González-Gómez
- 456/2009 Does accessibility affect retail prices and competition? An empirical application  
Juan Luis Jiménez and Jordi Perdiguero
- 457/2009 Cash conversion cycle in smes  
Sonia Baños-Caballero, Pedro J. García-Teruel and Pedro Martínez-Solano
- 458/2009 Un estudio sobre el perfil de hogares endeudados y sobreendeudados: el caso de los hogares vascos  
Alazne Mujika Alberdi, Iñaki García Arrizabalaga y Juan José Gibaja Martíns
- 459/2009 Imposing monotonicity on outputs in parametric distance function estimations: with an application to the spanish educational production  
Sergio Perelman and Daniel Santin
- 460/2009 Key issues when using tax data for concentration analysis: an application to the Spanish wealth tax  
José M<sup>a</sup> Durán-Cabré and Alejandro Esteller-Moré
- 461/2009 ¿Se está rompiendo el mercado español? Una aplicación del enfoque de feldstein –horioka  
Saúl De Vicente Queijeiro□, José Luis Pérez Rivero□ y María Rosalía Vicente Cuervo□
- 462/2009 Financial condition, cost efficiency and the quality of local public services  
Manuel A. Muñiz□ & José L. Zafra□□
- 463/2009 Including non-cognitive outputs in a multidimensional evaluation of education production: an international comparison  
Marián García Valiñas & Manuel Antonio Muñiz Pérez
- 464/2009 A political look into budget deficits.The role of minority governments and oppositions  
Albert Falcó-Gimeno & Ignacio Jurado
- 465/2009 La simulación del cuadro de mando integral. Una herramienta de aprendizaje en la materia de contabilidad de gestión  
Elena Urquía Grande, Clara Isabel Muñoz Colomina y Elisa Isabel Cano Montero
- 466/2009 Análisis histórico de la importancia de la industria de la desalinización en España  
Borja Montaña Sanz
- 467/2009 The dynamics of trade and innovation: a joint approach  
Silviano Esteve-Pérez & Diego Rodríguez
- 468/2009 Measuring international reference-cycles  
Sonia de Lucas Santos, Inmaculada Álvarez Ayuso & M<sup>a</sup> Jesús Delgado Rodríguez
- 469/2009 Measuring quality of life in Spanish municipalities  
Eduardo González Fidalgo, Ana Cárcaba García, Juan Ventura Victoria & Jesús García García
- 470/2009 ¿Cómo se valoran las acciones españolas: en el mercado de capitales doméstico o en el europeo?  
Begoña Font Belaire y Alfredo Juan Grau Grau
- 471/2009 Patterns of e-commerce adoption and intensity. evidence for the european union-27  
María Rosalía Vicente & Ana Jesús López

- 472/2009 On measuring the effect of demand uncertainty on costs: an application to port terminals  
Ana Rodríguez-Álvarez, Beatriz Tovar & Alan Wall
- 473/2009 Order of market entry, market and technological evolution and firm competitive performance  
Jaime Gomez, Gianvito Lanzolla & Juan Pablo Maicas
- 474/2009 La Unión Económica y Monetaria Europea en el proceso exportador de Castilla y León (1993-2007): un análisis de datos de panel  
Almudena Martínez Campillo y M<sup>a</sup> del Pilar Sierra Fernández
- 475/2009 Do process innovations boost SMEs productivity growth?  
Juan A. Mañez, María E. Rochina Barrachina, Amparo Sanchis Llopis & Juan A. Sanchis Llopis
- 476/2009 Incertidumbre externa y elección del modo de entrada en el marco de la inversión directa en el exterior  
Cristina López Duarte y Marta M<sup>a</sup> Vidal Suárez
- 477/2009 Testing for structural breaks in factor loadings: an application to international business cycle  
José Luis Cendejas Bueno, Sonia de Lucas Santos, Inmaculada Álvarez Ayuso & M<sup>a</sup> Jesús Delgado Rodríguez
- 478/2009 ¿Esconde la rigidez de precios la existencia de colusión? El caso del mercado de carburantes en las Islas Canarias  
Juan Luis Jiménez y Jordi Perdiguero
- 479/2009 The poni test with structural breaks  
Antonio Aznar & María-Isabel Ayuda
- 480/2009 Accuracy and reliability of Spanish regional accounts (CRE-95)  
Verónica Cañal Fernández
- 481/2009 Estimating regional variations of R&D effects on productivity growth by entropy econometrics  
Esteban Fernández-Vázquez y Fernando Rubiera-Morollón
- 482/2009 Why do local governments privatize the provision of water services? Empirical evidence from Spain  
Francisco González-Gómez, Andrés J. Picazo-Tadeo & Jorge Guardiola
- 483/2009 Assessing the regional digital divide across the European Union-27  
María Rosalía Vicente & Ana Jesús López
- 484/2009 Measuring educational efficiency and its determinants in Spain with parametric distance functions  
José Manuel Cordero Ferrera, Eva Crespo Cebada & Daniel Santín González
- 485/2009 Spatial analysis of public employment services in the Spanish provinces  
Patricia Suárez Cano & Matías Mayor Fernández
- 486/2009 Trade effects of continental and intercontinental preferential trade agreements  
Salvador Gil-Pareja, Rafael Llorca-Vivero & José Antonio Martínez-Serrano
- 487/2009 Testing the accuracy of DEA for measuring efficiency in education under endogeneity  
Salvador Gil-Pareja, Rafael Llorca-Vivero & José Antonio Martínez-Serrano
- 488/2009 Measuring efficiency in primary health care: the effect of exogenous variables on results  
José Manuel Cordero Ferrera, Eva Crespo Cebada & Luis R. Murillo Zamorano

- 489/2009 Capital structure determinants in growth firms accessing venture funding  
Marina Balboa, José Martí & Álvaro Tresierra
- 490/2009 Determinants of debt maturity structure across firm size  
Victor M. González
- 491/2009 Análisis del efecto de la aplicación de las NIIF en la valoración de las salidas a bolsa  
Susana Álvarez Otero y Eduardo Rodríguez Enríquez
- 492/2009 An analysis of urban size and territorial location effects on employment probabilities: the spanish case  
Ana Viñuela-Jiménez, Fernando Rubiera-Morollón & Begoña Cueto
- 493/2010 Determinantes de la estructura de los consejos de administración en España  
Isabel Acero Fraile□ y Nuria Alcalde Fradejas
- 494/2010 Performance and completeness in repeated inter-firm relationships: the case of franchising  
Vanessa Solis-Rodriguez & Manuel Gonzalez-Diaz
- 495/2010 A Revenue-Based Frontier Measure of Banking Competition  
Santiago Carbó, David Humphrey & Francisco Rodríguez
- 496/2010 Categorical segregation in social networks  
Antoni Rubí-Barceló
- 497/2010 Beneficios ambientales no comerciales de la directiva marco del agua en condiciones de escasez: análisis económico para el Guadalquivir  
Julia Martin-Ortega, Giacomo Giannoccaro y Julio Berbel Vecino
- 498/2010 Monetary integration and risk diversification in eu-15 sovereign debt markets  
Juncal Cuñado & Marta Gómez-Puig
- 499/2010 The Marshall Plan and the Spanish autarky: A welfare loss analysis  
José Antonio Carrasco Gallego
- 500/2010 The role of learning in firm R&D persistence  
Juan A. Mañez, María E. Rochina-Barrachina, Amparo Sanchis-Llopis & Juan A. Sanchis-Llopis
- 501/2010 Is venture capital more than just money?  
Marina Balboa, José Martí & Nina Zieling
- 502/2010 On the effects of supply strategy on business performance: do the relationships among generic competitive objectives matter?  
Javier González-Benito
- 503/2010 Corporate cash holding and firm value  
Cristina Martínez-Sola, Pedro J. García-Teruel & Pedro Martínez-Solano
- 504/2010 El impuesto de flujos de caja de sociedades: una propuesta de base imponible y su aproximación contable en España  
Lourdes Jerez Barroso y Joaquín Texeira Quirós
- 505/2010 The effect of technological, commercial and human resources on the use of new technology  
Jaime Gómez & Pilar Vargas



- 506/2010 ¿Cómo ha afectado la fiscalidad a la rentabilidad de la inversión en vivienda en España?  
Un análisis para el periodo 1996 y 2007  
Jorge Onrubia Fernández y María del Carmen Rodado Ruiz
- 507/2010 Modelización de flujos en el análisis input-output a partir de la teoría de redes  
Ana Salomé García Muñiz
- 508/2010 Export-led-growth hypothesis revisited. a balance of payments approach for Argentina, Brazil, Chile and Mexico  
David Matesanz Gómez & Guadalupe Fugarolas Álvarez-Ude
- 509/2010 Realised hedge ratio properties, performance and implications for risk management: evidence from the spanish ibex 35 spot and futures markets  
David G McMillan & Raquel Quiroga García
- 510/2010 Do we sack the manager... or is it better not to? Evidence from Spanish professional football  
Francisco González-Gómez, Andrés J. Picazo-Tadeo & Miguel Á. García-Rubio
- 511/2010 Have Spanish port sector reforms during the last two decades been successful? A cost frontier approach  
Ana Rodríguez-Álvarez & Beatriz Tovar
- 512/2010 Size & Regional Distribution of Financial Behavior Patterns in Spain  
Juan Antonio Maroto Acín, Pablo García Estévez & Salvador Roji Ferrari
- 513/2010 The impact of public reforms on the productivity of the Spanish ports: a parametric distance function approach  
Ramón Núñez-Sánchez & Pablo Coto-Millán
- 514/2010 Trade policy versus institutional trade barriers: an application using “good old” ols  
Laura Márquez-Ramos, Inmaculada Martínez-Zarzoso & Celestino Suárez-Burguet
- 515/2010 The “Double Market” approach in venture capital and private equity activity: the case of Europe  
Marina Balboa & José Martí
- 516/2010 International accounting differences and earnings smoothing in the banking industry  
Marina Balboa, Germán López-Espinosa & Antonio Rubia
- 517/2010 Convergence in car prices among European countries  
Simón Sosvilla-Rivero & Salvador Gil-Pareja
- 518/2010 Effects of process and product-oriented innovations on employee downsizing  
José David Vicente-Lorente & José Ángel Zúñiga-Vicente
- 519/2010 Inequality, the politics of redistribution and the tax-mix  
Jenny De Freitas
- 520/2010 Efectos del desajuste educativo sobre el rendimiento privado de la educación: un análisis para el caso español (1995-2006)  
Inés P. Murillo, Marta Rahona y M<sup>a</sup> del Mar Salinas
- 521/2010 Structural breaks and real convergence in opec countries  
Juncal Cuñado
- 522/2010 Human Capital, Geographical location and Policy Implications: The case of Romania  
Jesús López-Rodríguez□, Andres Faiña y Bolea Cosmin-Gabriel

- 523/2010 Organizational unlearning context fostering learning for customer capital through time: lessons from SMEs in the telecommunications industry  
Anthony K. P. Wensley, Antonio Leal-Millán, Gabriel Cepeda-Carrión & Juan Gabriel Cegarra-Navarro
- 524/2010 The governance threshold in international trade flows  
Marta Felis-Rota
- 525/2010 The intensive and extensive margins of trade decomposing exports growth differences across Spanish regions  
Asier Minondo Uribe-Etxebarria & Francisco Requena Silvente
- 526/2010 Why do firms locate r&d outsourcing agreements offshore? the role of ownership, location, and externalization advantages  
Andrea Martínez-Noya, Esteban García-Canal & Mauro f. Guillén
- 527/2010 Corporate Taxation and the Productivity and Investment Performance of Heterogeneous Firms: Evidence from OECD Firm-Level Data  
Norman Gemmell, Richard Kneller, Ismael Sanz & José Félix Sanz-Sanz
- 528/2010 Modelling Personal Income Taxation in Spain: Revenue Elasticities and Regional Comparisons  
John Creedy & José Félix Sanz-Sanz
- 529/2010 Mind the Remoteness!. Income disparities across Japanese Prefectures  
Jesús López-Rodríguez□, Daisuke Nakamura
- 530/2010 El nuevo sistema de financiación autonómica: descripción, estimación empírica y evaluación  
Antoni Zabalza y Julio López Laborda
- 531/2010 Markups, bargaining power and offshoring: an empirical assessment  
Lourdes Moreno & Diego Rodríguez
- 532/2010 The snp-dcc model: a new methodology for risk management and forecasting  
Esther B. Del Brio, Trino-Manuel Níguez & Javier Perote
- 533/2010 El uso del cuadro de mando integral y del presupuesto en la gestión estratégica de los hospitales públicos  
David Naranjo Gil
- 534/2010 Análisis de la efectividad de las prácticas de trabajo de alta implicación en las fábricas españolas  
Daniel Vázquez-Bustelo□□ y Lucía Avella Camarero
- 535/2010 Energía, innovación y transporte: la electrificación de los tranvías en España, 1896-1935  
Alberte Martínez López
- 536/2010 La ciudad como negocio: gas y empresa en una región española, Galicia 1850-1936  
Alberte Martínez López y Jesús Mirás Araujo
- 537/2010 To anticipate or not to anticipate? A comparative analysis of opportunistic early elections and incumbents' economic performance  
Pedro Riera Sagrera
- 538/2010 The impact of oil shocks on the Spanish economy  
Ana Gómez-Loscós, Antonio Montañés & María Dolores Gadea

- 539/2010 The efficiency of public and publicly-subsidized high schools in Spain. evidence from pisa-2006  
María Jesús Mancebón, Jorge Calero, Álvaro Choi & Domingo P. Ximénez-de-Embún
- 540/2010 Regulation as a way to force innovation: the biodiesel case  
Jordi Perdigueró & Juan Luis Jiménez
- 541/2010 Pricing strategies of Spanish network carrier  
Xavier Fageda, Juan Luis Jiménez & Jordi Perdigueró
- 542/2010 Papel del posicionamiento del distribuidor en la relación entre la marca de distribuidor y lealtad al establecimiento comercial  
Oscar González-Benito y Mercedes Martos-Partal
- 543/2010 How Bank Market Concentration, Regulation, and Institutions Shape the Real Effects of Banking Crises  
Ana I. Fernández, Francisco González & Nuria Suárez
- 544/2010 Una estimación del comercio interregional trimestral de bienes en España mediante técnicas de interpolación temporal  
Nuria Gallego López, Carlos Llano Verduras y Julián Pérez García
- 545/2010 Puerto, empresas y ciudad: una aproximación histórica al caso de Las Palmas de Gran Canaria  
Miguel Suárez, Juan Luis Jiménez y Daniel Castillo
- 546/2010 Multinationals in the motor vehicles industry: a general equilibrium analysis for a transition economy  
Concepción Latorre & Antonio G. Gómez-Plana
- 547/2010 Core/periphery scientific collaboration networks among very similar researchers  
Antoni Rubí-Barceló
- 548/2010 Basic R&D in vertical markets  
Miguel González-Maestre & Luis M. Granero
- 549/2010 Factores condicionantes de la presión fiscal de las entidades de crédito españolas, ¿existen diferencias entre bancos y cajas de ahorros?  
Ana Rosa Fonseca Díaz, Elena Fernández Rodríguez y Antonio Martínez Arias
- 550/2010 Analyzing an absorptive capacity: Unlearning context and Information System Capabilities as catalysts for innovativeness  
Gabriel Cepeda-Carrión, Juan Gabriel Cegarra-Navarro & Daniel Jimenez-Jimenez
- 551/2010 The resolution of banking crises and market discipline: international evidence  
Elena Cubillas, Ana Rosa Fonseca & Francisco González
- 552/2010 A strategic approach to network value in information markets  
Lucio Fuentelsaz, Elisabet Garrido & Juan Pablo Maicas
- 553/2010 Accounting for the time pattern of remittances in the Spanish context  
Alfonso Echazarra
- 554/2010 How to design franchise contracts: the role of contractual hazards and experience  
Vanesa Solis-Rodriguez & Manuel Gonzalez-Diaz

- 555/2010 Una teoría integradora de la función de producción al rendimiento empresarial  
Javier González Benito
- 556/2010 Height and economic development in Spain, 1850-1958  
Ramón María-Dolores & José Miguel Martínez-Carrión
- 557/2010 Why do entrepreneurs use franchising as a financial tool? An agency explanation  
Manuel González-Díaz & Vanesa Solís-Rodríguez
- 558/2010 Explanatory Factors of Urban Water Leakage Rates in Southern Spain  
Francisco González-Gómez, Roberto Martínez-Espiñeira, Maria A. García-Valiñas & Miguel Á. García Rubio
- 559/2010 Los rankings internacionales de las instituciones de educación superior y las clasificaciones universitarias en España: visión panorámica y prospectiva de futuro.  
Carmen Pérez-Esparrells y José M<sup>a</sup> Gómez-Sancho.
- 560/2010 Análisis de los determinantes de la transparencia fiscal: Evidencia empírica para los municipios catalanes  
Alejandro Esteller Moré y José Polo Otero
- 561/2010 Diversidad lingüística e inversión exterior: el papel de las barreras lingüísticas en los procesos de adquisición internacional  
Cristina López Duarte y Marta M<sup>a</sup> Vidal Suárez
- 562/2010 Costes y beneficios de la competencia fiscal en la Unión Europea y en la España de las autonomías  
José M<sup>a</sup> Cantos, Agustín García Rico, M<sup>a</sup> Gabriela Lagos Rodríguez y Raquel Álamo Cerrillo
- 563/2010 Customer base management and profitability in information technology industries  
Juan Pablo Maicas y Francisco Javier Sese
- 564/2010 Expansión internacional y distancia cultural: distintas aproximaciones —hofstede, schwartz, globe  
Cristina López Duarte y Marta M<sup>a</sup> Vidal Suárez
- 565/2010 Economies of scale and scope in service firms with demand uncertainty: An application to a Spanish port  
Beatriz Tovar & Alan Wall
- 566/2010 Fiscalidad y elección entre renta vitalicia y capital único por los inversores en planes de pensiones: el caso de España  
Félix Domínguez Barrero y Julio López Laborda
- 567/2010 Did the cooperative start life as a joint-stock company? Business law and cooperatives in Spain, 1869–1931  
Timothy W. Guinnan & Susana Martínez-Rodríguez
- 568/2010 Predicting bankruptcy using neural networks in the current financial crisis: a study for US commercial banks  
Félix J. López-Iturriaga, Óscar López-de-Foronda & Iván Pastor Sanz
- 569/2010 Financiación de los cuidados de larga duración en España  
Raúl del Pozo Rubio y Francisco Escribano Sotos

- 570/2010 Is the Border Effect an Artefact of Geographic Aggregation?  
Carlos Llano-Verduras, Asier Minondo-Urbe & Francisco Requena-Silvente
- 571/2010 Notes on using the hidden asset or the contribution asset to compile the actuarial balance for pay-as-you-go pension systems  
Carlos Vidal-Meliá & María del Carmen Boado-Penas
- 572/2010 The Real Effects of Banking Crises: Finance or Asset Allocation Effects? Some International Evidence  
Ana I. Fernández, Francisco González & Nuria Suárez Carlos
- 573/2010 Endogenous mergers of complements with mixed bundling  
Ricardo Flores-Fillol & Rafael Moner-Colonques
- 574/2010 Redistributive Conflicts and Preferences for Tax Schemes in Europe  
Antonio M. Jaime-Castillo & Jose L. Saez-Lozano
- 575/2010 Spanish emigration and the setting-up of a great company in Mexico: bimbo, 1903-2008  
Javier Moreno Lázaro
- 576/2010 Mantenimiento temporal de la equidad horizontal en el sistema de financiación autonómica  
Julio López Laborda y Antoni Zabalza
- 577/2010 Sobreeducación, Educación no formal y Salarios: Evidencia para España  
Sandra Nieto y Raúl Ramos
- 578/2010 Dependencia y empleo: un análisis empírico con la encuesta de discapacidades y atención a la dependencia (edad) 2008.  
David Cantarero-Prieto y Patricia Moreno-Mencía
- 579/2011 Environment and happiness: new evidence for Spain  
Juncal Cuñado & Fernando Pérez de Gracia
- 580/2011 Aanalysis of emerging barriers for e-learning models. a case of study  
Nuria Calvo & Paolo Rungo
- 581/2011 Unemployment, cycle and gender  
Amado Peiró, Jorge Belaire-Franch, & Maria Teresa Gonzalo
- 582/2011 An Analytical Regions Proposal for the Study of Labour Markets: An Evaluation for the Spanish Territory  
Ana Viñuela Jiménez & Fernando Rubiera Morollón
- 583/2011 The Efficiency of Performance-based-fee Funds  
Ana C. Díaz-Mendoza, Germán López-Espinosa & Miguel A. Martínez-Sedano
- 584/2011 Green and good?. The investment performance of US environmental mutual funds  
Francisco J. Climent-Diranzo & Pilar Soriano-Felipe
- 585/2011 El fracaso de Copenhague desde la teoría de juegos.  
Yolanda Fernández Fernández, M<sup>a</sup> Ángeles Fernández López y Blanca Olmedillas Blanco
- 586/2011 Tie me up, tie me down! the interplay of the unemployment compensation system, fixed-term contracts and rehiring  
José M. Arranz & Carlos García-Serrano

- 587/2011 Corporate social performance, innovation intensity and their impacts on financial performance: evidence from lending decisions  
Andrés Guiral
- 588/2011 Assessment of the programme of measures for coastal lagoon environmental restoration using cost-benefit analysis.  
José Miguel Martínez Paz & Ángel Perni Llorente
- 589/2011 Illicit drug use and labour force participation: a simultaneous equations approach  
Berta Rivera, Bruno Casal, Luis Currais & Paolo Rungo
- 590/2011 Influencia de la propiedad y el control en la puesta en práctica de la rsc en las grandes empresas españolas  
José-Luis Godos-Díez, Roberto Fernández-Gago y Laura Cabeza-García
- 591/2011 Ownership, incentives and hospitals  
Xavier Fageda & Eva Fiz
- 592/2011 La liberalización del ferrocarril de mercancías en europa: ¿éxito o fracaso?  
Daniel Albalade del Sol, Maria Lluïsa Sort García y Universitat de Barcelona
- 593/2011 Do nonreciprocal preference regimes increase exports?  
Salvador Gil-Pareja, Rafael Llorca-Vivero & José Antonio Martínez-Serrano
- 594/2011 Towards a dynamic analysis of multiple-store shopping: evidence from Spanish panel data  
Noemí Martínez-Caraballo, Manuel Salvador, Carmen Berné & Pilar Gargallo
- 595/2011 Base imponible y neutralidad del impuesto de sociedades: alternativas y experiencias  
Lourdes Jerez Barroso
- 596/2011 Cambio técnico y modelo de negocio: las compañías de transporte urbano en España, 1871-1989  
Alberte Martínez López
- 597/2011 A modified dickey-fuller procedure to test for stationarity  
Antonio Aznar, María-Isabel Ayuda
- 598/2011 Entorno institucional, estructura de propiedad e inversión en I+D: Un análisis internacional  
Félix J. López Iturriaga y Emilio J. López Millán
- 599/2011 Factores competitivos y oferta potencial del sector lechero en Navarra  
Valero L. Casanovas Oliva y Ana M. Aldanondo Ochoa
- 600/2011 Política aeroportuaria y su impacto sobre la calidad percibida de los aeropuertos  
Juan Luis Jiménez y Ancor Suárez
- 601/2011 Regímenes de tipo de cambio y crecimiento económico en países en desarrollo  
Elena Lasarte Navamuel y José Luis Pérez Rivero
- 602/2011 La supervivencia en las empresas de alta tecnología españolas: análisis del sector investigación y desarrollo  
Evangelina Baltar Salgado, Sara Fernández López, Isabel Neira Gómez y Milagros Vivel Búa
- 603/2011 Análisis económico y de rentabilidad del sistema financiero español, por tipo de entidades y tamaño, después de cuatro años de crisis y ante los retos de la reestructuración financiera  
Salvador Climent Serrano

- 604/2011 Does competition affect the price of water services? Evidence from Spain  
Germà Bel, Francisco González-Gómez & Andrés J Picazo-Tadeo
- 605/2011 The Effects of Remoteness in Japanese Educational Levels  
Jesús López-Rodríguez & Daisuke Nakamura
- 606/2011 The money market under information asymmetries and imperfectly competitive loan and deposit markets  
Aday Hernández
- 607/2011 The effects of airline and high speed train integration  
M. Pilar Socorro & M. Fernanda Viéens
- 608/2011 Consecuencias de la imbricación de los clientes en la dirección medioambiental: un análisis empírico  
Jesús Ángel del Brío González, Esteban Fernández Sánchez y Beatriz Junquera Cimadevilla
- 609/2011 Revenue autonomy and regional growth: an analysis for the 25 year-process of fiscal decentralisation in Spain  
Ramiro Gil-Serrate, Julio López-Laborda & Jesús Mur
- 610/2011 The accessibility to employment offices in the Spanish labor market: Implications in terms of registered unemployment  
Patricia Suárez, Matías Mayor & Begoña Cueto
- 611/2011 Time-varying integration in European government bond markets  
Pilar Abad, Helena Chuliá & Marta Gómez-Puig
- 612/2011 Production networks and EU enlargement: is there room for everyone in the automotive industry?  
Leticia Blázquez, Carmen Díaz-Mora & Rosario Gandoy
- 613/2011 Los factores pronóstico económico, estructura productiva y capacidad de innovar en la valoración de activos españoles  
M<sup>a</sup> Begoña Font Belaire y Alfredo Juan Grau Grau
- 614/2011 Capital structure adjustment process in firms accessing venture funding  
Marina Balboa, José Martí & Álvaro Tresierra
- 615/2011 Flexibilidad Contable en la Valoración de Instrumentos Financieros Híbridos  
Jacinto Marabel-Romo, Andrés Guiral-Contreras & José Luis Crespo-Espert
- 616/2011 Why are (or were) Spanish banks so profitable?  
Antonio Trujillo-Ponce