

**THE INTENSIVE AND EXTENSIVE MARGINS OF TRADE:
DECOMPOSING EXPORTS GROWTH DIFFERENCES
ACROSS SPANISH REGIONS**

ASIER MINONDO URIBE-ETXEBERRIA
FRANCISCO REQUENA SILVENTE

FUNDACIÓN DE LAS CAJAS DE AHORROS
DOCUMENTO DE TRABAJO
Nº 525/2010

De conformidad con la base quinta de la convocatoria del Programa de Estímulo a la Investigación, este trabajo ha sido sometido a evaluación externa anónima de especialistas cualificados a fin de contrastar su nivel técnico.

ISSN: 1988-8767

La serie **DOCUMENTOS DE TRABAJO** incluye avances y resultados de investigaciones dentro de los programas de la Fundación de las Cajas de Ahorros.

Las opiniones son responsabilidad de los autores.

THE INTENSIVE AND EXTENSIVE MARGINS OF TRADE: DECOMPOSING EXPORTS GROWTH DIFFERENCES ACROSS SPANISH REGIONS

Asier Minondo Uribe-Etxeberria*

Francisco Requena Silvente**

Abstract

Why do exports grow faster in some regions than in others? The regional literature has traditionally answered this question using a shift-share analysis, which focuses on regional differences in the composition of international exports by industry and destination. In this paper we apply an intensive/extensive margin decomposition framework, which separates the role of new trade relationships, product survival and product deepening to explain the differences in international exports growth across Spanish regions. Unlike the predominance role of the intensive margin in country-level studies, our results show that both the intensive and the extensive margin can be very important components of regional exports growth. Moreover, the relevance of each component varies to a great extent across regions. Our findings suggest that policies implemented to promote exports should be designed at the regional level.

Key words: international exports, growth, intensive margin, extensive margin, regions, Spain.

JEL classification: F1

Corresponding author: Asier Minondo Uribe-Etxeberria. Economics Department, Universidad de Deusto, Camino de Mundaiz s/n, 20012 San Sebastián (Spain). E-mail: aminondo@deusto.es

* University of Deusto

** University of Valencia

Acknowledgements: We would like to thank James Walker and participants at the ETSG X Annual Conference and XII Encuentro de Economía Aplicada. Any errors or omissions remain the authors' own responsibility. Asier Minondo thanks the Basque Government's Education and Universities Counseling and Diputación Foral de Gipuzkoa for financial support.

1. Introduction

Export growth serves to assess the sources of international competitiveness of a region. Foreign exports differ substantially among the regions of a country, both in levels and as a share of gross regional output, giving reasons for the analysis of international exports at the regional level.¹ Most studies of export growth at the subnational level have used traditional trade models based only on supply conditions (Balassa, 1965; Erikson and Hayward, 1992) or on a shift-share analysis (or constant market share analysis) which provides comparative measures of the relative importance of both supply and demand factors in explaining regions' export growth (Green and Allaway, 1985; Coughlin and Cartwright, 1987; Markusen et al, 1991; Kotabe and Czinkota, 1992; Nojonen et al, 1997; Gazel and Schwer, 1998; Williamson, 2006). Our paper contributes to this literature by showing that the decomposition of exports growth into an extensive margin (i.e. the expansion of trade due to an increase in the number of new trade relationships) and an intensive margin (i.e. the expansion in export value among existing trade relationships) is also useful for regional policy since, as we will show, the long run international exports growth drivers differ substantially at sub-national level.

The number of papers examining the differences in exports growth across countries based on calculating the extensive and intensive margins of trade is increasing rapidly. Felbermayr and Kohler (2006) propose a simple accounting approach to decompose long-run export growth into the extensive and intensive margin. When they examine the expansion of world trade in manufactures during the period 1950-1997, their main conclusion is that the extensive margin accounts for around 40 percent of exports growth.² Using a similar approach, Brenton and Newfarmer (2007) notice that the extensive margin accounts for only 20 percent of the overall exports growth during the 1995-2005 period. Besedes and Prusa (2007) extend this methodology by decomposing the intensive margin into a survival component and a deepening component. The first term measures how long existing trade relationships last; the second term measures the change in the value of exports among surviving

¹ Kitson et al. (2004) provide an interesting discussion about the concept of regional competitiveness and the importance of international trade indicators to measure it. Porter (1990) popularized the use of regional export shares as measure of regional competitiveness.

² Evenett and Venables (2002) is one of the first papers examining the importance of the extensive margin. Using a different approach, they show that the intensive margin and the extensive margin accounts for 63 percent and 37 percent, respectively, of exports growth among developing countries over the period 1970-1997.

trade relationships. The authors find that the extensive margin has played a minor role in explaining export growth among developing countries and that survival component is the most important factor explaining the poor performance in export growth of developing countries compared to developed countries. Helpman et al. (2008) using a sample of 158 countries for the 1970-1997 period also found that most of growth is due to trade between partners that were already trading at the beginning of the period. However, these authors do not discriminate by products and, hence, part of the increase in the intensive margin can be attributed to exports of new goods between old partners. Finally, Hummels and Klenow (2005) also analyse the extensive and the intensive margins of trade. They do not analyse how exports growth is decomposed in these two margins, but rather why large countries export more than small countries. Using a sample of 126 countries in 1995, they find that the extensive margin accounts for around 60 per cent of larger countries' higher volume of exports.³

The papers mentioned above use country-level data. This paper applies the extensive/intensive margin decomposition approach to a regional setting, which is important for understanding the nuances of export growth in countries with large inter-regional heterogeneity. Specifically, we broaden understanding of the differential foreign trade involvement of Spanish regions in the period 1988-2006. We also develop recent work in two directions. First, we further decompose the extensive margin into an entry and a value component. This decomposition enable us to analyse which drives growth in exports at the extensive margin: is it the capacity to augment the number of new trade relationships or is it the ability to select those new trade relationships in which the value of exports is large? Second, we calculate partner-specific hazard, deepening, entry and extensive value rates. Such a novel decomposition allow us to analyse whether a region's higher growth in exports is explained by the superiority of its intensive and extensive growth components in all trade relationships, or by the superiority of its intensive and extensive growth components in some trade relationships.

³ Another line of research uses firm-level data to measure the role of the extensive margin and the intensive margin in a specific country (Eaton et al (2007) for Colombia; Gleeson and Ruane (2007) for Ireland).

Our results can be summarised as follows. First, the extensive margin plays a significant role explaining differences in international exports growth across regions. Second, within the extensive margin, both the entry and the extensive value are important to explain the differences in exports growth across Spanish regions. In particular, the extensive value plays a larger role explaining the differences in exports growth in non-traditional markets for Spanish regions, such as non-European Union markets, whereas the entry rate plays a larger role explaining the differences in exports growth in traditional markets (European Union). Finally, we find a great deal of heterogeneity across regions in the component that contribute the most to exports growth.

These findings have implications for appropriate policy choice. First, in order to increase the value of exports at the extensive margin, in non-traditional markets, it is more effective the selection of markets with a high (potential) demand than to maximise the number of new export relationships. Second, since the main component of international export growth differs across regions, regional idiosyncrasy must be considered when designing export promotion policies.

The rest of the paper is organised as follows. Section 2 presents the methodology to decompose exports' growth between the extensive and the intensive margins, describes the extensions we introduce in this framework and explains how counterfactual calculations are performed. Section 3 describes the differences in the exports' growth components across Spanish regions and performs the counterfactual exercises. Finally, Section 4 summarises the main conclusions of the paper.

2. The exports growth decomposition methodology

In this section we present the methodology to decompose exports growth between the extensive and the intensive margins, explain the extensions we introduce in this framework and describe how counterfactual calculations are performed. Before we explain those analyses, it is necessary to determine how we define a trade relationship. We say that a trade relationship is created when a country (in our case, a Spanish region) starts exporting a new product to a destination country or an existing product to a new destination.

We start our analysis with the trade decomposition proposed by Felbermayr and Kohler (2006) and extended by Besedes and Prusa (2007). As we will explain in detailed below, we have also added two additional extensions. We decompose the absolute growth in exports between year t and year $t+1$ as,

$$V_{t+1} - V_t = \underbrace{\left(x_{t+1}v_{t+1}^0\right)}_{\text{extensive margin}} + \underbrace{\left[\left((1-h)n_t\right)\left(v_{t+1}-v_t\right) - \left(hn_tv_t\right)\right]}_{\text{intensive margin}} \quad (1)$$

where V is the total value of exports, which is obtained multiplying the number of trade relationships (n) by the average value of a trade relationship (v); x is the number of new trade relationships; h is the hazard rate of the trade relationship, which is defined as the probability that the export relationship fails and t is the year.

The absolute growth in exports is decomposed in three terms. The first term in equation (1) represents the extensive margin, $\left(x_{t+1}v_{t+1}^0\right)$, which gives the value of the new trade relationships that occur at year $t+1$. The second term is the product of the survival component, $\left[(1-h)n_t\right]$ and the deepening component, $\left(v_{t+1}-v_t\right)$. The hazard component gives the amount of export relationships that survive between year t and year $t+1$ and the deepening component is the absolute increase in the value of a surviving export relationship. The third term is the failure component, $\left(hn_tv_t\right)$ and gives the total value of those trade relationships that do not continue between year t and year $t+1$. The combination of last two terms yields the intensive margin of exports growth, that is, the increase in exports that stem from the change in value of the trade relationships that remain alive.

If we divide equation (1) by V_t , we can express the growth rate (g) between year $t+1$ and year t as:

$$g_{t+1,t} = ef + (1-h)d - h \quad (2)$$

where e is the entry rate: $\frac{x_{t+1}}{n_t}$, which is the number of new relationships relative to the number of trade relationships in year t ; and f is the extensive value rate: $\frac{v_{t+1}^0}{v_t}$, which gives the average value of a new trade relationship relative to the average value of a trade relationship in year t ; d is deepening rate: $\frac{v_{t+1} - v_t}{v_t}$, which gives the rate of increase of the average value of a trade relationship that survives; finally, h is the hazard rate.

Since the growth decomposition is expressed in relative terms, the extensive margin is now decomposed into a volume (e) and a value (f) component. This decomposition enables us to investigate what drives exports growth at the extensive margin: the capacity to open a large number of new trade relationships or the ability to extend to those trade relationships where the value of exports can be higher.

In order to refine the counterfactual calculations, we extend the exports growth decomposition to take into account that hazard and deepening rates may vary by industry and year of service (length of the spell). In addition to that, we further disaggregate the counterfactual analysis in order to take into account differences in the hazard, deepening, entry and extensive value rates by group of countries. This additional decomposition allows us to analyse whether a region's higher exports growth is explained by the superiority of its growth components in all trade relationships, or by the superiority of its exports growth components in some trade relationships.

Algebraically the broaden decomposition can be expressed as:

$$g_{t+1,t} = \sum_c \left\{ \sum_z \left\{ (e_{c,z} f_{c,z}) + \left[\sum_i \left((1 - h_{c,z,t+1}^i) d_{c,z}^i \alpha_{c,z}^i \right) - \left(h_{c,z,t+1}^i \alpha_{c,z}^i \right) \right] \right\} \right\} \quad (3)$$

where c is a country (or group of countries), z is industry and i the year of service.

Now $e_{c,z} = \frac{x_{c,z}}{n_t}$ is the ratio of new export relationships in industry z with partner c over

the total number of export relationships in year t ; $f = \frac{v_{c,z,t+1}^0}{v_t}$ is the ratio of the value of

a new trade relationship in industry z with partner c over the average value of a trade

relationship in year t ; $d_{c,z}^i = \frac{v_{c,z,t+1}^i - v_{c,z,t}^i}{v_{c,z,t}^i}$ is the deepening that occurs in z -industry's i -

th year of service trade relationship with partner c ; $h_{c,z}^i$ is the hazard rate that occurs

in z -industry's i -th year of service trade relationship with partner c ; and $\alpha_{c,z}^i = \frac{n_{c,z,t}^i v_{c,z,t}^i}{n_t v_t}$

is the share of the z -industry's i -th year of service trade relationships with partner c in year t in total exports. The new exports growth equation takes into account that the entry and the extensive value rates may change by partner, industry and year and that the hazard and the deepening rate may change by partner, industry, by year of service and by year.

We use a version of equation (3) to assess the contribution of each of the exports growth components to the differences in exports growth between EU countries (the traditional trading partners of Spanish regions) and the rest of the world. To do so we perform a series of counterfactual exercises. By substituting the growth elements (entry, the extensive value, survival and deepening) of a region with the growth elements of a counterfactual region characterised by having the largest export growth rate, we can identify which growth component is the main driver of the observed differences across regions. In particular, in order to assess the contribution of the entry rate component of exports growth differences across countries we can change equation (3) in the following way

$$\text{Entry: } g_{t+1,t} = \sum_c \left\{ \sum_z \left\{ \left(e_{c,z}^{CF} f_{c,z} \right) + \left[\sum_i \left((1 - h_{c,z,t+1}^i) d_{c,z}^i \alpha_{c,z}^i \right) - \left(h_{c,z,t+1}^i \alpha_{c,z}^i \right) \right] \right\} \right\} \quad (4)$$

where $e_{z,t+1}^{CF,i}$ is the counterfactual hazard rate for industry z , at the i -th year of service in year $t+1$.

If we change the extensive value rate, the equation becomes,

$$\text{Extensive value: } g_{t+1,t} = \sum_c \left\{ \sum_z \left\{ + \left(e_{c,z} f_{c,z}^{CF} \right) + \left[\sum_i \left((1 - h_{c,z,t+1}^i) d_{c,z}^i \alpha_{c,z}^i \right) - \left(h_{c,z,t+1}^i \alpha_{c,z}^i \right) \right] \right\} \right\} \quad (5)$$

If we change the deepening rate, the equation becomes,

$$\text{Deepening: } g_{t+1,t} = \sum_c \left\{ \sum_z \left\{ \left(e_{c,z} f_{c,z} \right) + \left[\sum_i \left((1 - h_{c,z,t+1}^i) d_{c,z}^{CF,i} \alpha_{c,z}^i \right) - \left(h_{c,z,t+1}^i \alpha_{c,z}^i \right) \right] \right\} \right\} \quad (6)$$

If we change the hazard rate, the equation becomes,

$$\text{Hazard: } g_{t+1,t} = \sum_c \left\{ \sum_z \left\{ \left(e_{c,z} f_{c,z} \right) \left[\sum_i \left((1 - h_{c,z,t+1}^{CF,i}) d_{c,z}^i \alpha_{c,z}^i \right) - \left(h_{c,z,t+1}^{CF,i} \alpha_{c,z}^i \right) \right] \right\} \right\} \quad (7)$$

In the next section we use equations (4)-(7) to analyse what explains the differences in exports growth across Spanish regions.⁴

3. The role of the intensive and extensive margins in Spanish regions exports' growth

3.1. Data

We use a unique database which offers a highly-disaggregated exports data at a regional level: the Spanish Agencia Tributaria Database (www.aeat.es). This database offers Spanish provinces' (NUTS 3) annual exports at the 8-digit Combined Nomenclature (CN) classification from 1988 onwards. First, in order to use data as close as possible to the firm level, trade relationships are defined at the more

⁴ From a methodological point of view there is some resemblance between our approach and the well-known shift-share analysis. The two approaches require measurements on a variable of interest (an exported product) for each member group (Spanish regions) at the beginning and the end of the period of analysis. In addition, both techniques use a counterfactual to evaluate the performance of the variable of interest. In the shift-share analysis we are interested in computing the *net shift* or difference between the actual growth and the expected growth based on the average growth of all regions in the group. The magnitude of the gain or loss represents the difference between the region's actual performance and the performance it would have had if its growth rate had been equal to the average growth of the entire group. In our approach we are interested in measuring the difference between actual growth and the expected growth based on replacing the actual components of the margins by the components of the margins of the region with the highest export growth. The magnitude of the gain or loss represents the difference between the region's actual performance and the performance it would have had if its growth rate in each component had been equal to the growth of the best region.

disaggregated province-level (NUTS 3). These trade relationships are then pooled at the regional-level (NUTS 2) in order to calculate exports growth components. Second, instead of using the more disaggregated 8-digit CN classification, which contains around 10000 product codes, we opt to collapse exports data at the 6-digit Harmonised System (HS) classification. This decision is due to the frequent changes in product classification that takes place at the CN. For example, during the 1988-2005 period, 5139 product lines were created and 4738 product lines were dropped from the CN (Eurostat, 2006). Those numerous changes may create substantial problems, because we may misclassify existing trade relationships whose product code changes as new relationships. Although the HS also experiences changes in product lines, they are smaller than those in the CN.⁵ However, the disadvantage of the HS is its lower disaggregation level: 5000 product lines. At lower disaggregation level each product line may include a range of individual goods, leading to an undervaluation of the extensive margin. Finally, we use Banco de España's exports trade deflator to transform current values into constant values.

Our empirical analysis is divided in two sections. First, we describe the differences in the components included in the growth equation (the survival rate, the deepening rate, the entry rate and the extensive value rate) across Spanish regions. Next, in order to study the weight of those components in explaining the differences in exports growth across Spanish regions, we perform a series of counterfactual calculations.

3.2. An overall view on exports growth components

Table 1 presents the growth of Spanish regions' exports in the 1988-2006 period. As can be seen in the table, there are important disparities in their performance. The Spanish region with the highest growth rate is Galicia (697%), followed by Extremadura (449%), Balearic Islands (428%) and Castilla-León (404%). Then, we find a group of six regions with a growth rate between 300%-400%: Asturias, Cantabria, Castilla la Manche, Catalonia, Madrid, Navarre and Rioja. These regions are followed by a group with a growth rate which lies between 100%-200%: Andalusia, Aragón, Basque Country and Murcia. The bottom positions are occupied

⁵ At 2005, 91% of the HS product codes that were created at 1988 remain active.

Table 1. Spanish regions' exports real growth, 1988-2006

Region	Total growth (%)	Average annual growth (%)
Andalusia	268	7.51
Aragón	222	6.71
Asturias	300	8.00
Balearic Islands	428	9.68
Basque Country	257	7.33
Canary Islands	-34	-2.29
Cantabria	352	8.74
Castille la Manche	358	8.82
Castille-León	404	9.40
Catalonia	379	9.10
Extremadura	449	9.92
Galicia	697	12.23
Madrid	311	8.17
Murcia	243	7.09
Navarre	365	8.92
Rioja	365	8.92
Valencia (Com. of)	167	5.60

Source: authors' calculations based on Agencia Tributaria's trade database.

by Valencia (167%) and the Canary Islands, which experience a reduction in the value of exports between 1988 and 2006. It is important to note that all Spanish regions, except for Canary Islands and Valencia have a higher exports growth during the period 1988-2006 than the world average: 178%.⁶

Once we have presented the overall growth in exports, we describe next each of the components that contribute to explain the differences in growth across Spanish regions.

The entry and the extensive value component

The first two components of the exports growth equation are related to the extensive margin: the entry rate (e) and the extensive value rate (f). The first component is the ratio of the number of new trade relationship over the number of trade relationship the previous year, and the second component is the ratio of the average value of a

⁶ Authors' calculation using data from the World Trade Organisation database.

new trade relationship relative to the average value of a trade relationship the previous year.

Table 2 presents the results of the analyses on the extensive components. The first thing we observe is the close correlation (0.71) that exists between the growth in exports and the growth in exports relationships in the 1988-2006 period across Spanish regions. This high correlation between the growth in exports value and the growth in exports relationships has also been found in previous studies using country-level data and has led some authors to argue that the extensive margin might play an important role in explaining exports growth.

As shown in the table, six Spanish regions have an increase in export relationships which is above 200%: Galicia, Castilla la Manche, Cantabria, Aragón, Extremadura and Castilla-León; the rest of the Spanish regions have an increase which is below 200%. We have to highlight the low growth in the Basque Country and, specially, in the Canary Islands. A reasonable explanation of the differences in exports relationships' growth across Spanish regions could be the number of trade relationships at the beginning of the period: those regions with few export relationships have more room to increase the number of export relationships than those regions that already have a large number of export relationships. Although there is a mild negative correlation between the amount of export relationships in 1988 and their growth (-0.25), Columns 3 and 4 of the table highlight that the room for new export relationships is very large for all regions. These columns present the number of trade relationships as a percentage of the maximum amount of trade relationships a region could have in 1988 and 2006. In order to calculate the maximum amount of trade relationships we multiply the maximum amount of products in the HS classification in 1988 and 2006 and the number of countries in 1988 and 2006. In particular, there were 5019 products in the HS1988 classification and 5224 products in the HS2006 classification; on its hand, there were 161 countries in 1988 and 193 countries in 2006. If we combine these figures the maximum amount of trade relationships in 1988 is 808059 and 1008232 for 2006. As shown in the table, the realised potential is very small for all Spanish regions, both in 1988 and 2006.

Table 2. Extensive margin

	Growth of exports (%)	Growth in export relationships (%)	Realized potential in 1988 (%)	Realized potential in 2006 (%)	Entry rate (avg.; %)	Extensive value (avg.; %)
Andalusia	268	215	1.56	3.95	52.23	25.60
Aragón	222	228	0.73	1.92	49.32	13.39
Asturias	300	182	0.24	0.55	53.82	39.01
Balearic Islands	428	115	0.25	0.42	57.53	73.28
Basque Country	257	84	2.97	4.37	44.00	27.99
Canary Islands	-34	-11	0.35	0.25	69.40	20.10
Cantabria	352	236	0.20	0.55	51.32	30.77
Castille la Manche	358	313	0.44	1.46	55.61	27.51
Castille-León	404	202	0.68	1.64	52.66	15.85
Catalonia	379	125	7.87	14.21	36.62	17.07
Extremadura	449	216	0.17	0.44	50.40	20.94
Galicia	697	440	0.78	3.37	50.40	24.53
Madrid	311	109	3.20	5.35	44.81	26.73
Murcia	243	178	0.57	1.26	44.49	17.65
Navarre	365	153	0.51	1.03	46.61	15.04
Rioja	365	169	0.21	0.46	49.34	15.72
Valencia (Com. of)	167	179	3.02	6.76	45.76	12.21

Source: authors' calculations based on Agencia Tributaria's trade database.

The final columns present the average values for the entry rate (e) and the extensive value rate (f). A striking conclusion of the data is the very large proportion that new relationships represent, as average, over total export relationships in the previous year. For all regions, except Catalonia, this ratio is above 40% and for eight regions the ratio is larger than 50%. These figures show the high activity that takes place at the extensive margin across Spanish regions. However, if we analyse the extensive value (f) column, we can see that the value of those new trade relationships is much lower than the average value of a trade relationship the previous year. Except for Asturias and the Balearic Islands, the average value of a new trade relationship is less than one-third of the average value of trade relationship the previous year; for seven regions is less than one-fifth.

The survival component

The third component of the exports growth equation, which is related to the intensive margin is the hazard rate. In order to calculate Spanish regions' exports survival rates we have to convert the annual data into spells of service for each trade relationship. The first spell of a trade relationship starts the first time the trade relationship occurs. The length of the spell of service is determined by the number of years that the trade relationship takes place without interruption. For example, if 1988 is the first year that Andalusia exports bicycles to Germany, this is the first spell of this trade relationship. If Andalusia also exports bicycles to Germany in 1989 and in 1990, but not in 1991, the length of the first spell is 3 years. If Andalusia re-starts the export of bicycles to Germany in 1992, that trade relationship will constitute a new spell. As our period of analysis is 1988-2006 the maximum length of a spell is 19 year, and a trade relationship can have, as maximum, 10 spells.

Table 3 presents the Kaplan-Meier survival rates for Spanish regions. A striking result of the table is the low percentage of trade-relationships that survive after one year of service. For example, in the Canary Islands only a quarter of trade relationships last more than 1 year. Two regions, Catalonia and Galicia, have the highest first-year survival rates: 47%. The majority of Spanish regions have a first-year survival rate around 38%-40%. Finally, the two island regions, Balearic Islands and Canary Islands have the worst first-year survival rates. When we analyse longer time periods, there is a further drop in the trade relationships that survive; in

Table 3. Survival rates

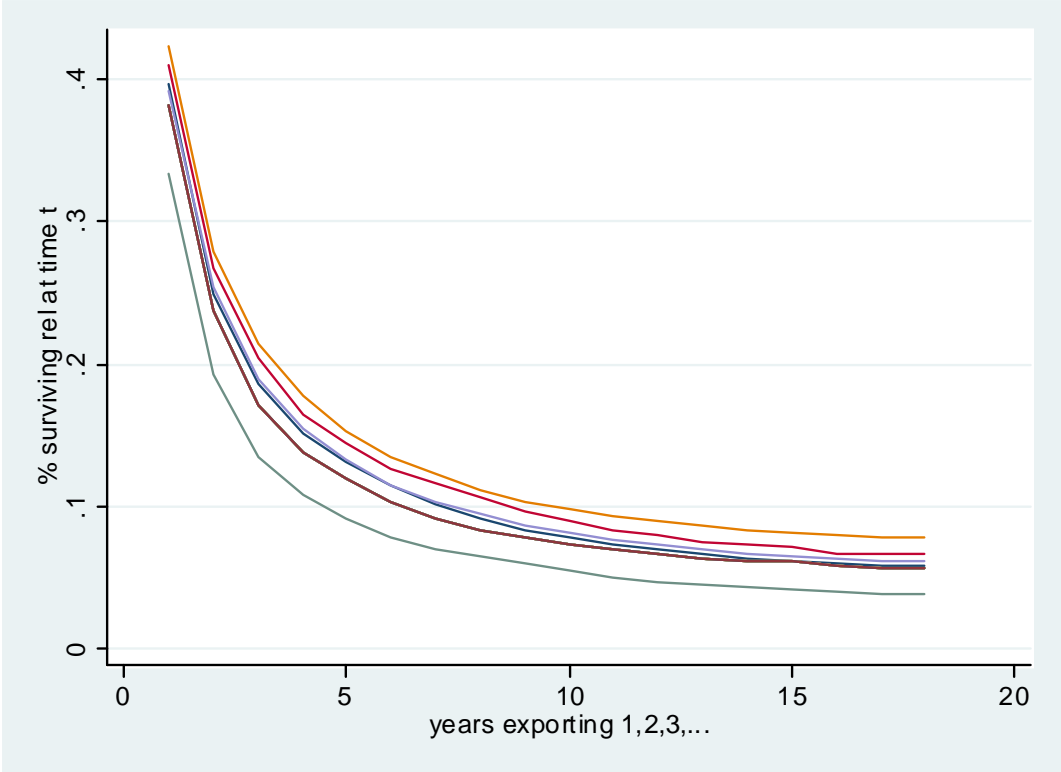
Region	% of exports that survive after 1 year	% of exports that survive after 2 years	% of exports that survive after 5 years
Andalusia	39.7	25.0	13.1
Aragón	42.4	27.9	15.4
Asturias	38.2	23.8	12.0
Balearic Islands	33.3	19.3	9.1
Basque Country	40.2	25.1	12.7
Canary Islands	24.8	11.3	3.8
Cantabria	41.0	26.7	14.4
Castille-La Mancha	40.4	26.2	14.2
Castille-León	39.2	25.5	13.2
Catalonia	47.0	31.6	17.9
Extremadura	40.9	27.8	15.9
Galicia	46.8	33.5	22.0
Madrid	41.3	25.6	12.9
Murcia	42.1	27.6	14.8
Navarre	41.6	26.8	14.0
Rioja	40.0	25.5	13.1
Valencia (Com. of)	42.1	27.1	14.4

Source: authors' calculations based on Agencia Tributaria's trade database.

particular, around 75% of the trade relationships disappear after two years of service and 85% after five years of service.

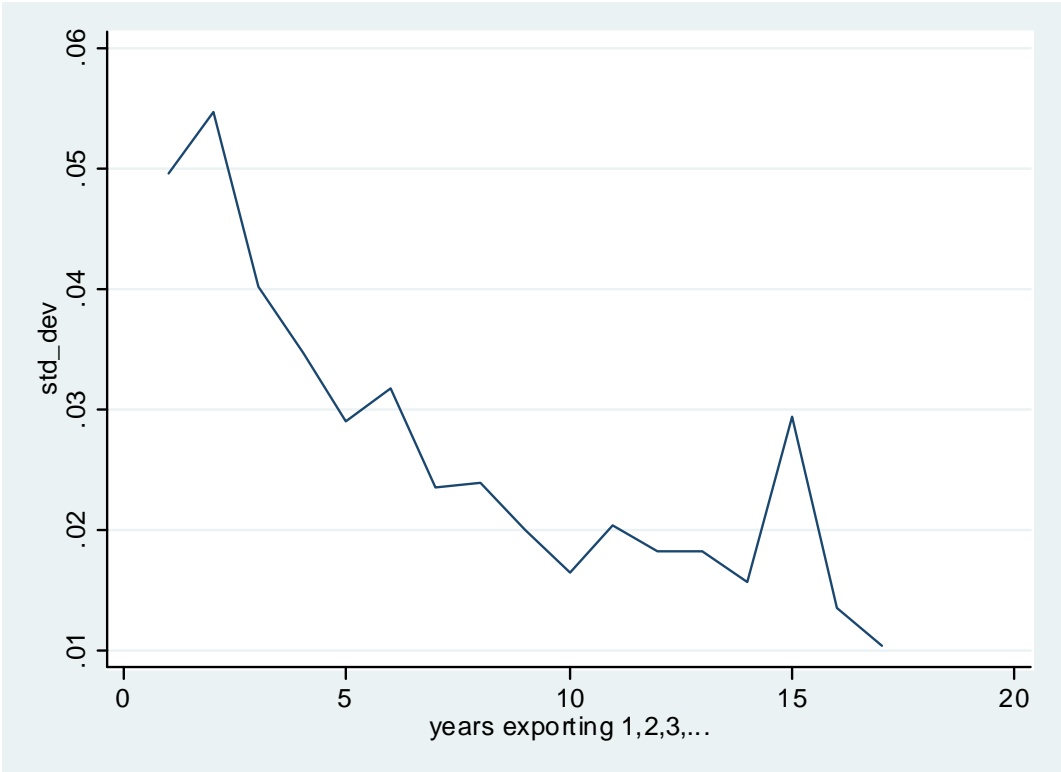
It is interesting to observe that, although there are differences in survival rates, the shape of the survival function is similar across Spanish regions. As can be seen in Figure 1, in the majority of the Spanish regions the survival function has a steep slope over the first 5-7 years and becomes flatter afterwards. The shape of the survival functions implies that new export relationships have a much higher failure

Figure 1. Export survival



Source: authors' calculations based on Agencia Tributaria's trade database.

Figure 2. Hazard rate standard deviations across Spanish regions by year of service



Source: authors' calculations based on Agencia Tributaria's trade database.

risk than established ones. It is interesting to note, as well, that except for Canary Islands' survival function, the remaining survival functions are jammed at the beginning of the analysis. After the third year of exporting, we observe more differences in the survival rate across Spanish regions; however, as we enlarge the duration of the trade relationship, except for Catalonia at the top and the Canary Islands at the bottom, there is convergence in survival rates across Spanish regions. This convergence process is also confirmed when we compare the standard deviation of hazard rates across Spanish regions by spell duration. As shown in Figure 2, the highest differences in the probability to fail across Spanish regions occur in the first three years of service. When the trade relationship lasts more years the difference in hazard rates across Spanish regions starts to diminish, and becomes smaller the longer the duration of the trade relationship.

The deepening component

The last component that explains exports' growth is the increase in the value, or deepening, of the relationships that survive. Firstly, we analyse the deepening of trade relationships that have lasted the whole period of analysis: 1988-2006. As shown in Table 4, long-term relationships only represent a very small percentage of the trade relationships that took place in 2006: in all regions long-term relationships never represent more than 10% of all trade relationships. However, in terms of value the share of long-term relationships is much higher, reaching almost 50% in some regions such as Catalonia, Valencia or Madrid. This result confirms the fact that long-term relationships command a larger value than new export relationships. Notwithstanding that, we should point out that in most regions the rate of growth of long-term relationships is lower than the average growth for all relationships.

The last column of Table 4 presents data on the median deepening for all surviving relationships irrespective of their eventual duration. We do not present average deepening, because the presence of extreme observations makes this statistic uninformative. As shown in the table, there are notable differences in the median deepening rate across Spanish regions. Galicia is the Spanish region that, by far, has the highest median deepening rate: 10.6%. After Galicia, there are three Spanish regions with a median growth rate between 4%-5%: Aragón, Cantabria and Catalonia; five regions in the 3%-4% range: Asturias, Basque Country, Castille la

Table 4. Export deepening

	Long term relationships			Year to year survivors
Region	Fraction of 2006 relationships (%)	Fraction of 2006 trade value (%)	Growth of trade value (average annual growth; %)	Median growth rate (%)
Andalusia	3.49	31.77	5.23	2.77
Aragón	3.09	27.01	0.66	4.74
Asturias	1.78	13.73	6.02	3.62
Balearic Islands	4.12	15.91	2.89	-0.19
Basque Country	6.73	38.20	7.64	3.13
Canary Islands	2.29	37.93	-4.04	-5.42
Cantabria	2.51	12.84	4.19	4.08
Castille la Manche	2.18	15.70	3.28	3.89
Castille-León	2.25	18.95	5.99	1.03
Catalonia	9.42	47.95	7.92	4.74
Extremadura	2.26	38.56	9.69	1.11
Galicia	1.81	33.23	9.62	10.61
Madrid	6.64	47.37	8.43	3.36
Murcia	6.40	37.98	5.07	3.70
Navarre	4.82	42.95	7.00	2.43
Rioja	4.07	43.36	7.25	2.39
Valencia	5.50	47.75	3.46	2.40

Source: authors' calculations based on Agencia Tributaria's trade database.

Manche, Madrid and Murcia; four regions in the 2%-3% range: Andalusia, Navarre, Rioja and Valencia; two regions with a deepening rate close to 1%: Castille-León and Extremadura; and two regions with a negative deepening rate: Balearic Islands and Canary Islands.

3.3. Counterfactual calculations

We use equations (4)-(7) to perform the counterfactual exercises. In these exercises we substitute the value of one of the growth components (entry, extensive value, survival or deepening), with a counterfactual value. If we observe a large change in the growth rate we can conclude that differences in the substituted component plays an important role in explaining exports growth differences; on the contrary, if the

growth rate only changes a little, the substituted component does not play a decisive role in explaining differences in exports growth.

An important decision when performing counterfactual calculations is to determine whose exports' growth components are selected as counterfactuals. In the first exercise, we decide to take as counterfactual the Spanish region with the highest growth rate in the 1988-2006 period: Galicia.⁷ Using as counterfactual the growth components of the Spanish region with the highest exports growth rate we can determine either the intensive margin or the extensive margin is explaining the differences in exports growth across Spanish regions. In particular, we can identify whether it is the entry rate, the extensive value rate, the survival rate or the deepening rate which drives the poorer performance of Spanish regions with respect to the region with the highest export growth, i.e. Galicia. However, in order to analyse the robustness of these results, we perform a second set of counterfactual calculations using the average value of Spanish regions' growth components as counterfactual.

In each exercise, we perform two sets of counterfactual calculations. In the first set (Table 5), we use average growth components to calculate the counterfactual growth rates, whereas in the second set (Table 6) we use partner-specific growth components to calculate counterfactual growth rates. Moreover, the first set of counterfactual calculations is divided in two levels. In the first level, or benchmark case, we only allow the hazard and deepening rates to vary by year of service. In the second level, we allow the hazard and deepening rates to vary by year of service and industry, and the entry and extensive value rates by industry.

The first column in Table 5 reproduces the Spanish regions' average annual exports growth data presented in Table 1. The rest of the columns report how many percentage points would a regions' average growth rate increase or decrease if it happened to have Galicia's growth component. For example, if we take the first row, we can see that Andalusia's average growth rate would have been 1.52 percentage points higher if it had had Galicia's entry rate, 1.13 percentage points higher if it had

⁷ In 2006, Galicia's GDP was 88% of Spanish regions' average GDP and its population was about 104% of Spanish regions' average population.

Table 5. Counterfactual calculations based on Galicia as a benchmark.

		By year of service (Benchmark)				By year of service and industry			
	Actual growth(%)	Entry	Extensive value	Survival	Deepening	Entry	Extensive value	Survival	Deepening
Andalusia	7.51	1.52	1.13	3.05	-1.03	0.17	2.30	1.66	-0.56
Aragón	6.71	1.15	3.82	2.59	-2.38	0.36	5.57	0.22	0.10
Asturias	8.00	2.03	-2.87	3.60	-0.86	-1.80	-0.02	2.41	-0.59
Balearic Islands	9.68	7.32	-25.93	6.15	4.28	6.67	-25.86	4.58	5.02
Basque Country	7.33	4.60	-1.34	2.50	-0.91	2.78	1.43	1.06	-0.22
Canary Islands	-2.29	7.03	6.96	11.93	5.81	4.86	9.03	10.68	7.15
Cantabria	8.74	1.62	-1.91	3.02	-0.04	0.37	-0.48	1.36	1.25
Castille la Manche	8.82	-0.09	0.87	3.10	-1.38	-1.17	2.23	1.92	-0.72
Castille-León	9.40	1.16	1.17	3.74	-3.78	0.62	1.92	2.40	-1.17
Catalonia	9.10	2.97	0.61	0.45	-0.71	2.60	1.28	-0.83	0.32
Extremadura	9.92	1.22	0.51	1.71	-0.56	-0.01	1.45	0.40	-0.72
Galicia*	12.23	0.00	0.00	0.00	0.00	0.00	0.00	0.00	0.00
Madrid	8.17	3.87	-1.71	2.40	-0.18	2.90	-0.25	0.89	0.84
Murcia	7.09	2.09	2.25	1.85	-0.34	1.53	3.43	0.63	-0.34
Navarre	8.92	1.97	1.25	2.58	-2.25	1.04	2.76	0.40	0.20
Rioja	8.92	1.59	1.34	3.32	-3.40	1.45	1.95	2.48	-3.77
Valencia (Com. of)	5.60	1.53	4.41	2.27	-0.86	1.58	4.52	1.36	1.10

Source: authors' calculations based on Agencia Tributaria's trade database.

Note: * Benchmark region. The counterfactual figures report how many percentage points would a regions' average growth rate increase or decrease if it happened to have Galicia's growth component. For example, if we take the first row, we can see that Andalusia's average growth rate would have been 1.52 percentage points higher if it had had Galicia's entry rate.

Table 6. Counterfactual calculations with partner-specific growth components based on Galicia as a benchmark.

By year of service, industry and group of countries	EU15 countries					Rest of countries				
Actual growth(%)	Entry	Extensive value	Survival	Deepening	Entry	Extensive value	Survival	Deepening		
Andalusia	7.51	0.80	-0.34	1.40	0.07	-0.58	2.75	-0.55	0.22	
Aragón	6.71	0.87	0.67	0.07	1.80	-0.18	5.59	-0.46	-0.03	
Asturias	8.00	1.08	-2.14	1.30	-0.96	-2.64	2.14	0.27	0.75	
Balearic Islands	9.68	9.44	-22.80	4.11	5.14	1.38	4.68	0.27	1.00	
Basque Country	7.33	2.60	-0.69	0.46	0.20	0.63	2.46	-0.68	0.41	
Canary Islands	-2.29	3.17	2.98	8.43	-7.45	2.39	8.04	5.54	-3.29	
Cantabria	8.74	1.25	-2.25	0.88	1.74	-0.68	1.62	-0.21	0.45	
Castille la Manche	8.82	-0.38	-1.74	1.26	0.69	-0.54	3.32	0.45	0.07	
Castille-León	9.40	0.02	-0.43	2.58	0.20	0.45	2.13	0.31	-0.56	
Catalonia	9.10	2.62	-0.45	-0.83	1.01	0.91	1.93	-1.08	0.08	
Extremadura	9.92	-1.16	-0.45	0.64	-0.06	0.82	1.36	0.27	0.02	
Galicia*	12.23	0.00	0.00	0.00	0.00	0.00	0.00	0.00	0.00	
Madrid	8.17	3.04	-0.92	0.11	1.06	0.55	1.15	-0.74	0.64	
Murcia	7.09	1.62	0.16	0.10	0.64	0.25	3.55	-0.51	0.09	
Navarre	8.92	1.17	-0.14	0.36	1.78	0.19	3.05	-0.50	-0.56	
Rioja	8.92	1.17	-0.63	1.76	-1.11	0.56	2.50	0.44	-0.17	
Valencia (Com. of)	5.60	1.68	0.58	0.28	2.11	0.32	4.60	-0.04	0.25	

Source: authors' calculations based on Agencia Tributaria's trade database.

Note: * Benchmark region. The counterfactual figures report how many percentage points would a regions' average growth rate increase or decrease if it happened to have Galicia's growth component. For example, if we take the first row, we can see that Andalusia's average growth rate would have been 0.80 percentage points higher if it had had Galicia's entry rate with EU15 countries.

had Galicia's extensive value, 3.05 percentage points higher if it had had Galicia's survival rate and 1.03 percentage points lower if it had had Galicia's deepening rate.

In the benchmark case, when we introduce Galicia's growth components as counterfactual, we observe that the most numerous positive impacts on growth occur under the counterfactual survival rate. In particular, if we analyse the counterfactual component that leads to a larger improvement in growth in each region, four times is the counterfactual entry rate, three times is the extensive value rate and nine times is the counterfactual survival rate. It is important to highlight that the deepening rate does not play any role in explaining Galicia's superior export growth. If we analyse region by region, we can see that an inferior survival is responsible for lower growth in Andalusia, Asturias, Canary Islands, Cantabria, Castille-León, Castille-La Mancha, Extremadura, Navarra and La Rioja. A milder entry rate explains the lower growth in Balearic Islands, Basque Country, Catalonia and Madrid. Finally, in the case of Aragón, Murcia and Valencia it is the extensive value which explains the lower growth. As opposite to country-level studies where most differences are explained by differences in survival and deepening rates, at the regional level we find that extensive margin also plays an important role.

In the second exercise, we calculate separate growth components for industries. This exercise aims to analyse whether a few industries explain the differences between actual and counterfactual exports growth. The industry-specific components are calculated at the HS 1-digit disaggregation level. Although it is possible to compute growth components for a finer disaggregation (2, 4 or 6-digits industries), the results of the counterfactual exercises become less informative due to the influence of outlier components, specially in deepening and in extensive value. It is interesting to observe an increase in the role of the extensive margin and a reduction in the role of the intensive margin in explaining differences in exports growth across Spanish regions. In particular, the extensive margin (either the entry or the extensive value) constitutes the growth component that leads to the highest increase in growth in eleven regions; on its hand, the survival element of the intensive margin is the growth component that leads to the highest increase in exports growth in five regions. It is interesting to note, as well, that it is the value component, rather than the entry component, which leads to largest changes in growth within the extensive margin.

As explained above, the second set of counterfactual calculations use partner-specific growth components. In order not to ravel the analysis with too many partners, we decide to calculate separate growth components only for two groups of countries: the EU15 and the rest of countries. As can be seen in Table 6, the use of partner-specific growth components leads to very interesting results. The extensive value, and in particular the extensive value with non-EU15 countries, is the most important growth component. It constitutes the most important counterfactual growth component in Andalusia, Aragón, Asturias, Castilla la Manche, Extremadura, Murcia, Navarra, Rioja and Valencia. The entry rate with EU15 countries is the major driver of differences in exports growth in Balearic Islands, Basque Country, Catalonia and Madrid. Survival in EU15 countries is the third most important growth component, and it is the major driver of differences in Canary Islands and Castilla-León. Finally, deepening with EU15 countries is the most important growth component for Cantabria.⁸

In order to analyse the robustness of these results, we perform a new counterfactual analysis using as benchmark the average of the Spanish regions' growth components.⁹ The idea is to check whether Galicia's superior exports growth is based on components that also explain the better or lower performance of other Spanish regions. Although there are similarities between the results obtained in the first counterfactual exercise and the second counterfactual exercise (Table 7a and Table 7b), the new results also introduce some nuances in the role played by some growth components. In the benchmark case, in 11 of the 15 regions, there is a coincidence in the growth component that contributes most to exports growth. As

⁸ When we compare the results for some regions in the deepening component in Table 5 and Table 6 some apparently counter-intuitive situations emerge. For example, when we substitute Canary Islands' industry-specific deepening rates with Galicia's ones, Canary Islands' exports grow 7.15 percentage points more each year. But when we substitute Canary Islands' industry-specific deepening rates with EU15 countries with Galicia's industry-specific deepening rates with EU15 countries, Canary Islands' exports grow 7.45 percentage points less each year; in the case of non-EU15 countries Canary Islands' exports grow 3.29 percentage points less each year. Although it is an awkward result, it is possible to explain it due to the way the deepening rate, $d=(v_{t+1}-v_t)/v_t$ is calculated: v_t is the average value of all export relationships in year t , whereas v_{t+1} is the average value of those export relationships that survive between year t and year $t+1$. The relative number of non-EU15 countries and EU15 countries export relationships in year t , may be different from the relative number of non-EU15 countries and EU15 countries surviving relationships between t and $t+1$; due to this change, the relative position of the average value with respect to non-EU15 countries' value and to EU15 countries' value may vary between t and $t+1$. Due to this change the average deepening rate may be greater or smaller than both country-specific deepening rates, leading to the counter-intuitive results in the counterfactual calculations.

⁹ We remove from the sample the two Spanish island regions: Canary Islands and Balearic Islands. The first region has had an atypical performance (negative export growth) compared to other Spanish regions; the second region has some growth components with outlier values.

Table 7a. Robustness analysis. Counterfactual calculations based on the average Spanish region as a benchmark

		By year of service (Benchmark)				By year of service and industry			
	Actual growth(%)	Entry	Extensive value	Survival	Deepening	Entry	Extensive value	Survival	Deepening
Andalusia	7.51	-0.91	0.32	0.99	0.68	-0.76	0.07	0.44	0.87
Aragón	6.71	-0.32	3.25	-0.11	-0.53	-0.50	3.48	-0.79	-0.76
Asturias	8.00	-1.22	-4.37	1.75	1.56	-3.31	-3.58	1.41	1.70
Balearic Islands	9.68	1.8	-26.13	4.19	6.53	4.36	-26.33	3.94	5.97
Basque Country	7.33	2.48	-2.11	0.35	0.76	1.99	-1.21	0.08	0.70
Canary Islands	-2.29	3.31	5.81	10.45	12.74	3.68	5.55	9.62	-3.63
Cantabria	8.74	-1.25	-3.03	0.69	1.79	-1.19	-3.20	0.13	1.73
Castilla-La Mancha	8.82	-2.78	0.02	0.87	0.76	-2.53	-0.31	0.44	0.70
Castilla-León	9.40	-0.53	0.59	1.45	-2.45	-0.21	0.41	1.58	-3.38
Catalonia	9.10	1.60	0.22	-2.36	-0.04	1.75	0.04	-2.75	-0.31
Extremadura	9.92	-0.53	-0.08	-0.76	0.24	-0.80	-0.22	-1.49	0.22
Galicia	12.23	-1.61	-0.56	-2.19	0.95	-0.58	-1.37	-1.30	-0.25
Madrid	8.17	1.70	-2.52	0.02	1.13	1.77	-2.80	-0.30	0.80
Murcia	7.09	0.36	1.65	-0.74	0.69	0.51	1.54	-1.09	0.96
Navarre	8.92	0.48	0.74	-0.01	-1.37	0.15	1.03	-0.58	-1.45
Rioja	8.92	-0.03	0.79	1.01	-1.97	0.29	0.39	0.51	-1.96
Valencia	5.60	0.12	3.86	-0.45	0.00	0.77	3.08	-0.95	-0.66

Source: authors' calculations based on Agencia Tributaria's trade database.

Note: Average Spanish regions' (except Canary Islands and Balearic Islands) growth components are used as counterfactuals. The counterfactual figures report how many percentage points would a regions' average growth rate increase or decrease if it happened to have Galicia's growth component. For example, if we take the first row, we can see that Andalusia's average growth rate would have been 0.91 percentage points lower if it had had the average Spanish regions' entry rate.

Table 7b. Robustness analysis. Counterfactual calculations with partner-specific growth components based on the average Spanish region as a benchmark.

By year of service, industry and group of countries	EU15 countries					Rest of countries			
	Actual growth(%)	Entry	Extensive value	Survival	Deepening	Entry	Extensive value	Survival	Deepening
Andalusia	7.51	-0.18	0.40	0.63	0.41	-0.50	-0.33	-0.32	0.54
Aragón	6.71	-0.05	1.22	-0.60	0.43	-0.35	2.66	-0.32	-0.09
Asturias	8.00	-0.24	-1.24	0.61	0.36	-2.63	-1.98	0.57	1.25
Balearic Islands	9.68	6.00	-22.58	3.58	5.09	0.82	-13.37	0.77	1.47
Basque Country	7.33	1.54	-0.26	-0.17	-0.04	0.72	-1.05	-0.37	0.78
Canary Islands	-2.29	0.80	4.50	7.68	-1.13	3.11	2.61	5.21	1.08
Cantabria	8.74	-0.31	-1.37	0.11	1.39	-0.83	-1.34	-0.09	0.64
Castilla-La Mancha	8.82	-1.82	-0.82	0.24	1.23	-0.74	0.65	0.22	0.35
Castilla-León	9.40	-0.97	0.31	2.01	-2.53	0.33	0.42	0.43	-0.52
Catalonia	9.10	1.60	-0.25	-1.83	-0.05	0.68	0.16	-1.33	1.11
Extremadura	9.92	-2.09	0.35	-0.74	0.39	0.69	0.01	0.25	0.13
Galicia	12.23	-0.46	0.50	-0.87	-0.90	0.05	-1.82	-0.04	0.30
Madrid	8.17	1.85	-0.60	-0.59	-0.12	0.32	-2.23	-0.60	1.71
Murcia	7.09	0.63	0.60	-0.93	1.11	0.01	0.90	-0.65	0.94
Navarre	8.92	0.20	0.29	-0.24	-0.29	0.02	0.80	-0.33	-0.53
Rioja	8.92	0.08	-0.08	0.41	-0.57	0.23	0.52	0.12	-0.30
Valencia	5.60	0.87	1.11	-0.89	0.52	0.11	2.15	-0.94	0.73

Source: authors' calculations based on Agencia Tributaria's trade database.

Note: Average Spanish regions' (except Canary Islands and Balearic Islands) growth components are used as counterfactuals. The counterfactual figures report how many percentage points would a regions' average growth rate increase or decrease if it happened to have Galicia's growth component. For example, if we take the first row, we can see that Andalusia's average growth rate would have been 0.91 percentage points lower if it had had the average Spanish regions' entry rate.

Galician deepening rate is below the average, in the new exercise the number of cases in which deepening is the most important component is as high as the number of cases for survival. In particular, deepening becomes the most important component for Balearic Islands, Canary Islands, Cantabria, Extremadura and Galicia. As was the case in the first exercise, in the benchmark analysis the intensive margin plays a larger role than the extensive margin, although the role of the latter is substantial.

When growth components are differentiated by industry, we also find that a large number of coincidences (10 over 15) in the growth component that leads to higher growth. We should stress the increase in the role of deepening, which becomes the component that drives the largest positive impact on exports growth for the majority of regions. On its hand, when compared to Table 5, there is a reduction in the role of survival and the extensive value. Finally, the entry rate seems almost as important as the extensive value explaining the differences in exports growth along the extensive margin. Finally, when we calculate partner-specific exports growth components, we find, as well, a large number of coincidences (11 over 16); we also confirm the larger role for deepening and a lower role for the extensive value.

To sum up, the use of the average Spanish region as a counterfactual confirms most of the conclusions that are drawn from the first exercise, although it introduces some nuances in the role of some components. First, we still find that both the extensive and intensive margins play a role in explaining exports growth across Spanish regions. Contrary to the results obtained in the first exercise, we find that both the entry rate and the extensive value play a role in the extensive value. As in the first exercise, we find that the extensive value plays a larger role in explaining the differences in exports growth in non-traditional markets, whereas the entry rate plays a larger role in explaining the differences in exports growth in traditional markets. Thirdly, the new counterfactual analysis gives a larger role to the deepening in explaining the differences in exports growth across Spanish regions. Finally, we still

observe a great deal of heterogeneity across regions in the component that contribute the most to international exports growth.¹⁰

4. Conclusions

This paper investigates the role of extensive and intensive margins on international export growth among Spanish regions over the period 1988-2006. For that purpose we apply the accounting framework proposed by Felbermayr and Kohler (2006) and extended by Besedes and Prusa (2007) to measure the relative importance of these two terms in global export growth. We provide two innovative improvements to this new methodology. Firstly, we decompose the extensive margin into an entry and a value component; this decomposition enables us to determine whether the capacity to open a large number of relationships or the ability to choose new markets which command a large exports value drives growth at this margin. Secondly, we also take into account differences in the hazard, deepening, entry and extensive value rates by country destination. This partner-specific decomposition allow us to analyse whether a region's higher exports growth is explained by the superiority of some of its exports growth components in all trade relationships, or by the superiority of some of its exports growth components in some trade relationships.

Our results show that the extensive margin plays a key role in explaining differences in exports growth across regions, much more than the one found using country-level data. In addition to that, the partner-specific decomposition shows that the extensive value plays a key role explaining the differences in exports growth in non-traditional markets for Spanish regions, such as non-European Union markets; on its hand, the survival, deepening and entry components play a larger role explaining the differences in exports growth in traditional markets (European Union). We also find a great extent of heterogeneity in component (survival, deepening, entry and extensive value) that contributes the most to exports growth across regions. Our results lead to relevant policy recommendations. First, in non-traditional markets, the capacity to select markets and products that command a high demand capacity is more important than the maximisation of new export relationships to achieve faster growth in exports. Second, due to the heterogeneity across regions in the component that

¹⁰ As an additional robustness test, we have also recalculated all growth components and counterfactual figures when trade relationships are defined at the regional level (NUTS-2). Our results are not altered either.

can contribute most to exports growth, policies should be designed at a regional level.

References

Balassa, B. (1965). "Trade Liberalization and "Revealed" Comparative Advantage", *Manchester School*, 33, 99-124.

Besedes, T. and Prusa, T.J. (2007). "The Role of Extensive and Intensive Margins and Export Growth", *NBER Working Paper 13268*, National Bureau of Economic Research, Cambridge, MA.

Coughlin, C. C. and Cartwright, P. A. (1987). "An Examination of State Foreign Export Promotion and Manufacturing Exports", *Journal of Regional Science*, 27, 3, 439-444.

Eaton, J., Eslava, M., Kugler, M. and Tybout, J. (2007). "Export Dynamics in Colombia: Firm-level Evidence", NBER WP 13531, October.

Erikson, R.A. and Hayward, D.J (1992). "Interstate Differences in Relative Export Performance: A Test of Factor Endowment Differences", *Geographical Analysis*, 24, pp. 223-238.

Eurostat (2006). *NC 2006. Update of CN Codes*, Eurostat, Luxemburg.

Evenett, S.J. and Venables, A. J. (2002). "Export Growth in Developing Countries: Market Entry and Bilateral Trade Flows", University of Bern Working Paper, mimeo.

Felbermayr, G.J. and Kohler, W. (2006). "Exploring the Intensive and Extensive Margins of World Trade", *Review of World Economics*, **142**, 4, 642-674.

Gazel, R. and Schwer, R. K. (1998). "Growth of International Exports Among the States: Can a Modified Shift-Share Explain it?", *International Regional Science Review*, 21(2), pp. 185-204.

Gleeson, A.M. and Ruane, F. (2007). "Irish Manufacturing Export Dynamics: Evidence of Exporter Heterogeneity in Boom and Slump Periods", *Review of World Economics*, 143 (2), 375-388.

Green, R. T. and Allaway, A. W. (1985). "Identification of Export Opportunities: A Shift-Share Approach", *Journal of Marketing*, 49 (1), 83-88.

Helpman, E., Melitz, M and Rubinstein, Y. (2008). "Estimating Trade Flows: Trading Partners and Trading Volumes", *Quarterly Journal of Economics*, **123**, 2, 441-487.

Hummels, D. and Klenow, P.J. (2005). "The Variety and Quality of a Nation's Exports", *American Economic Review*, **95**, 3, 704-723

Kitson, M., Martin, R and Tyler, P. (2004), "Regional Competitiveness: An Elusive yet Key Concept?", *Regional Studies*, 38 (9), 991-999

Kotabe, M. and Czinkota, M. R. (1992). "State Government Promotion of Manufacturing Exports: a Gap Analysis", *Journal of International Business Studies*, 23(4), 637-658.

Markusen, A., Nojonen, H. and Driessen, K. (1991). "International Trade, Productivity and US Regional Job Growth: A Shift-Share Interpretation", *International Regional Science Review*, **14**, 1, 15-39.

Nojonen, H, Markusen, A. and Driessen, K. (1997). "Trade and American cities: who has the comparative advantage?", *Economic Development Quarterly*. 11, 67–87.

Porter M. (1990) *The Competitive Advantage of Nations*. Basingstoke, Macmillan

Williamson, R. (2006). "Forecasting Regional Exports. New Tests of Shift-Share Techniques", *Growth and Change*, 11, 2, 19-25.

FUNDACIÓN DE LAS CAJAS DE AHORROS

DOCUMENTOS DE TRABAJO

Últimos números publicados

- 159/2000 Participación privada en la construcción y explotación de carreteras de peaje
Ginés de Rus, Manuel Romero y Lourdes Trujillo
- 160/2000 Errores y posibles soluciones en la aplicación del *Value at Risk*
Mariano González Sánchez
- 161/2000 Tax neutrality on saving assets. The spanish case before and after the tax reform
Cristina Ruza y de Paz-Curbera
- 162/2000 Private rates of return to human capital in Spain: new evidence
F. Barceinas, J. Oliver-Alonso, J.L. Raymond y J.L. Roig-Sabaté
- 163/2000 El control interno del riesgo. Una propuesta de sistema de límites
riesgo neutral
Mariano González Sánchez
- 164/2001 La evolución de las políticas de gasto de las Administraciones Públicas en los años 90
Alfonso Utrilla de la Hoz y Carmen Pérez Esparrells
- 165/2001 Bank cost efficiency and output specification
Emili Tortosa-Ausina
- 166/2001 Recent trends in Spanish income distribution: A robust picture of falling income inequality
Josep Oliver-Alonso, Xavier Ramos y José Luis Raymond-Bara
- 167/2001 Efectos redistributivos y sobre el bienestar social del tratamiento de las cargas familiares en
el nuevo IRPF
Nuria Badenes Plá, Julio López Laborda, Jorge Onrubia Fernández
- 168/2001 The Effects of Bank Debt on Financial Structure of Small and Medium Firms in some Euro-
pean Countries
Mónica Melle-Hernández
- 169/2001 La política de cohesión de la UE ampliada: la perspectiva de España
Ismael Sanz Labrador
- 170/2002 Riesgo de liquidez de Mercado
Mariano González Sánchez
- 171/2002 Los costes de administración para el afiliado en los sistemas de pensiones basados en cuentas
de capitalización individual: medida y comparación internacional.
José Enrique Devesa Carpio, Rosa Rodríguez Barrera, Carlos Vidal Meliá
- 172/2002 La encuesta continua de presupuestos familiares (1985-1996): descripción, representatividad
y propuestas de metodología para la explotación de la información de los ingresos y el gasto.
Llorenç Pou, Joaquín Alegre
- 173/2002 Modelos paramétricos y no paramétricos en problemas de concesión de tarjetas de crédito.
Rosa Puertas, María Bonilla, Ignacio Olmeda

- 174/2002 Mercado único, comercio intra-industrial y costes de ajuste en las manufacturas españolas.
José Vicente Blanes Cristóbal
- 175/2003 La Administración tributaria en España. Un análisis de la gestión a través de los ingresos y de los gastos.
Juan de Dios Jiménez Aguilera, Pedro Enrique Barrilao González
- 176/2003 The Falling Share of Cash Payments in Spain.
Santiago Carbó Valverde, Rafael López del Paso, David B. Humphrey
Publicado en "Moneda y Crédito" nº 217, pags. 167-189.
- 177/2003 Effects of ATMs and Electronic Payments on Banking Costs: The Spanish Case.
Santiago Carbó Valverde, Rafael López del Paso, David B. Humphrey
- 178/2003 Factors explaining the interest margin in the banking sectors of the European Union.
Joaquín Maudos y Juan Fernández Guevara
- 179/2003 Los planes de stock options para directivos y consejeros y su valoración por el mercado de valores en España.
Mónica Melle Hernández
- 180/2003 Ownership and Performance in Europe and US Banking – A comparison of Commercial, Co-operative & Savings Banks.
Yener Altunbas, Santiago Carbó y Phil Molyneux
- 181/2003 The Euro effect on the integration of the European stock markets.
Mónica Melle Hernández
- 182/2004 In search of complementarity in the innovation strategy: international R&D and external knowledge acquisition.
Bruno Cassiman, Reinhilde Veugelers
- 183/2004 Fijación de precios en el sector público: una aplicación para el servicio municipal de suministro de agua.
M^a Ángeles García Valiñas
- 184/2004 Estimación de la economía sumergida en España: un modelo estructural de variables latentes.
Ángel Alañón Pardo, Miguel Gómez de Antonio
- 185/2004 Causas políticas y consecuencias sociales de la corrupción.
Joan Oriol Prats Cabrera
- 186/2004 Loan bankers' decisions and sensitivity to the audit report using the belief revision model.
Andrés Guiral Contreras and José A. Gonzalo Angulo
- 187/2004 El modelo de Black, Derman y Toy en la práctica. Aplicación al mercado español.
Marta Tolentino García-Abadillo y Antonio Díaz Pérez
- 188/2004 Does market competition make banks perform well?.
Mónica Melle
- 189/2004 Efficiency differences among banks: external, technical, internal, and managerial
Santiago Carbó Valverde, David B. Humphrey y Rafael López del Paso

- 190/2004 Una aproximación al análisis de los costes de la esquizofrenia en España: los modelos jerárquicos bayesianos
F. J. Vázquez-Polo, M. A. Negrín, J. M. Cavasés, E. Sánchez y grupo RIRAG
- 191/2004 Environmental proactivity and business performance: an empirical analysis
Javier González-Benito y Óscar González-Benito
- 192/2004 Economic risk to beneficiaries in notional defined contribution accounts (NDCs)
Carlos Vidal-Meliá, Inmaculada Domínguez-Fabian y José Enrique Devesa-Carpio
- 193/2004 Sources of efficiency gains in port reform: non parametric malmquist decomposition tfp index for Mexico
Antonio Estache, Beatriz Tovar de la Fé y Lourdes Trujillo
- 194/2004 Persistencia de resultados en los fondos de inversión españoles
Alfredo Ciriaco Fernández y Rafael Santamaría Aquilué
- 195/2005 El modelo de revisión de creencias como aproximación psicológica a la formación del juicio del auditor sobre la gestión continuada
Andrés Guiral Contreras y Francisco Esteso Sánchez
- 196/2005 La nueva financiación sanitaria en España: descentralización y prospectiva
David Cantarero Prieto
- 197/2005 A cointegration analysis of the Long-Run supply response of Spanish agriculture to the common agricultural policy
José A. Mendez, Ricardo Mora y Carlos San Juan
- 198/2005 ¿Refleja la estructura temporal de los tipos de interés del mercado español preferencia por la liquidez?
Magdalena Massot Perelló y Juan M. Nave
- 199/2005 Análisis de impacto de los Fondos Estructurales Europeos recibidos por una economía regional: Un enfoque a través de Matrices de Contabilidad Social
M. Carmen Lima y M. Alejandro Cardenete
- 200/2005 Does the development of non-cash payments affect monetary policy transmission?
Santiago Carbó Valverde y Rafael López del Paso
- 201/2005 Firm and time varying technical and allocative efficiency: an application for port cargo handling firms
Ana Rodríguez-Álvarez, Beatriz Tovar de la Fe y Lourdes Trujillo
- 202/2005 Contractual complexity in strategic alliances
Jeffrey J. Reuer y Africa Ariño
- 203/2005 Factores determinantes de la evolución del empleo en las empresas adquiridas por opa
Nuria Alcalde Fradejas y Inés Pérez-Soba Aguilar
- 204/2005 Nonlinear Forecasting in Economics: a comparison between Comprehension Approach versus Learning Approach. An Application to Spanish Time Series
Elena Olmedo, Juan M. Valderas, Ricardo Gimeno and Lorenzo Escot

- 205/2005 Precio de la tierra con presión urbana: un modelo para España
Esther Decimavilla, Carlos San Juan y Stefan Sperlich
- 206/2005 Interregional migration in Spain: a semiparametric analysis
Adolfo Maza y José Villaverde
- 207/2005 Productivity growth in European banking
Carmen Murillo-Melchor, José Manuel Pastor y Emili Tortosa-Ausina
- 208/2005 Explaining Bank Cost Efficiency in Europe: Environmental and Productivity Influences.
Santiago Carbó Valverde, David B. Humphrey y Rafael López del Paso
- 209/2005 La elasticidad de sustitución intertemporal con preferencias no separables intratemporalmente: los casos de Alemania, España y Francia.
Elena Márquez de la Cruz, Ana R. Martínez Cañete y Inés Pérez-Soba Aguilar
- 210/2005 Contribución de los efectos tamaño, book-to-market y momentum a la valoración de activos: el caso español.
Begoña Font-Belaire y Alfredo Juan Grau-Grau
- 211/2005 Permanent income, convergence and inequality among countries
José M. Pastor and Lorenzo Serrano
- 212/2005 The Latin Model of Welfare: Do 'Insertion Contracts' Reduce Long-Term Dependence?
Luis Ayala and Magdalena Rodríguez
- 213/2005 The effect of geographic expansion on the productivity of Spanish savings banks
Manuel Illueca, José M. Pastor and Emili Tortosa-Ausina
- 214/2005 Dynamic network interconnection under consumer switching costs
Ángel Luis López Rodríguez
- 215/2005 La influencia del entorno socioeconómico en la realización de estudios universitarios: una aproximación al caso español en la década de los noventa
Marta Rahona López
- 216/2005 The valuation of spanish ipos: efficiency analysis
Susana Álvarez Otero
- 217/2005 On the generation of a regular multi-input multi-output technology using parametric output distance functions
Sergio Perelman and Daniel Santin
- 218/2005 La gobernanza de los procesos parlamentarios: la organización industrial del congreso de los diputados en España
Gonzalo Caballero Miguez
- 219/2005 Determinants of bank market structure: Efficiency and political economy variables
Francisco González
- 220/2005 Agresividad de las órdenes introducidas en el mercado español: estrategias, determinantes y medidas de performance
David Abad Díaz

- 221/2005 Tendencia post-anuncio de resultados contables: evidencia para el mercado español
Carlos Forner Rodríguez, Joaquín Marhuenda Fructuoso y Sonia Sanabria García
- 222/2005 Human capital accumulation and geography: empirical evidence in the European Union
Jesús López-Rodríguez, J. Andrés Faiña y Jose Lopez Rodríguez
- 223/2005 Auditors' Forecasting in Going Concern Decisions: Framing, Confidence and Information Processing
Waymond Rodgers and Andrés Guiral
- 224/2005 The effect of Structural Fund spending on the Galician region: an assessment of the 1994-1999 and 2000-2006 Galician CSFs
José Ramón Cancelo de la Torre, J. Andrés Faiña and Jesús López-Rodríguez
- 225/2005 The effects of ownership structure and board composition on the audit committee activity: Spanish evidence
Carlos Fernández Méndez and Rubén Arrondo García
- 226/2005 Cross-country determinants of bank income smoothing by managing loan loss provisions
Ana Rosa Fonseca and Francisco González
- 227/2005 Incumplimiento fiscal en el irpf (1993-2000): un análisis de sus factores determinantes
Alejandro Estellér Moré
- 228/2005 Region versus Industry effects: volatility transmission
Pilar Soriano Felipe and Francisco J. Climent Diranzo
- 229/2005 Concurrent Engineering: The Moderating Effect Of Uncertainty On New Product Development Success
Daniel Vázquez-Bustelo and Sandra Valle
- 230/2005 On zero lower bound traps: a framework for the analysis of monetary policy in the 'age' of central banks
Alfonso Palacio-Vera
- 231/2005 Reconciling Sustainability and Discounting in Cost Benefit Analysis: a methodological proposal
M. Carmen Almansa Sáez and Javier Calatrava Requena
- 232/2005 Can The Excess Of Liquidity Affect The Effectiveness Of The European Monetary Policy?
Santiago Carbó Valverde and Rafael López del Paso
- 233/2005 Inheritance Taxes In The Eu Fiscal Systems: The Present Situation And Future Perspectives.
Miguel Angel Barberán Lahuerta
- 234/2006 Bank Ownership And Informativeness Of Earnings.
Víctor M. González
- 235/2006 Developing A Predictive Method: A Comparative Study Of The Partial Least Squares Vs Maximum Likelihood Techniques.
Waymond Rodgers, Paul Pavlou and Andres Guiral.
- 236/2006 Using Compromise Programming for Macroeconomic Policy Making in a General Equilibrium Framework: Theory and Application to the Spanish Economy.
Francisco J. André, M. Alejandro Cardenete y Carlos Romero.

- 237/2006 Bank Market Power And Sme Financing Constraints.
Santiago Carbó-Valverde, Francisco Rodríguez-Fernández y Gregory F. Udell.
- 238/2006 Trade Effects Of Monetary Agreements: Evidence For Oecd Countries.
Salvador Gil-Pareja, Rafael Llorca-Vivero y José Antonio Martínez-Serrano.
- 239/2006 The Quality Of Institutions: A Genetic Programming Approach.
Marcos Álvarez-Díaz y Gonzalo Caballero Miguez.
- 240/2006 La interacción entre el éxito competitivo y las condiciones del mercado doméstico como determinantes de la decisión de exportación en las Pymes.
Francisco García Pérez.
- 241/2006 Una estimación de la depreciación del capital humano por sectores, por ocupación y en el tiempo.
Inés P. Murillo.
- 242/2006 Consumption And Leisure Externalities, Economic Growth And Equilibrium Efficiency.
Manuel A. Gómez.
- 243/2006 Measuring efficiency in education: an analysis of different approaches for incorporating non-discretionary inputs.
Jose Manuel Cordero-Ferrera, Francisco Pedraja-Chaparro y Javier Salinas-Jiménez
- 244/2006 Did The European Exchange-Rate Mechanism Contribute To The Integration Of Peripheral Countries?.
Salvador Gil-Pareja, Rafael Llorca-Vivero y José Antonio Martínez-Serrano
- 245/2006 Intergenerational Health Mobility: An Empirical Approach Based On The Echp.
Marta Pascual and David Cantarero
- 246/2006 Measurement and analysis of the Spanish Stock Exchange using the Lyapunov exponent with digital technology.
Salvador Rojí Ferrari and Ana Gonzalez Marcos
- 247/2006 Testing For Structural Breaks In Variance With additive Outliers And Measurement Errors.
Paulo M.M. Rodrigues and Antonio Rubia
- 248/2006 The Cost Of Market Power In Banking: Social Welfare Loss Vs. Cost Inefficiency.
Joaquín Maudos and Juan Fernández de Guevara
- 249/2006 Elasticidades de largo plazo de la demanda de vivienda: evidencia para España (1885-2000).
Desiderio Romero Jordán, José Félix Sanz Sanz y César Pérez López
- 250/2006 Regional Income Disparities in Europe: What role for location?.
Jesús López-Rodríguez and J. Andrés Faña
- 251/2006 Funciones abreviadas de bienestar social: Una forma sencilla de simultaneizar la medición de la eficiencia y la equidad de las políticas de gasto público.
Nuria Badenes Plá y Daniel Santín González
- 252/2006 "The momentum effect in the Spanish stock market: Omitted risk factors or investor behaviour?".
Luis Muga and Rafael Santamaría
- 253/2006 Dinámica de precios en el mercado español de gasolina: un equilibrio de colusión tácita.
Jordi Perdiguero García

- 254/2006 Desigualdad regional en España: renta permanente versus renta corriente.
José M. Pastor, Empar Pons y Lorenzo Serrano
- 255/2006 Environmental implications of organic food preferences: an application of the impure public goods model.
Ana Maria Aldanondo-Ochoa y Carmen Almansa-Sáez
- 256/2006 Family tax credits versus family allowances when labour supply matters: Evidence for Spain.
José Felix Sanz-Sanz, Desiderio Romero-Jordán y Santiago Álvarez-García
- 257/2006 La internacionalización de la empresa manufacturera española: efectos del capital humano genérico y específico.
José López Rodríguez
- 258/2006 Evaluación de las migraciones interregionales en España, 1996-2004.
María Martínez Torres
- 259/2006 Efficiency and market power in Spanish banking.
Rolf Färe, Shawna Grosskopf y Emili Tortosa-Ausina.
- 260/2006 Asimetrías en volatilidad, beta y contagios entre las empresas grandes y pequeñas cotizadas en la bolsa española.
Helena Chuliá y Hipòlit Torró.
- 261/2006 Birth Replacement Ratios: New Measures of Period Population Replacement.
José Antonio Ortega.
- 262/2006 Accidentes de tráfico, víctimas mortales y consumo de alcohol.
José M^a Arranz y Ana I. Gil.
- 263/2006 Análisis de la Presencia de la Mujer en los Consejos de Administración de las Mil Mayores Empresas Españolas.
Ruth Mateos de Cabo, Lorenzo Escot Mangas y Ricardo Gimeno Nogués.
- 264/2006 Crisis y Reforma del Pacto de Estabilidad y Crecimiento. Las Limitaciones de la Política Económica en Europa.
Ignacio Álvarez Peralta.
- 265/2006 Have Child Tax Allowances Affected Family Size? A Microdata Study For Spain (1996-2000).
Jaime Vallés-Giménez y Anabel Zárate-Marco.
- 266/2006 Health Human Capital And The Shift From Foraging To Farming.
Paolo Rungo.
- 267/2006 Financiación Autonómica y Política de la Competencia: El Mercado de Gasolina en Canarias.
Juan Luis Jiménez y Jordi Perdiguero.
- 268/2006 El cumplimiento del Protocolo de Kyoto para los hogares españoles: el papel de la imposición sobre la energía.
Desiderio Romero-Jordán y José Félix Sanz-Sanz.
- 269/2006 Banking competition, financial dependence and economic growth
Joaquín Maudos y Juan Fernández de Guevara
- 270/2006 Efficiency, subsidies and environmental adaptation of animal farming under CAP
Werner Kleinhanß, Carmen Murillo, Carlos San Juan y Stefan Sperlich

- 271/2006 Interest Groups, Incentives to Cooperation and Decision-Making Process in the European Union
A. Garcia-Lorenzo y Jesús López-Rodríguez
- 272/2006 Riesgo asimétrico y estrategias de momentum en el mercado de valores español
Luis Muga y Rafael Santamaría
- 273/2006 Valoración de capital-riesgo en proyectos de base tecnológica e innovadora a través de la teoría de opciones reales
Gracia Rubio Martín
- 274/2006 Capital stock and unemployment: searching for the missing link
Ana Rosa Martínez-Cañete, Elena Márquez de la Cruz, Alfonso Palacio-Vera and Inés Pérez-Soba Aguilar
- 275/2006 Study of the influence of the voters' political culture on vote decision through the simulation of a political competition problem in Spain
Sagrario Lantarón, Isabel Lillo, M^a Dolores López and Javier Rodrigo
- 276/2006 Investment and growth in Europe during the Golden Age
Antonio Cubel and M^a Teresa Sanchis
- 277/2006 Efectos de vincular la pensión pública a la inversión en cantidad y calidad de hijos en un modelo de equilibrio general
Robert Meneu Gaya
- 278/2006 El consumo y la valoración de activos
Elena Márquez y Belén Nieto
- 279/2006 Economic growth and currency crisis: A real exchange rate entropic approach
David Matesanz Gómez y Guillermo J. Ortega
- 280/2006 Three measures of returns to education: An illustration for the case of Spain
María Arrazola y José de Hevia
- 281/2006 Composition of Firms versus Composition of Jobs
Antoni Cunyat
- 282/2006 La vocación internacional de un holding tranviario belga: la Compagnie Mutuelle de Tramways, 1895-1918
Alberte Martínez López
- 283/2006 Una visión panorámica de las entidades de crédito en España en la última década.
Constantino García Ramos
- 284/2006 Foreign Capital and Business Strategies: a comparative analysis of urban transport in Madrid and Barcelona, 1871-1925
Alberte Martínez López
- 285/2006 Los intereses belgas en la red ferroviaria catalana, 1890-1936
Alberte Martínez López
- 286/2006 The Governance of Quality: The Case of the Agrifood Brand Names
Marta Fernández Barcala, Manuel González-Díaz y Emmanuel Raynaud
- 287/2006 Modelling the role of health status in the transition out of malthusian equilibrium
Paolo Rungo, Luis Currais and Berta Rivera
- 288/2006 Industrial Effects of Climate Change Policies through the EU Emissions Trading Scheme
Xavier Labandeira and Miguel Rodríguez

- 289/2006 Globalisation and the Composition of Government Spending: An analysis for OECD countries
Norman Gemmell, Richard Kneller and Ismael Sanz
- 290/2006 La producción de energía eléctrica en España: Análisis económico de la actividad tras la liberalización del Sector Eléctrico
Fernando Hernández Martínez
- 291/2006 Further considerations on the link between adjustment costs and the productivity of R&D investment: evidence for Spain
Desiderio Romero-Jordán, José Félix Sanz-Sanz and Inmaculada Álvarez-Ayuso
- 292/2006 Una teoría sobre la contribución de la función de compras al rendimiento empresarial
Javier González Benito
- 293/2006 Agility drivers, enablers and outcomes: empirical test of an integrated agile manufacturing model
Daniel Vázquez-Bustelo, Lucía Avella and Esteban Fernández
- 294/2006 Testing the parametric vs the semiparametric generalized mixed effects models
María José Lombardía and Stefan Sperlich
- 295/2006 Nonlinear dynamics in energy futures
Mariano Matilla-García
- 296/2006 Estimating Spatial Models By Generalized Maximum Entropy Or How To Get Rid Of W
Esteban Fernández Vázquez, Matías Mayor Fernández and Jorge Rodríguez-Valez
- 297/2006 Optimización fiscal en las transmisiones lucrativas: análisis metodológico
Félix Domínguez Barrero
- 298/2006 La situación actual de la banca online en España
Francisco José Climent Diranzo y Alexandre Momparler Pechuán
- 299/2006 Estrategia competitiva y rendimiento del negocio: el papel mediador de la estrategia y las capacidades productivas
Javier González Benito y Isabel Suárez González
- 300/2006 A Parametric Model to Estimate Risk in a Fixed Income Portfolio
Pilar Abad and Sonia Benito
- 301/2007 Análisis Empírico de las Preferencias Sociales Respecto del Gasto en Obra Social de las Cajas de Ahorros
Alejandro Esteller-Moré, Jonathan Jorba Jiménez y Albert Solé-Ollé
- 302/2007 Assessing the enlargement and deepening of regional trading blocs: The European Union case
Salvador Gil-Pareja, Rafael Llorca-Vivero y José Antonio Martínez-Serrano
- 303/2007 ¿Es la Franquicia un Medio de Financiación?: Evidencia para el Caso Español
Vanessa Solís Rodríguez y Manuel González Díaz
- 304/2007 On the Finite-Sample Biases in Nonparametric Testing for Variance Constancy
Paulo M.M. Rodrigues and Antonio Rubia
- 305/2007 Spain is Different: Relative Wages 1989-98
José Antonio Carrasco Gallego

- 306/2007 Poverty reduction and SAM multipliers: An evaluation of public policies in a regional framework
Francisco Javier De Miguel-Vélez y Jesús Pérez-Mayo
- 307/2007 La Eficiencia en la Gestión del Riesgo de Crédito en las Cajas de Ahorro
Marcelino Martínez Cabrera
- 308/2007 Optimal environmental policy in transport: unintended effects on consumers' generalized price
M. Pilar Socorro and Ofelia Betancor
- 309/2007 Agricultural Productivity in the European Regions: Trends and Explanatory Factors
Roberto Ezcurra, Belen Iraizoz, Pedro Pascual and Manuel Rapún
- 310/2007 Long-run Regional Population Divergence and Modern Economic Growth in Europe: a Case Study of Spain
María Isabel Ayuda, Fernando Collantes and Vicente Pinilla
- 311/2007 Financial Information effects on the measurement of Commercial Banks' Efficiency
Borja Amor, María T. Tascón and José L. Fanjul
- 312/2007 Neutralidad e incentivos de las inversiones financieras en el nuevo IRPF
Félix Domínguez Barrero
- 313/2007 The Effects of Corporate Social Responsibility Perceptions on The Valuation of Common Stock
Waymond Rodgers , Helen Choy and Andres Guiral-Contreras
- 314/2007 Country Creditor Rights, Information Sharing and Commercial Banks' Profitability Persistence across the world
Borja Amor, María T. Tascón and José L. Fanjul
- 315/2007 ¿Es Relevante el Déficit Corriente en una Unión Monetaria? El Caso Español
Javier Blanco González y Ignacio del Rosal Fernández
- 316/2007 The Impact of Credit Rating Announcements on Spanish Corporate Fixed Income Performance: Returns, Yields and Liquidity
Pilar Abad, Antonio Díaz and M. Dolores Robles
- 317/2007 Indicadores de Lealtad al Establecimiento y Formato Comercial Basados en la Distribución del Presupuesto
Cesar Augusto Bustos Reyes y Óscar González Benito
- 318/2007 Migrants and Market Potential in Spain over The XXth Century: A Test Of The New Economic Geography
Daniel A. Tirado, Jordi Pons, Elisenda Paluzie and Javier Silvestre
- 319/2007 El Impacto del Coste de Oportunidad de la Actividad Emprendedora en la Intención de los Ciudadanos Europeos de Crear Empresas
Luis Miguel Zapico Aldeano
- 320/2007 Los belgas y los ferrocarriles de vía estrecha en España, 1887-1936
Alberte Martínez López
- 321/2007 Competición política bipartidista. Estudio geométrico del equilibrio en un caso ponderado
Isabel Lillo, M^a Dolores López y Javier Rodrigo
- 322/2007 Human resource management and environment management systems: an empirical study
M^a Concepción López Fernández, Ana M^a Serrano Bedía and Gema García Piqueres

- 323/2007 Wood and industrialization. evidence and hypotheses from the case of Spain, 1860-1935.
Iñaki Iriarte-Goñi and María Isabel Ayuda Bosque
- 324/2007 New evidence on long-run monetary neutrality.
J. Cunado, L.A. Gil-Alana and F. Perez de Gracia
- 325/2007 Monetary policy and structural changes in the volatility of us interest rates.
Juncal Cuñado, Javier Gomez Biscarri and Fernando Perez de Gracia
- 326/2007 The productivity effects of intrafirm diffusion.
Lucio Fuentelsaz, Jaime Gómez and Sergio Palomas
- 327/2007 Unemployment duration, layoffs and competing risks.
J.M. Arranz, C. García-Serrano and L. Toharia
- 328/2007 El grado de cobertura del gasto público en España respecto a la UE-15
Nuria Rueda, Begoña Barruso, Carmen Calderón y M^a del Mar Herrador
- 329/2007 The Impact of Direct Subsidies in Spain before and after the CAP'92 Reform
Carmen Murillo, Carlos San Juan and Stefan Sperlich
- 330/2007 Determinants of post-privatisation performance of Spanish divested firms
Laura Cabeza García and Silvia Gómez Ansón
- 331/2007 ¿Por qué deciden diversificar las empresas españolas? Razones oportunistas versus razones económicas
Almudena Martínez Campillo
- 332/2007 Dynamical Hierarchical Tree in Currency Markets
Juan Gabriel Brida, David Matesanz Gómez and Wiston Adrián Risso
- 333/2007 Los determinantes sociodemográficos del gasto sanitario. Análisis con microdatos individuales
Ana María Angulo, Ramón Barberán, Pilar Egea y Jesús Mur
- 334/2007 Why do companies go private? The Spanish case
Inés Pérez-Soba Aguilar
- 335/2007 The use of gis to study transport for disabled people
Verónica Cañal Fernández
- 336/2007 The long run consequences of M&A: An empirical application
Cristina Bernad, Lucio Fuentelsaz and Jaime Gómez
- 337/2007 Las clasificaciones de materias en economía: principios para el desarrollo de una nueva clasificación
Valentín Edo Hernández
- 338/2007 Reforming Taxes and Improving Health: A Revenue-Neutral Tax Reform to Eliminate Medical and Pharmaceutical VAT
Santiago Álvarez-García, Carlos Pestana Barros y Juan Prieto-Rodríguez
- 339/2007 Impacts of an iron and steel plant on residential property values
Celia Bilbao-Terol
- 340/2007 Firm size and capital structure: Evidence using dynamic panel data
Victor M. González and Francisco González

- 341/2007 ¿Cómo organizar una cadena hotelera? La elección de la forma de gobierno
Marta Fernández Barcala y Manuel González Díaz
- 342/2007 Análisis de los efectos de la decisión de diversificar: un contraste del marco teórico “Agencia-Stewardship”
Almudena Martínez Campillo y Roberto Fernández Gago
- 343/2007 Selecting portfolios given multiple eurostoxx-based uncertainty scenarios: a stochastic goal programming approach from fuzzy betas
Enrique Ballester, Blanca Pérez-Gladish, Mar Arenas-Parra and Amelia Bilbao-Terol
- 344/2007 “El bienestar de los inmigrantes y los factores implicados en la decisión de emigrar”
Anastasia Hernández Alemán y Carmelo J. León
- 345/2007 Governance Decisions in the R&D Process: An Integrative Framework Based on TCT and Knowledge View of The Firm.
Andrea Martínez-Noya and Esteban García-Canal
- 346/2007 Diferencias salariales entre empresas públicas y privadas. El caso español
Begoña Cueto y Nuria Sánchez- Sánchez
- 347/2007 Effects of Fiscal Treatments of Second Home Ownership on Renting Supply
Celia Bilbao Terol and Juan Prieto Rodríguez
- 348/2007 Auditors’ ethical dilemmas in the going concern evaluation
Andres Guiral, Waymond Rodgers, Emiliano Ruiz and Jose A. Gonzalo
- 349/2007 Convergencia en capital humano en España. Un análisis regional para el periodo 1970-2004
Susana Morales Sequera y Carmen Pérez Esparrells
- 350/2007 Socially responsible investment: mutual funds portfolio selection using fuzzy multiobjective programming
Blanca M^a Pérez-Gladish, Mar Arenas-Parra , Amelia Bilbao-Terol and M^a Victoria Rodríguez-Uría
- 351/2007 Persistencia del resultado contable y sus componentes: implicaciones de la medida de ajustes por devengo
Raúl Iñiguez Sánchez y Francisco Poveda Fuentes
- 352/2007 Wage Inequality and Globalisation: What can we Learn from the Past? A General Equilibrium Approach
Concha Betrán, Javier Ferri and Maria A. Pons
- 353/2007 Eficacia de los incentivos fiscales a la inversión en I+D en España en los años noventa
Desiderio Romero Jordán y José Félix Sanz Sanz
- 354/2007 Convergencia regional en renta y bienestar en España
Robert Meneu Gaya
- 355/2007 Tributación ambiental: Estado de la Cuestión y Experiencia en España
Ana Carrera Poncela
- 356/2007 Salient features of dependence in daily us stock market indices
Luis A. Gil-Alana, Juncal Cuñado and Fernando Pérez de Gracia
- 357/2007 La educación superior: ¿un gasto o una inversión rentable para el sector público?
Inés P. Murillo y Francisco Pedraja

- 358/2007 Effects of a reduction of working hours on a model with job creation and job destruction
Emilio Domínguez, Miren Ullibarri y Idoya Zabaleta
- 359/2007 Stock split size, signaling and earnings management: Evidence from the Spanish market
José Yagüe, J. Carlos Gómez-Sala and Francisco Poveda-Fuentes
- 360/2007 Modelización de las expectativas y estrategias de inversión en mercados de derivados
Begoña Font-Belaire
- 361/2008 Trade in capital goods during the golden age, 1953-1973
M^a Teresa Sanchis and Antonio Cubel
- 362/2008 El capital económico por riesgo operacional: una aplicación del modelo de distribución de pérdidas
Enrique José Jiménez Rodríguez y José Manuel Fera Domínguez
- 363/2008 The drivers of effectiveness in competition policy
Joan-Ramon Borrell and Juan-Luis Jiménez
- 364/2008 Corporate governance structure and board of directors remuneration policies: evidence from Spain
Carlos Fernández Méndez, Rubén Arrondo García and Enrique Fernández Rodríguez
- 365/2008 Beyond the disciplinary role of governance: how boards and donors add value to Spanish foundations
Pablo De Andrés Alonso, Valentín Azofra Palenzuela y M. Elena Romero Merino
- 366/2008 Complejidad y perfeccionamiento contractual para la contención del oportunismo en los acuerdos de franquicia
Vanessa Solís Rodríguez y Manuel González Díaz
- 367/2008 Inestabilidad y convergencia entre las regiones europeas
Jesús Mur, Fernando López y Ana Angulo
- 368/2008 Análisis espacial del cierre de explotaciones agrarias
Ana Aldanondo Ochoa, Carmen Almansa Sáez y Valero Casanovas Oliva
- 369/2008 Cross-Country Efficiency Comparison between Italian and Spanish Public Universities in the period 2000-2005
Tommaso Agasisti and Carmen Pérez Esparrells
- 370/2008 El desarrollo de la sociedad de la información en España: un análisis por comunidades autónomas
María Concepción García Jiménez y José Luis Gómez Barroso
- 371/2008 El medioambiente y los objetivos de fabricación: un análisis de los modelos estratégicos para su consecución
Lucía Avella Camarero, Esteban Fernández Sánchez y Daniel Vázquez-Bustelo
- 372/2008 Influence of bank concentration and institutions on capital structure: New international evidence
Víctor M. González and Francisco González
- 373/2008 Generalización del concepto de equilibrio en juegos de competición política
M^a Dolores López González y Javier Rodrigo Hitos
- 374/2008 Smooth Transition from Fixed Effects to Mixed Effects Models in Multi-level regression Models
María José Lombardía and Stefan Sperlich

- 375/2008 A Revenue-Neutral Tax Reform to Increase Demand for Public Transport Services
Carlos Pestana Barros and Juan Prieto-Rodríguez
- 376/2008 Measurement of intra-distribution dynamics: An application of different approaches to the European regions
Adolfo Maza, María Hierro and José Villaverde
- 377/2008 Migración interna de extranjeros y ¿nueva fase en la convergencia?
María Hierro y Adolfo Maza
- 378/2008 Efectos de la Reforma del Sector Eléctrico: Modelización Teórica y Experiencia Internacional
Ciro Eduardo Bazán Navarro
- 379/2008 A Non-Parametric Independence Test Using Permutation Entropy
Mariano Matilla-García and Manuel Ruiz Marín
- 380/2008 Testing for the General Fractional Unit Root Hypothesis in the Time Domain
Uwe Hassler, Paulo M.M. Rodrigues and Antonio Rubia
- 381/2008 Multivariate gram-charlier densities
Esther B. Del Brio, Trino-Manuel Níguez and Javier Perote
- 382/2008 Analyzing Semiparametrically the Trends in the Gender Pay Gap - The Example of Spain
Ignacio Moral-Arce, Stefan Sperlich, Ana I. Fernández-Saínz and Maria J. Roca
- 383/2008 A Cost-Benefit Analysis of a Two-Sided Card Market
Santiago Carbó Valverde, David B. Humphrey, José Manuel Liñares Zegarra and Francisco Rodríguez Fernández
- 384/2008 A Fuzzy Bicriteria Approach for Journal Deselection in a Hospital Library
M. L. López-Avello, M. V. Rodríguez-Uría, B. Pérez-Gladish, A. Bilbao-Terol, M. Arenas-Parra
- 385/2008 Valoración de las grandes corporaciones farmacéuticas, a través del análisis de sus principales intangibles, con el método de opciones reales
Gracia Rubio Martín y Prosper Lamothe Fernández
- 386/2008 El marketing interno como impulsor de las habilidades comerciales de las pyme españolas: efectos en los resultados empresariales
M^a Leticia Santos Vijande, M^a José Sanzo Pérez, Nuria García Rodríguez y Juan A. Trespalacios Gutiérrez
- 387/2008 Understanding Warrants Pricing: A case study of the financial market in Spain
David Abad y Belén Nieto
- 388/2008 Aglomeración espacial, Potencial de Mercado y Geografía Económica: Una revisión de la literatura
Jesús López-Rodríguez y J. Andrés Faíña
- 389/2008 An empirical assessment of the impact of switching costs and first mover advantages on firm performance
Jaime Gómez, Juan Pablo Maícas
- 390/2008 Tender offers in Spain: testing the wave
Ana R. Martínez-Cañete y Inés Pérez-Soba Aguilar

- 391/2008 La integración del mercado español a finales del siglo XIX: los precios del trigo entre 1891 y 1905
Mariano Matilla García, Pedro Pérez Pascual y Basilio Sanz Carnero
- 392/2008 Cuando el tamaño importa: estudio sobre la influencia de los sujetos políticos en la balanza de bienes y servicios
Alfonso Echazarra de Gregorio
- 393/2008 Una visión cooperativa de las medidas ante el posible daño ambiental de la desalación
Borja Montaña Sanz
- 394/2008 Efectos externos del endeudamiento sobre la calificación crediticia de las Comunidades Autónomas
Andrés Leal Marcos y Julio López Laborda
- 395/2008 Technical efficiency and productivity changes in Spanish airports: A parametric distance functions approach
Beatriz Tovar & Roberto Rendeiro Martín-Cejas
- 396/2008 Network analysis of exchange data: Interdependence drives crisis contagion
David Matesanz Gómez & Guillermo J. Ortega
- 397/2008 Explaining the performance of Spanish privatised firms: a panel data approach
Laura Cabeza Garcia and Silvia Gomez Anson
- 398/2008 Technological capabilities and the decision to outsource R&D services
Andrea Martínez-Noya and Esteban García-Canal
- 399/2008 Hybrid Risk Adjustment for Pharmaceutical Benefits
Manuel García-Goñi, Pere Ibern & José María Inoriza
- 400/2008 The Team Consensus–Performance Relationship and the Moderating Role of Team Diversity
José Henrique Dieguez, Javier González-Benito and Jesús Galende
- 401/2008 The institutional determinants of CO₂ emissions: A computational modelling approach using Artificial Neural Networks and Genetic Programming
Marcos Álvarez-Díaz , Gonzalo Caballero Miguez and Mario Soliño
- 402/2008 Alternative Approaches to Include Exogenous Variables in DEA Measures: A Comparison Using Monte Carlo
José Manuel Cordero-Ferrera, Francisco Pedraja-Chaparro and Daniel Santín-González
- 403/2008 Efecto diferencial del capital humano en el crecimiento económico andaluz entre 1985 y 2004: comparación con el resto de España
M^a del Pópulo Pablo-Romero Gil-Delgado y M^a de la Palma Gómez-Calero Valdés
- 404/2008 Análisis de fusiones, variaciones conjeturales y la falacia del estimador en diferencias
Juan Luis Jiménez y Jordi Perdiguero
- 405/2008 Política fiscal en la uem: ¿basta con los estabilizadores automáticos?
Jorge Uxó González y M^a Jesús Arroyo Fernández
- 406/2008 Papel de la orientación emprendedora y la orientación al mercado en el éxito de las empresas
Óscar González-Benito, Javier González-Benito y Pablo A. Muñoz-Gallego
- 407/2008 La presión fiscal por impuesto sobre sociedades en la unión europea
Elena Fernández Rodríguez, Antonio Martínez Arias y Santiago Álvarez García

- 408/2008 The environment as a determinant factor of the purchasing and supply strategy: an empirical analysis
Dr. Javier González-Benito y MS Duilio Reis da Rocha
- 409/2008 Cooperation for innovation: the impact on innovatory effort
Gloria Sánchez González and Liliana Herrera
- 410/2008 Spanish post-earnings announcement drift and behavioral finance models
Carlos Forner and Sonia Sanabria
- 411/2008 Decision taking with external pressure: evidence on football manager dismissals in argentina and their consequences
Ramón Flores, David Forrest and Juan de Dios Tena
- 412/2008 Comercio agrario latinoamericano, 1963-2000: aplicación de la ecuación gravitacional para flujos desagregados de comercio
Raúl Serrano y Vicente Pinilla
- 413/2008 Voter heuristics in Spain: a descriptive approach elector decision
José Luís Sáez Lozano and Antonio M. Jaime Castillo
- 414/2008 Análisis del efecto área de salud de residencia sobre la utilización y acceso a los servicios sanitarios en la Comunidad Autónoma Canaria
Ignacio Abásolo Alessón, Lidia García Pérez, Raquel Aguiar Ibáñez y Asier Amador Robayna
- 415/2008 Impact on competitive balance from allowing foreign players in a sports league: an analytical model and an empirical test
Ramón Flores, David Forrest & Juan de Dios Tena
- 416/2008 Organizational innovation and productivity growth: Assessing the impact of outsourcing on firm performance
Alberto López
- 417/2008 Value Efficiency Analysis of Health Systems
Eduardo González, Ana Cárcaba & Juan Ventura
- 418/2008 Equidad en la utilización de servicios sanitarios públicos por comunidades autónomas en España: un análisis multinivel
Ignacio Abásolo, Jaime Pinilla, Miguel Negrín, Raquel Aguiar y Lidia García
- 419/2008 Piedras en el camino hacia Bolonia: efectos de la implantación del EEES sobre los resultados académicos
Carmen Florido, Juan Luis Jiménez e Isabel Santana
- 420/2008 The welfare effects of the allocation of airlines to different terminals
M. Pilar Socorro and Ofelia Betancor
- 421/2008 How bank capital buffers vary across countries. The influence of cost of deposits, market power and bank regulation
Ana Rosa Fonseca and Francisco González
- 422/2008 Analysing health limitations in Spain: an empirical approach based on the European Community household panel
Marta Pascual and David Cantarero

- 423/2008 Regional productivity variation and the impact of public capital stock: an analysis with spatial interaction, with reference to Spain
Miguel Gómez-Antonio and Bernard Fingleton
- 424/2008 Average effect of training programs on the time needed to find a job. The case of the training schools program in the south of Spain (Seville, 1997-1999).
José Manuel Cansino Muñoz-Repiso and Antonio Sánchez Braza
- 425/2008 Medición de la eficiencia y cambio en la productividad de las empresas distribuidoras de electricidad en Perú después de las reformas
Raúl Pérez-Reyes y Beatriz Tovar
- 426/2008 Acercando posturas sobre el descuento ambiental: sondeo Delphi a expertos en el ámbito internacional
Carmen Almansa Sáez y José Miguel Martínez Paz
- 427/2008 Determinants of abnormal liquidity after rating actions in the Corporate Debt Market
Pilar Abad, Antonio Díaz and M. Dolores Robles
- 428/2008 Export led-growth and balance of payments constrained. New formalization applied to Cuban commercial regimes since 1960
David Matesanz Gómez, Guadalupe Fugarolas Álvarez-Ude and Isis Mañalich Gálvez
- 429/2008 La deuda implícita y el desequilibrio financiero-actuarial de un sistema de pensiones. El caso del régimen general de la seguridad social en España
José Enrique Devesa Carpio y Mar Devesa Carpio
- 430/2008 Efectos de la descentralización fiscal sobre el precio de los carburantes en España
Desiderio Romero Jordán, Marta Jorge García-Inés y Santiago Álvarez García
- 431/2008 Euro, firm size and export behavior
Silviano Esteve-Pérez, Salvador Gil-Pareja, Rafael Llorca-Vivero and José Antonio Martínez-Serrano
- 432/2008 Does social spending increase support for free trade in advanced democracies?
Ismael Sanz, Ferran Martínez i Coma and Federico Steinberg
- 433/2008 Potencial de Mercado y Estructura Espacial de Salarios: El Caso de Colombia
Jesús López-Rodríguez y Maria Cecilia Acevedo
- 434/2008 Persistence in Some Energy Futures Markets
Juncal Cunado, Luis A. Gil-Alana and Fernando Pérez de Gracia
- 435/2008 La inserción financiera externa de la economía francesa: inversores institucionales y nueva gestión empresarial
Ignacio Álvarez Peralta
- 436/2008 ¿Flexibilidad o rigidez salarial en España?: un análisis a escala regional
Ignacio Moral Arce y Adolfo Maza Fernández
- 437/2009 Intangible relationship-specific investments and the performance of r&d outsourcing agreements
Andrea Martínez-Noya, Esteban García-Canal & Mauro F. Guillén
- 438/2009 Friendly or Controlling Boards?
Pablo de Andrés Alonso & Juan Antonio Rodríguez Sanz

- 439/2009 La sociedad Trenor y Cía. (1838-1926): un modelo de negocio industrial en la España del siglo XIX
Amparo Ruiz Llopis
- 440/2009 Continental bias in trade
Salvador Gil-Pareja, Rafael Llorca-Vivero & José Antonio Martínez Serrano
- 441/2009 Determining operational capital at risk: an empirical application to the retail banking
Enrique José Jiménez-Rodríguez, José Manuel Feria-Domínguez & José Luis Martín-Marín
- 442/2009 Costes de mitigación y escenarios post-kyoto en España: un análisis de equilibrio general para España
Mikel González Ruiz de Eguino
- 443/2009 Las revistas españolas de economía en las bibliotecas universitarias: ranking, valoración del indicador y del sistema
Valentín Edo Hernández
- 444/2009 Convergencia económica en España y coordinación de políticas económicas. un estudio basado en la estructura productiva de las CC.AA.
Ana Cristina Mingorance Arnáiz
- 445/2009 Instrumentos de mercado para reducir emisiones de co2: un análisis de equilibrio general para España
Mikel González Ruiz de Eguino
- 446/2009 El comercio intra e inter-regional del sector Turismo en España
Carlos Llano y Tamara de la Mata
- 447/2009 Efectos del incremento del precio del petróleo en la economía española: Análisis de cointegración y de la política monetaria mediante reglas de Taylor
Fernando Hernández Martínez
- 448/2009 Bologna Process and Expenditure on Higher Education: A Convergence Analysis of the EU-15
T. Agasisti, C. Pérez Esparrells, G. Catalano & S. Morales
- 449/2009 Global Economy Dynamics? Panel Data Approach to Spillover Effects
Gregory Daco, Fernando Hernández Martínez & Li-Wu Hsu
- 450/2009 Pricing levered warrants with dilution using observable variables
Isabel Abinzano & Javier F. Navas
- 451/2009 Information technologies and financial performance: The effect of technology diffusion among competitors
Lucio Fuentelsaz, Jaime Gómez & Sergio Palomas
- 452/2009 A Detailed Comparison of Value at Risk in International Stock Exchanges
Pilar Abad & Sonia Benito
- 453/2009 Understanding offshoring: has Spain been an offshoring location in the nineties?
Belén González-Díaz & Rosario Gandoy
- 454/2009 Outsourcing decision, product innovation and the spatial dimension: Evidence from the Spanish footwear industry
José Antonio Belso-Martínez

- 455/2009 Does playing several competitions influence a team's league performance? Evidence from Spanish professional football
Andrés J. Picazo-Tadeo & Francisco González-Gómez
- 456/2009 Does accessibility affect retail prices and competition? An empirical application
Juan Luis Jiménez and Jordi Perdiguero
- 457/2009 Cash conversion cycle in smes
Sonia Baños-Caballero, Pedro J. García-Teruel and Pedro Martínez-Solano
- 458/2009 Un estudio sobre el perfil de hogares endeudados y sobreendeudados: el caso de los hogares vascos
Alazne Mujika Alberdi, Iñaki García Arrizabalaga y Juan José Gibaja Martíns
- 459/2009 Imposing monotonicity on outputs in parametric distance function estimations: with an application to the spanish educational production
Sergio Perelman and Daniel Santin
- 460/2009 Key issues when using tax data for concentration analysis: an application to the Spanish wealth tax
José M^a Durán-Cabré and Alejandro Esteller-Moré
- 461/2009 ¿Se está rompiendo el mercado español? Una aplicación del enfoque de feldstein –horioka
Saúl De Vicente Queijeiro, José Luis Pérez Rivero y María Rosalía Vicente Cuervo
- 462/2009 Financial condition, cost efficiency and the quality of local public services
Manuel A. Muñiz & José L. Zafra
- 463/2009 Including non-cognitive outputs in a multidimensional evaluation of education production: an international comparison
Marián García Valiñas & Manuel Antonio Muñiz Pérez
- 464/2009 A political look into budget deficits. The role of minority governments and oppositions
Albert Falcó-Gimeno & Ignacio Jurado
- 465/2009 La simulación del cuadro de mando integral. Una herramienta de aprendizaje en la materia de contabilidad de gestión
Elena Urquía Grande, Clara Isabel Muñoz Colomina y Elisa Isabel Cano Montero
- 466/2009 Análisis histórico de la importancia de la industria de la desalinización en España
Borja Montaña Sanz
- 467/2009 The dynamics of trade and innovation: a joint approach
Silviano Esteve-Pérez & Diego Rodríguez
- 468/2009 Measuring international reference-cycles
Sonia de Lucas Santos, Inmaculada Álvarez Ayuso & M^a Jesús Delgado Rodríguez
- 469/2009 Measuring quality of life in Spanish municipalities
Eduardo González Fidalgo, Ana Cárcaba García, Juan Ventura Victoria & Jesús García García
- 470/2009 ¿Cómo se valoran las acciones españolas: en el mercado de capitales doméstico o en el europeo?
Begoña Font Belaire y Alfredo Juan Grau Grau
- 471/2009 Patterns of e-commerce adoption and intensity. evidence for the european union-27
María Rosalía Vicente & Ana Jesús López

- 472/2009 On measuring the effect of demand uncertainty on costs: an application to port terminals
Ana Rodríguez-Álvarez, Beatriz Tovar & Alan Wall
- 473/2009 Order of market entry, market and technological evolution and firm competitive performance
Jaime Gomez, Gianvito Lanzolla & Juan Pablo Maicas
- 474/2009 La Unión Económica y Monetaria Europea en el proceso exportador de Castilla y León (1993-2007): un análisis de datos de panel
Almudena Martínez Campillo y M^a del Pilar Sierra Fernández
- 475/2009 Do process innovations boost SMEs productivity growth?
Juan A. Mañez, María E. Rochina Barrachina, Amparo Sanchis Llopis & Juan A. Sanchis Llopis
- 476/2009 Incertidumbre externa y elección del modo de entrada en el marco de la inversión directa en el exterior
Cristina López Duarte y Marta M^a Vidal Suárez
- 477/2009 Testing for structural breaks in factor loadings: an application to international business cycle
José Luis Cendejas Bueno, Sonia de Lucas Santos, Inmaculada Álvarez Ayuso & M^a Jesús Delgado Rodríguez
- 478/2009 ¿Esconde la rigidez de precios la existencia de colusión? El caso del mercado de carburantes en las Islas Canarias
Juan Luis Jiménez y Jordi Perdiguero
- 479/2009 The poni test with structural breaks
Antonio Aznar & María-Isabel Ayuda
- 480/2009 Accuracy and reliability of Spanish regional accounts (CRE-95)
Verónica Cañal Fernández
- 481/2009 Estimating regional variations of R&D effects on productivity growth by entropy econometrics
Esteban Fernández-Vázquez y Fernando Rubiera-Morollón
- 482/2009 Why do local governments privatize the provision of water services? Empirical evidence from Spain
Francisco González-Gómez, Andrés J. Picazo-Tadeo & Jorge Guardiola
- 483/2009 Assessing the regional digital divide across the European Union-27
María Rosalía Vicente & Ana Jesús López
- 484/2009 Measuring educational efficiency and its determinants in Spain with parametric distance functions
José Manuel Cordero Ferrera, Eva Crespo Cebada & Daniel Santín González
- 485/2009 Spatial analysis of public employment services in the Spanish provinces
Patricia Suárez Cano & Matías Mayor Fernández
- 486/2009 Trade effects of continental and intercontinental preferential trade agreements
Salvador Gil-Pareja, Rafael Llorca-Vivero & José Antonio Martínez-Serrano
- 487/2009 Testing the accuracy of DEA for measuring efficiency in education under endogeneity
Salvador Gil-Pareja, Rafael Llorca-Vivero & José Antonio Martínez-Serrano
- 488/2009 Measuring efficiency in primary health care: the effect of exogenous variables on results
José Manuel Cordero Ferrera, Eva Crespo Cebada & Luis R. Murillo Zamorano

- 489/2009 Capital structure determinants in growth firms accessing venture funding
Marina Balboa, José Martí & Álvaro Tresierra
- 490/2009 Determinants of debt maturity structure across firm size
Victor M. González
- 491/2009 Análisis del efecto de la aplicación de las NIIF en la valoración de las salidas a bolsa
Susana Álvarez Otero y Eduardo Rodríguez Enríquez
- 492/2009 An analysis of urban size and territorial location effects on employment probabilities: the spanish case
Ana Viñuela-Jiménez, Fernando Rubiera-Morollón & Begoña Cueto
- 493/2010 Determinantes de la estructura de los consejos de administración en España
Isabel Acero Fraile y Nuria Alcalde Fradejas
- 494/2010 Performance and completeness in repeated inter-firm relationships: the case of franchising
Vanessa Solis-Rodriguez & Manuel Gonzalez-Diaz
- 495/2010 A Revenue-Based Frontier Measure of Banking Competition
Santiago Carbó, David Humphrey & Francisco Rodríguez
- 496/2010 Categorical segregation in social networks
Antoni Rubí-Barceló
- 497/2010 Beneficios ambientales no comerciales de la directiva marco del agua en condiciones de escasez: análisis económico para el Guadalquivir
Julia Martin-Ortega, Giacomo Giannoccaro y Julio Berbel Vecino
- 498/2010 Monetary integration and risk diversification in eu-15 sovereign debt markets
Juncal Cuñado & Marta Gómez-Puig
- 499/2010 The Marshall Plan and the Spanish autarky: A welfare loss analysis
José Antonio Carrasco Gallego
- 500/2010 The role of learning in firm R&D persistence
Juan A. Mañez, María E. Rochina-Barrachina, Amparo Sanchis-Llopis & Juan A. Sanchis-Llopis
- 501/2010 Is venture capital more than just money?
Marina Balboa, José Martí & Nina Zieling
- 502/2010 On the effects of supply strategy on business performance: do the relationships among generic competitive objectives matter?
Javier González-Benito
- 503/2010 Corporate cash holding and firm value
Cristina Martínez-Sola, Pedro J. García-Teruel & Pedro Martínez-Solano
- 504/2010 El impuesto de flujos de caja de sociedades: una propuesta de base imponible y su aproximación contable en España
Lourdes Jerez Barroso y Joaquín Teixeira Quirós
- 505/2010 The effect of technological, commercial and human resources on the use of new technology
Jaime Gómez & Pilar Vargas

- 506/2010 ¿Cómo ha afectado la fiscalidad a la rentabilidad de la inversión en vivienda en España?
Un análisis para el periodo 1996 y 2007
Jorge Onrubia Fernández y María del Carmen Rodado Ruiz
- 507/2010 Modelización de flujos en el análisis input-output a partir de la teoría de redes
Ana Salomé García Muñiz
- 508/2010 Export-led-growth hypothesis revisited. a balance of payments approach for Argentina, Brazil,
Chile and Mexico
David Matesanz Gómez & Guadalupe Fugarolas Álvarez-Ude
- 509/2010 Realised hedge ratio properties, performance and implications for risk management: evidence
from the spanish ibex 35 spot and futures markets
David G McMillan & Raquel Quiroga García
- 510/2010 Do we sack the manager... or is it better not to? Evidence from Spanish professional football
Francisco González-Gómez, Andrés J. Picazo-Tadeo & Miguel A. García-Rubio
- 511/2010 Have Spanish port sector reforms during the last two decades been successful? A cost frontier
approach
Ana Rodríguez-Álvarez & Beatriz Tovar
- 512/2010 Size & Regional Distribution of Financial Behavior Patterns in Spain
Juan Antonio Maroto Acín, Pablo García Estévez & Salvador Roji Ferrari
- 513/2010 The impact of public reforms on the productivity of the Spanish ports: a parametric distance
function approach
Ramón Núñez-Sánchez & Pablo Coto-Millán
- 514/2010 Trade policy versus institutional trade barriers: an application using “good old” ols
Laura Márquez-Ramos, Inmaculada Martínez-Zarzoso & Celestino Suárez-Burguet
- 515/2010 The “Double Market” approach in venture capital and private equity activity: the case of Europe
Marina Balboa & José Martí
- 516/2010 International accounting differences and earnings smoothing in the banking industry
Marina Balboa, Germán López-Espinosa & Antonio Rubia
- 517/2010 Convergence in car prices among European countries
Simón Sosvilla-Rivero & Salvador Gil-Pareja
- 518/2010 Effects of process and product-oriented innovations on employee downsizing
José David Vicente-Lorente & José Ángel Zúñiga-Vicente
- 519/2010 Inequality, the politics of redistribution and the tax-mix
Jenny De Freitas
- 520/2010 Efectos del desajuste educativo sobre el rendimiento privado de la educación: un análisis para el
caso español (1995-2006)
Inés P. Murillo, Marta Rahona y M^a del Mar Salinas
- 521/2010 Structural breaks and real convergence in opec countries
Juncal Cuñado
- 522/2010 Human Capital, Geographical location and Policy Implications: The case of Romania
Jesús López-Rodríguez, Andres Faiña y Bolea Cosmin-Gabriel

- 523/2010 Organizational unlearning context fostering learning for customer capital through time: lessons from SMEs in the telecommunications industry
Anthony K. P. Wensley, Antonio Leal-Millán, Gabriel Cepeda-Carrión & Juan Gabriel Cegarra-Navarro
- 524/2010 The governance threshold in international trade flows
Marta Felis-Rota
- 525/2010 The intensive and extensive margins of trade decomposing exports growth differences across Spanish regions
Asier Minondo Uribe-Etxeberria & Francisco Requena Silvente