

**A NON-PARAMETRIC INDEPENDENCE TEST USING
PERMUTATION ENTROPY**

**MARIANO MATILLA-GARCÍA
MANUEL RUIZ MARÍN**

FUNDACIÓN DE LAS CAJAS DE AHORROS
DOCUMENTO DE TRABAJO
Nº 379/2008

De conformidad con la base quinta de la convocatoria del Programa de Estímulo a la Investigación, este trabajo ha sido sometido a evaluación externa anónima de especialistas cualificados a fin de contrastar su nivel técnico.

La serie **DOCUMENTOS DE TRABAJO** incluye avances y resultados de investigaciones dentro de los programas de la Fundación de las Cajas de Ahorros.
Las opiniones son responsabilidad de los autores.

A Non-Parametric Independence Test Using Permutation Entropy

Mariano Matilla-García
Economía Aplicada Cuantitativa I.
UNED

Manuel Ruiz Marín
Universidad Politécnica de Cartagena

ABSTRACT

In the present paper we construct a new, simple and powerful test for independence by using symbolic dynamics and permutation entropy as a measure of serial dependence. We also give the asymptotic distribution of an affine transformation of the permutation entropy under the null hypothesis of independence. An application to several daily financial time series illustrates our approach.

Introduction

Independence is one of the most valuable notions in econometrics, time series analysis and statistics due to the fact that most tests boil down to checking some sort of independence assumption. As a result, an extensive literature on how to test independence has arisen: Correlation tests (see King (1987) for a survey) are widely used, but they are not consistent against alternatives with zero autocorrelation. Examples of serially dependent processes that exhibit zero autocorrelation include autoregressive conditional heteroskedastic (ARCH), bilinear, non-linear moving average processes and iterative logistic maps. The nonparametric literature also contains a large number of serial independence test (see Dufour et al. (1982) for a bibliographical survey on permutation, sign and rank tests for independence). These test procedures work well under commonly used dependence structures, like ARMA models, but they also fail to detect subtle nonlinear underlying dependence structures. Needless to say that other nonparametric tests have emerged (Brock et al. (1996) and Pinkse (1998), among others) to cover these difficulties.

Serial independence has been increasingly studied by using entropy measures. These measures avoid restrictive parametric assumptions on the probability distribution generating the data, and they can capture the dependence present in a time series. As an outcome, establishing asymptotic distribution theory for smoothed nonparametric entropy measures of serial dependence has been so far challenging (see Hong and White (2005) and references therein). This line of research is narrowly connected with Information Theory: Jaynes (1957) introduced the maximum entropy principle (MEP) which determines the probability distribution of a random variable by maximizing the Shannon entropy, subject to certain moment conditions. This optimization principle is the same as the Kullback principle of minimizing the Kullback-Leibler relative entropy when one of the distributions is uniform. Jaynes' MEP was a turning point in the use of Shannon's entropy as a method of statistical inference.

The use of entropy has played a leading role as a measure of the dependence present in a time series in the last two decades. Joe (1989a, 1989b) considered a smoothed nonparametric entropy measure of multivariate dependence of an independent and identically distributed (i.i.d.) random vector. Granger and Lin (1994) proposed a normalized smoothed nonparametric entropy measure of serial dependence to identify

important lags in time series. Robinson (1991) developed a test for serial dependence using a modified entropy measure. Skaug and Tjøstheim (1993b, 1996) also considered a general class of smoothed density-based tests for serial dependence, which includes a test based on an entropy measure modified with a weight function.

As Granger and Lin (1994) pointed out, there is no asymptotic distribution theory available for smoothed nonparametric entropy measures of serial dependence. Consistency and in some cases convergence rates have been established, but asymptotic distributions for these entropy estimators are not available. Robinson (1991) first provided an asymptotic distribution theory for a smoothed nonparametric modified entropy measure of serial dependence, using a sample-splitting device. Granger et al. (2004) introduced a transformed metric entropy of dependence. Recently, the relevant investigation of Hong and White (2005) have provided, under certain assumptions, an asymptotic theory for a class of kernel-based smoothed nonparametric entropy estimators of serial dependence. They also show that their theory yields the limit distribution of the Granger and Lin's normalized entropy measure, which was previously unknown in the literature. Moreover, they develop a test that is asymptotically locally more powerful than Robinson's test. Nevertheless, most of the methods used to test for independence via an entropy measure of serial dependence strictly require a continuous distribution function of the unknown underlying data generating process and also need to estimate the density function with stochastic kernels. As a result, free-choice parameters are introduced. Another difficulty acknowledged by Hong and White (2005) is that the finite sample level of their own test (and in general of others entropy-based tests) differs from the asymptotic one; furthermore, asymptotic theory may not work well even for relatively large samples. This leads to implement, for each sample size, non-naive bootstrap procedures in order to correctly compute the test. Moreover, Hong and White need the time series X_t to have a compact support in the interval $[0,1]$, although this is not necessarily a restriction whenever the test is invariant under monotonous transformations of the series. Obtaining a compact support can always be ensured by a continuous strictly monotonous transformation such as the logistic function.

On the other hand, there are a number of other nonparametric tests for independence that avoid smoothed nonparametric estimation (Skaug and Tjøstheim (1993a); Delgado (1996); Hong (1998); and Hong (2000), among others; see also Tjøstheim (1996) for an excellent complete survey). These procedures are based on the empirical distribution

function or on the characteristic function. Importantly, some of these statistics are invariant to order preserving transformation; the distribution generating the data can be continuous or discrete; under certain conditions, the tests are distribution free. Unfortunately, some of these statistics have nonstandard limiting distribution. In these procedures, as in the case of tests based on smoothing estimation techniques, the test statistic is a distance between the joint density (or estimated joint distribution) and the marginal densities (or estimated marginal distributions).

In the present paper we take a different way, and we propose a new test for independence also based on Information Theory, but avoiding the potential disadvantage of depending on the choice of a smoothing number. More precisely, the absence of dependencies in the unknown underlying data generating process is studied via symbolic dynamics. Symbolic dynamics studies dynamical systems on the basis of the symbol sequences obtained for a suitable partition of the state space. The basic idea behind symbolic dynamics is to divide the phase space into a finite number of regions and label each region by an alphabetical letter. In this regard, symbolic dynamics is a coarse-grained description of dynamics. Some recent tests of independence are also a coarse-grained description of the underlying dynamic from which the data was generated. Even though coarse-grained methods lose a certain amount of detailed information, some essential features of the dynamics may be kept, e.g., periodicities and dependencies, among others. Symbolic dynamics has been used for investigation of non-linear dynamical systems (for an overview see Hao and Zheng, 1998). The process of symbolizing a time series is based upon the method of delay time coordinates, introduced by Takens (1981), in order to carry out the phase space reconstruction. Such a reconstruction is done from a scalar time series and all relevant components (relative to the underlying dynamics), such as dependencies, periodicity and complexity changes, have to be extracted from it.

Then, given a time series $\{X_t\}$, we study the dependence present in the series by translating the problem into symbolic dynamic and then, we use the entropy measure associated to these symbols to test the dependence present in the time series. More concretely, we study all $m!$ permutations (symbols) π of length m in the symmetric group S_m which are considered here as possible order types of m different numbers. Afterwards, we give the distribution followed by the mentioned symbols and define the entropy measure associated to them. This entropy measure is called permutation entropy (see Bandt and Pompe (2002) and Section 2 for a detailed explanation). Moreover under

the null of independence we prove that an affine transformation of the permutation entropy is asymptotically χ^2 distributed.

This allows us to construct a simple, consistent, easy to compute and powerful test for independence. The new test avoids restrictive assumptions on the probabilistic distribution generating the data. This fact allows the test to be of more general applicability. The distribution generating the data can be continuous or discrete. No moment is required; this is attractive for time series whose variances are infinite, as often arises in financial time series. It does not involve sample splitting (as Robinson (1991) requires) and thus, it does not need choosing tuning parameters that can lead to ambiguous conclusions when the test is used by two different practitioners. An interesting property of the proposed test is that it is invariant under monotonous (continuous or not) transformation of the data. Therefore, provided that $\{X_t\}$ is i.i.d. if and only if any series of its continuous monotonous transformation is i.i.d., the invariance property guarantees that no information is lost. Of important relevance for our test is that the finite sample level does not differ from the asymptotic level, and hence general applicability and reproducibility of the test is ensured.

The rest of the paper is structured as follows. In Section 1 we introduce the notation and several definitions in order to describe the symbolic dynamic representation methodology. The procedure is illustrated with an easy example. In Section 2 we give the construction of the independence test via permutation entropy and we prove that under the null of independence an affine transformation of the permutation entropy is asymptotically χ^2 distributed. Size and power of the new test are studied by Monte Carlo methods in Section 3. An empirical application for daily financial returns is reported in Section 5. Finally, we give the conclusions and final remarks in Section 4.

Definitions and Notation

In this section we give some definitions and we introduce the basic notation. We illustrate the definitions with a very easy example.

Let $\{X_t\}_{t \in I}$ be a real-valued time series. For a positive integer $m \geq 2$ we denote by S_m the symmetric group of order $m!$, that is the group formed by all the permutations of length m . Let $\pi_i = (i_1, \dots, i_m) \in S_m$. We will call an element π_i in the symmetric group S_m a symbol. The positive integer m is usually known as embedding dimension.

Now we define an ordinal pattern for a symbol $\pi_i = (i_1, \dots, i_m) \in S_m$ at a given time $t \in I$. To this end we consider that the time series is embedded in an m -dimensional space as follows:

$$X_m(t) = (X_{t+1}, X_{t+2}, \dots, X_{t+m}), t \in I$$

Then we say that t is of π_i -type if and only if $\pi_i = (i_1, i_2, \dots, i_m)$ is the unique symbol in the group satisfying the two following conditions:

- (a) $X_{t+i_1} \leq X_{t+i_2} \leq \dots \leq X_{t+i_m}$, and
- (b) $i_{s-1} < i_s$ if $X_{t+i_{s-1}} = X_{t+i_s}$

Condition (b) guaranties uniqueness of the symbol $\pi_i = (i_1, i_2, \dots, i_m)$. This is justified if the values of X_t have a continuous distribution so that equal values are very uncommon, with a theoretical probability of occurrence of 0.

Notice that for all t such that t is of π_i -type the m -history $X_m(t)$ is converted into a unique symbol π_i . This symbol π_i describes how the ordering of the dates $t+0 < t+1 < \dots < t+(m-1)$ is converted into the ordering of the values in the time series under scrutiny. In order to see this, the following example will help the reader.

Take as embedding dimension $m = 3$. Thus the symmetric group is

$$S_3 = \{(0,1,2), (0,2,1), (1,0,2), (1,2,0), (2,0,1), (2,1,0)\}.$$

Consider the finite time series of seven values

$$\{X_1 = 2, X_2 = 8, X_3 = 6, X_4 = 5, X_5 = 4, X_6 = 9, X_7 = 3\} \quad (1)$$

Then for $t = 2$ we have that $X_{t+2} = 5 < X_{t+1} = 6 < X_{t+0} = 8$ and therefore we have that the period $t=2$ is of $(2,1,0)$ -type.

Also, given a time series $\{X_t\}_{t \in I}$ and an embedding dimension m one could easily compute the relative frequency of a symbol $\pi_i = (i_1, \dots, i_m) \in S_m$ by:

$$p(\pi) \equiv p_\pi = \frac{\#\{t \in I \mid t \text{ is of } \pi\text{-type}\}}{|I| - m + 1} \quad (2)$$

where by $|I|$ we denote the cardinal of the set I .

Then for the time series given in (1) we have that the 3-history $X_3(1)=(X_1=2, X_2=8, X_3=6)$ is represented by the symbol $(0,2,1)$; $X_3(2)=(8,6,5)$ and $X_3(3)=(6,5,4)$ are represented by the symbol $(2,1,0)$; $X_3(4)=(5,4,9)$ is represented by the symbol $(1,0,2)$ and finally $X_3(5)=(4,9,3)$ is represented by the symbol $(2,0,1)$. Therefore we obtain that $p((0,1,2))=0=p((1,2,0))$, $p((0,2,1))=(1/5)$, $p((1,0,2))=(1/5)$, $p((2,0,1))=(1/5)$ and $p((2,1,0))=(2/5)$.

Now under this setting we can define the permutation entropy of a time series $\{X_t\}_{t \in I}$ for an embedding dimension $m \geq 2$. This entropy is defined as the Shannon's entropy of the $m!$ distinct symbols as follows:

$$h(m) = - \sum_{\pi_i \in S_m} p_{\pi_i} \ln(p_{\pi_i}) \quad (3)$$

Permutation entropy, $h(m)$, is the information contained in comparing m consecutive values of the time series. It is clear that $0 \leq h(m) \leq \ln(m!)$ where the lower bound is attained for an increasing or decreasing sequence of values, and the upper bound for a completely random system (i.i.d. sequence) where all $m!$ possible permutations appear with the same probability. For the time series given in (1) we have that $h(3) = -3(1/5)\ln((1/5)) - (2/5)\ln((2/5)) \approx 1.332179$.

Construction of the independence test

In this section we construct an independence test with all the machinery defined in Section 2. We also prove that an affine transformation of the permutation entropy defined in (3) is asymptotically χ^2 distributed.

Let $\{X_t\}_{t \in I}$ be a time series and m be a fixed embedding dimension. In order to construct a test for serial independence in $\{X_t\}_{t \in I}$, which is the aim of this paper, we consider the following null hypothesis:

$$H_0 = \{X_t\}_{t \in I} \text{ i.i.d.} \quad (4)$$

against any other alternative.

Now for a symbol $\pi_i = (i_1, \dots, i_m) \in S_m$ we define the random variable $Z_{\pi_i t}$ as follows:

$$Z_{\pi_i t} = \begin{cases} 1 & \text{if } X_{t+i_1} \leq X_{t+i_2} \leq \dots \leq X_{t+i_m} \\ 0 & \text{otherwise,} \end{cases} \quad (5)$$

that is, we have that $Z_{\pi_i t} = 1$ if and only if t is of π_i - type .

Then $Z_{\pi_i t}$ is a Bernoulli variable with probability of "success" p_{π_i} , where "success" means that t is of π_i - type . It is straightforward to see that

$$\sum_{i=1}^m p_{\pi_i} = 1 \quad (6)$$

Now assume that the set I is finite and of order T . Then we are interested in knowing how many t 's are of π_i - type for all symbol $\pi_i \in S_m$. Let us call $K=T-m+1$. In order to answer the question we construct the following variable

$$Y_{\pi_i} = \sum_{t=1}^K Z_{\pi_i t} \quad (7)$$

The variable Y_{π_i} can take the values $\{0, 1, 2, \dots, K\}$. Then it follows that the variable Y_{π_i} is the Binomial random variable

$$Y_{\pi_i} \approx B(K, p_{\pi_i}). \quad (8)$$

For each symbol $\pi_i \in S_m$ we are going to denote by

$$n_{\pi_i} = \#\{t \in I \mid t \text{ is of } \pi_i \text{ - type}\}. \quad (9)$$

for $i=1, 2, \dots, m!$. Then under the null H_0 , the joint probability density function of the $m!$

variables $(Y_{\pi_1}, Y_{\pi_2}, \dots, Y_{\pi_{m!}})$ is:

$$P(Y_{\pi_1} = a_1, Y_{\pi_2} = a_2, \dots, Y_{\pi_{m!}} = a_{m!}) = \frac{(a_1 + a_2 + \dots + a_{m!})!}{a_1! a_2! \dots a_{m!}!} p_{\pi_1}^{a_1} p_{\pi_2}^{a_2} \dots p_{\pi_{m!}}^{a_{m!}} \quad (10)$$

where $a_1 + a_2 + \dots + a_{m!} = K$. Consequently the joint distribution of the $m!$ variables

$(Y_{\pi_1}, Y_{\pi_2}, \dots, Y_{\pi_{m!}})$ is a multinomial distribution.

The likelihood function of the distribution (10) is:

$$L(p_{\pi_1}, p_{\pi_2}, \dots, p_{\pi_{m!}}) = \frac{K!}{n_{\pi_1}! n_{\pi_2}! \dots n_{\pi_{m!}}!} p_{\pi_1}^{n_{\pi_1}} p_{\pi_2}^{n_{\pi_2}} \dots p_{\pi_{m!}}^{n_{\pi_{m!}}} \quad (11)$$

and since $\sum_{i=1}^{m!} p_{\pi_i} = 1$ it follows that

$$L(p_{\pi_1}, p_{\pi_2}, \dots, p_{\pi_{m!}}) = \frac{K!}{n_{\pi_1}! n_{\pi_2}! \dots n_{\pi_{m!}}!} p_{\pi_1}^{n_{\pi_1}} p_{\pi_2}^{n_{\pi_2}} \dots (1 - p_{\pi_1} p_{\pi_2} \dots p_{\pi_{m!-1}})^{n_{\pi_{m!}}} \quad (12)$$

Then the logarithm of this likelihood function remains as

$$\begin{aligned} \text{Ln}(L(p_{\pi_1}, p_{\pi_2}, \dots, p_{\pi_{m!}})) &= \text{Ln}\left(\frac{K!}{n_{\pi_1}! n_{\pi_2}! \dots n_{\pi_{m!}}!}\right) + \sum_{i=1}^{m!-1} n_{\pi_i} \text{Ln}(p_{\pi_i}) \\ &\quad + n_{\pi_{m!}} \text{Ln}(1 - p_{\pi_1} p_{\pi_2} \dots p_{\pi_{m!-1}}). \end{aligned} \quad (13)$$

In order to obtain the maximum likelihood estimators \hat{p}_{π_i} of p_{π_i} for all $i = 1, 2, \dots, m!$, we solve the following equation

$$\frac{\partial \text{Ln}(L(p_{\pi_1}, p_{\pi_2}, \dots, p_{\pi_{m!}}))}{\partial p_{\pi_i}} = 0 \quad (14)$$

to get that

$$\hat{p}_{\pi_i} = \frac{n_{\pi_i}}{K}. \quad (15)$$

Then the likelihood ratio statistic is (see for example Lehmann, 1986):

$$\begin{aligned}
\lambda(Y) &= \frac{\frac{K!}{n_{\pi_1}!n_{\pi_2}!\dots n_{\pi_m}!} p_{\pi_1}^{n_{\pi_1}} p_{\pi_2}^{n_{\pi_2}} \dots p_{\pi_m}^{n_{\pi_m}}}{\frac{K}{n_{\pi_1}!n_{\pi_2}!\dots n_{\pi_m}!} \hat{p}_{\pi_1}^{n_{\pi_1}} \hat{p}_{\pi_2}^{n_{\pi_2}} \dots \hat{p}_{\pi_m}^{n_{\pi_m}}} = \frac{\prod_{i=1}^{m!} p_{\pi_i}^{n_{\pi_i}}}{\prod_{i=1}^{m!} \left(\frac{n_{\pi_i}}{K}\right)^{n_{\pi_i}}} = \\
&= K^{\sum_{i=1}^{m!} n_{\pi_i}} \prod_{i=1}^{m!} \left(\frac{p_{\pi_i}}{n_{\pi_i}}\right)^{n_{\pi_i}} = K^K \prod_{i=1}^{m!} \left(\frac{p_{\pi_i}}{n_{\pi_i}}\right)^{n_{\pi_i}}. \tag{16}
\end{aligned}$$

On the other hand, $G(m) = -2Ln(\lambda(Y))$ asymptotically follows a Chi-squared distribution with $m!-1$ degrees of freedom (see for instance Lehmann, 1986). Hence

$$G(m) = -2Ln(\lambda(Y)) = -2\left[KLn(K) + \sum_{i=1}^{m!} n_{\pi_i} Ln\left(\frac{p_{\pi_i}}{n_{\pi_i}}\right)\right] \sim \chi_{m!-1}^2 \tag{17}$$

Now under the null H_0 it is clear that $p_{\pi_i} = \frac{1}{m!}$ for all $i=1,2,\dots,m!$. Then it follows that

$$\begin{aligned}
G(m) &= -2K\left[Ln(K) + \sum_{i=1}^{m!} \frac{n_{\pi_i}}{K} Ln\left(\frac{p_{\pi_i}}{n_{\pi_i}}\right)\right] \\
&= -2K\left[Ln(K) + \sum_{i=1}^{m!} \frac{n_{\pi_i}}{K} \left(Ln\left(\frac{1}{m!}\right) - Ln(n_{\pi_i})\right)\right] \\
&= -2K\left[Ln(K) + \sum_{i=1}^{m!} \frac{n_{\pi_i}}{K} \left(Ln\left(\frac{1}{m!}\right) - Ln\left(\frac{n_{\pi_i}}{K}\right) - Ln(K)\right)\right] \tag{18}
\end{aligned}$$

Now taking into account that $h(m) = -\sum_{\pi_i \in S_m} p_{\pi_i} \ln(p_{\pi_i}) = -\sum_{i=1}^{m!} \frac{n_{\pi_i}}{K} \ln\left(\frac{n_{\pi_i}}{K}\right)$ we have that

$$G(m) = -2K\left[Ln\left(\frac{1}{m!}\right) + h(m)\right] = -2(K)[h(m) - Ln(m!)] = 2K[Ln(m!) - h(m)]. \tag{19}$$

Therefore we have proved the following result.

Theorem 3.1. Let $\{X_t\}_{t \in I}$ be a time series with $|I|=T$. Denote by $h(m)$ the permutation entropy defined in (3) for a fixed embedding dimension $m > 2$, with $m \in \mathbb{N}$. If the time series $\{X_t\}_{t \in I}$ is i.i.d., then the affine transformation of the permutation entropy

$$G(m) = 2(T - m + 1)[Ln(m!) - h(m)] \quad (20)$$

is asymptotically χ^2_{m-1} distributed.

Let α be a real number with $0 \leq \alpha \leq 1$. Let χ^2_α be such that

$$P(\chi^2_{m-1} > \chi^2_\alpha) = \alpha.$$

Then to test

$$H_0 : \{X_t\}_{t \in I} \quad i.i.d.$$

the decision rule in the application of the $G(m)$ test at a $100(1-\alpha)\%$ confidence level is:

$$\begin{array}{ll} \text{If } \chi^2_{1-\frac{\alpha}{2}} \leq G(m) \leq \chi^2_{\frac{\alpha}{2}} & \text{Accept } H_0 \\ \text{Otherwise} & \text{Reject } H_0 \end{array} \quad (21)$$

It is important to note, from a practical point of view, that the researcher has to decide upon the embedding dimension m in order to compute permutation entropy and therefore to calculate the $G(m)$ statistic. Fortunately, this decision can be easily conducted. Note that T should be larger than the number of permutation symbols $m!$ in order to have at least the same number of m -histories as possible symbols (events) $\pi_i \in S_m$. When the χ^2 is applied in practice, and all the expected frequencies are ≥ 5 , the limiting tabulated χ^2 distribution gives, as a rule, the value χ^2_α with an approximation sufficient for ordinary purposes. For this reason, we require to work with data sets containing at least five times the number of possible events. For instance, a data set of 200 observations is enough for computing $G(4)$ because 24 symbols are obtained for m

= 4; similarly, 600 observations is the smallest data set that can be considered for an embedding dimension of $m=5$ since in this case 120 symbols might be found. Beyond embedding dimension of $m=6$, data requirements are unrealistic for real economic time series, so we do not use such dimensions. Conversely, for $m=3$ only six possible symbols are analyzed, and then the degree of information capture by these symbols is very limited and therefore we do not suggest the use of $m=3$. Through this paper we compute permutation entropy in a manner that the researcher has not to choose the embedding dimension: For a given data set of T observations, the embedding dimension will be the largest m that satisfies $5m! \leq T$ with $m=2,3,4,\dots$. For example, for case of $T = 500$, we set¹ $m=4$.

Finite-Sample Behavior

Various time series were generated in order to test the size and power of the $G(m)$ test. We have studied the new test for three embedding dimensions: $m=4,5$ and 6 , accordingly, sample sizes of $T=120, T=600$ and $T=3600$ have been considered, respectively. In order to conduct size experiments the analyzed models have been the following:

1. A Gaussian distribution, zero mean and unit variance, $N(0,1)$
2. A Uniform distribution on the $(0,1)$ interval, $U(0,1)$
3. A Chi-square distribution with 4 degrees of freedom, χ^2
4. A Student's t-distribution with 4degrees of freedom, t_4

Each process was repeated 2000 times and the proportion of rejections of the i.i.d. null was calculated using a nominal size of 1, 5 and 10 per cent.

Table 1 reports the empirical size of our test under the four i.i.d. models. As it can be seen, even for the smallest considered data set (that is, for $m=4$ where $T=120=5m!$), the test is reasonably well sized, with rejection frequencies occurring at approximately their nominal rates. The finite sample level does not differ from the asymptotic level. Furthermore, test's size improves as T increases ($T>5m!$). The same behavior is

¹ Note that if T is too large ($T>25.200$), then the selected m will be too large as well (indeed $m>7$), and hence the procedure will be too expensive in terms of computational time. For this reason, and because of the usual length of economic time series, we recomend to operate with $m=6$ for $T>3600$

obtained (although not reported here for sake of space) for $m=5$ and $m=6$. These observations are relevant because as Hong and White (2005) note the finite sample level of their own test (and in general of the previous entropy-based tests) differs from the asymptotic one, not only for small samples but also for large samples. As a result, the $G(m)$ test does not need computing non-naive bootstrap procedures in order to compute the test. These results also show that the new test behaves well when facing several random distributions with different shaped probability density functions such as fat-tailed, either symmetric or not, and infinitely fat-tailed like the uniform distribution.

Table 1. Size of the $G(m)$ test

	$G(4)$								
	$T = 120$			$T = 240$			$T = 580$		
	1%	5%	10%	1%	5%	10%	1%	5%	10%
$N(0, 1)$	1,90	5,45	10,49	1.65	5.40	10.40	1.60	4.49	10.22
$U(0, 1)$	2,00	6,15	10,32	1.40	4.45	10.21	1.81	5.10	10.15
χ_4^2	2,05	6,14	10,43	1.85	4.95	10.10	1.51	4.67	10.03
t_4	1,85	5,60	10,16	1.62	4.30	9.51	1.12	5.00	9.63

Notes: For each distribution, 2000 simulation iterations for $G(m)$ test have been computed.

On the other hand, in order to test for the power of the $G(m)$ test, we have considered the same data generating processes (DGPs) as in Granger and Lin (1994) because of its rich nonlinear variety. The models are the following:

$$\begin{aligned}
\text{DGP 1} \quad & X_t = \varepsilon_t + 0.8\varepsilon_{t-1}^2, \\
\text{DGP 2} \quad & X_t = \varepsilon_t + 0.8\varepsilon_{t-2}^2, \\
\text{DGP 3} \quad & X_t = \varepsilon_t + 0.8\varepsilon_{t-3}^2, \\
\text{DGP 4} \quad & X_t = \varepsilon_t + 0.8\varepsilon_{t-1}^2 + 0.8\varepsilon_{t-2}^2 + 0.8\varepsilon_{t-3}^2, \\
\text{DGP 5} \quad & X_t = |X_{t-1}|^{0.8} + \varepsilon_t, \\
\text{DGP 6} \quad & X_t = \text{sign}(X_{t-1}) + \varepsilon_t, \\
\text{DGP 7} \quad & X_t = 0.8X_{t-1} + \varepsilon_t, \\
\text{DGP 8} \quad & X_t = X_{t-1} + \varepsilon_t, \\
\text{DGP 9} \quad & X_t = 0.6\varepsilon_{t-1}X_{t-2} + \varepsilon_t, \\
\text{DGP 10} \quad & X_t = 4X_{t-1}(1 - X_t)
\end{aligned}$$

where $x_t \square i.i.d. N(0,1)$. For the simulations that follow, we increase Granger and Lin's (1994) DGPs with the following process:

$$\text{DGP 11} \quad X_t = \sqrt{h_t} \varepsilon_t, h_t = (1 + 0.5h_{t-1}^2)$$

For each DGP, we first generate $T+200$ observations and then discard the first 200 to mitigate the impact of initial values. DGP's 1-4 are MA processes of order 1,2,3 and 3 respectively. DGP's 5-7 are AR(1) autoregressions with various decaying memory properties. DGP 8 is a simple I(1) with persistent memory and DGP 9 is bilinear with white noise characteristics. DGP 10 is the logistic function generating chaotic dynamics. DGP 11 is a ARCH(1) process commonly employed in financial applications.

We shall use these models to evaluate the power of our non-parametric dependence test. A minimum of 2000 Monte Carlo replications from each model are computed. Code was written in Mathematica 5.2 programming language.

Table 2 reports the empirical rejection rates of $G(4)$, $G(5)$, $G(6)$ under DGPs 1-11, for $T=120$, $T=600$ and $T=3600$, respectively. As we can see, the power of our test against dependent models (either linear or non-linear) is near 100% when $T=3600$. For $T=600$ and regarding the nonlinear moving average processes (DGPs 1-4), the power of the $G(m)$ test is significantly high at all levels, except, perhaps, for the DGP 3 at 1%. This test's performance does not hold for the smallest data set. Concerning the AR(1) processes (DGPs 5-7) the power of the test for $T=600$ is very close to 100% at all levels, while for $T=120$ the results are not so optimistic. The behavior of the test, in terms of power, in presence of an I(1) process with persistent memory (DGP 8) is near 100%, regardless the sample size. The performance of the test for the bilinear with white noise (DGP 9) is very high at all levels, except for the case of $T=120$. As expected, the chaotic nature of process (DGP 10) is always capture regardless the sample size. Finally, for the ARCH model (DGP 11), our test only performs well for the largest sample size.

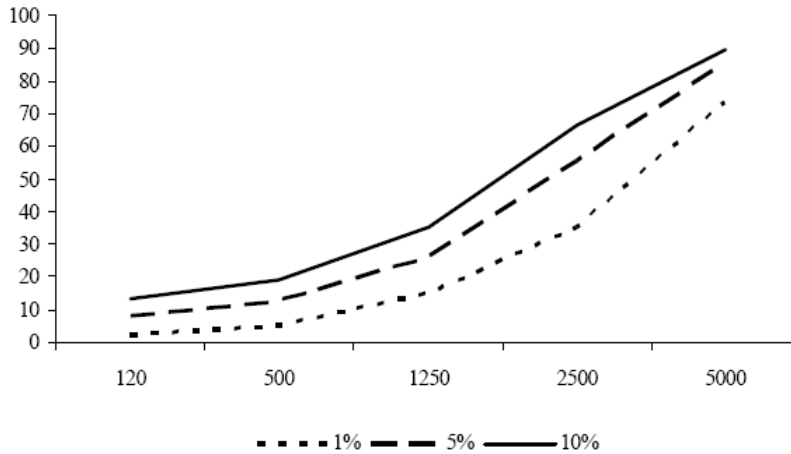
Table 2. Power of the $G(m)$ test

	$G(4)$			$G(5)$			$G(6)$		
	$T = 120$			$T = 600$			$T = 3600$		
	1%	5%	10%	1%	5%	10%	1%	5%	10%
DGP 1	15,65	29,5	38,5	97,50	99,30	99,49	100	100	100
DGP 2	5,55	16,10	22,10	78,95	91,50	94,15	100	100	100
DGP 3	3,15	10,40	15,7	47,80	67,05	76,15	100	100	100
DGP 4	6,00	18,05	24,10	84,50	92,55	96,05	100	100	100
DGP 5	38,55	59,65	65,30	100	100	100	100	100	100
DGP 6	19,65	35,25	44,25	99,55	99,80	99,90	100	100	100
DGP 7	74,20	86,00	89,75	100	100	100	100	100	100
DGP 8	94,85	98,05	98,15	100	100	100	100	100	100
DGP 9	3,65	10,55	16,85	77,00	89,00	100	100	100	100
DGP 10	100	100	100	100	100	100	100	100	100
DGP 11	2,60	8,20	13,15	11,50	26,15	35,20	93,11	97,81	100

Notes: For each DGP, 2000 simulation iterations for $G(m)$ test have been computed

Two compatible reasons can explain why DGP 11 is not captured by $G(4)$ and $G(5)$. One relies on the fact that we are computing the tests over small sample sizes. The other one is that the number of analyzed symbols (24 symbols for $m=4$, and 120 symbols for $m=5$) is not enough to capture the complexity of ARCH processes. Figure 1 shows the power of $G(4)$ test for increasing sample sizes (T goes from 120 to 5000). By inspection of Figure 1 it is evident that valuable powers are attained for large sample sizes at all nominal levels². Sample sizes greater than 5000 are needed for $G(4)$ to obtain, at all nominal levels, powers larger than 75%. This fact underlines the central role played by the number of analyzed symbols for a given data set. In this regard, observe from Table 2 that the power against DGP 11 is almost 100 per cent for $T=3600$ and $m=6$. Note that this power's gain is obtained via rising the number of symbols with which the data set is analyzed, and not by increasing the sample size (T). Therefore, even though the sample size is certainly important for $G(m)$ test's power, it is more relevant the role played by the number of symbols used for detecting dependence.

² The same occurs for $m=5$.



Powers of $G(4)$ test for increasing sample sizes
 $T : 120 - 5000$

In comparison with other tests for independence based also on entropy concepts (Robinson 1991; Skaug and Tjøstheim 1996; Hong and White 2005), the main advantages of our test are the following: (a) It does not require to selected many free parameters, in fact, the unique free parameter is the number of symbols ($m!$) upon which permutation entropy is computed. (b) The test is well defined for both continuous and discrete processes. (c) The test is invariant under monotonous (either linear or nonlinear) transformation of the data set. Invariance is important since otherwise inadvertent transformations would produce different levels of dependence. Notice that this property is essential when testing independence in time series. For instance in Hong and White's test, in order to ensure that the support of the time series belongs to the compact interval $[0,1]$ they make a logistic transformation (monotonous) of the data. Therefore if the test is invariant under monotonous transformations, the condition on the support is not a restriction. (d) $G(m)$ test does not need any estimation of the density function nor the use of stochastic kernels for its computation, something that does not occur with most of the entropy-based tests for serial dependence.

Advantages (a)-(d) make the $G(m)$ test not only more general and less dependent on free choice parameters, but also easier to compute and shorter in computing running time.

Empirical Application

This section illustrates our test by using the $G(m)$ statistic to explore possible dependences in the following well studied daily financial returns: Dow Jones Industrial Average (DJIA) and three exchange rate time series, namely, the French franc, the German mark and the Canadian dollar, all against the U.S. dollar. Daily returns of Dow Jones Industrial Average (DJIA) ranges from January 3, 1928 to October 18, 2000 while daily exchange rate's returns go from January 4, 1971 to December 31, 1998. Returns, R_t , are defined as the difference of logarithm of the stock price index (or of the corresponding exchange rate) ($R_t = \Delta \ln P_t$), where P_t is the daily closing price index (or the closing exchange rate). We are interested in testing independence³ of the R_t as a way of examining the correctness of the random walk hypothesis for the logged prices (or for the logged the three exchange rates).

We also test for independence in various power transformed absolute returns series, $|R_t|^d$, $d=1/2, 1, 1.5$ and 2 , since it is well known (see Ding et al., 1993) that proxy volatility measures, as power transformations of financial returns, have higher autocorrelation compared to the return series.

Given that $T > 3600$ for all data sets, we have compute the $G(m)$ test for $m=6$. Results for the four data sets are reported in Table 3. As can be observed, as regards the DJIA returns, the null of independence is rejected at 1 per cent significance level; however, independence is not rejected for the transformed absolute returns. Exchange rate's returns behave similarly, independence is rejected at 1 per cent; however, now the test rejects the null at 1% level, for all absolute return's power transformations. All these results indicate that the DJIA daily stock prices and the three exchange rate time series do not follow a random walk. As regarding volatility, measured via the proxy variables $|R_t|^d$, these results point out that, while rejection of the random walk hypothesis for the three exchange rate returns might be due to potential strong volatility clustering, this is not the case for the DJIA since independence cannot be rejected for absolute power

³ The exchange rate time series under study in this section have been recently analyzed looking for chaotic behavior in Fernández et al. (2005); the same happens for the DJIA data set, see Shintani and Linton (2004).

transformations. It is also interesting to comment that the same conclusions are obtained by fixing $m=4$ and $m=5$ ⁴.

Table 3. $G(6)$ Test for Independence for several financial returns

DJIA	$\alpha = 1\%$	$\alpha = 5\%$	$\alpha = 10\%$	$G(6)$
R_t	Reject	Reject	Reject	2151.01
$ R_t ^{0.5}$	Accept	Accept	Accept	715.445
$ R_t $	Accept	Accept	Accept	715.445
$ R_t ^{1.5}$	Accept	Accept	Accept	715.445
$ R_t ^2$	Accept	Accept	Accept	715.445
French frank	$\alpha = 1\%$	$\alpha = 5\%$	$\alpha = 10\%$	$G(6)$
R_t	Reject	Reject	Reject	3597.55
$ R_t ^{0.5}$	Reject	Reject	Reject	1434.57
$ R_t $	Reject	Reject	Reject	1434.57
$ R_t ^{1.5}$	Reject	Reject	Reject	1434.57
$ R_t ^2$	Reject	Reject	Reject	1434.57
German mark	$\alpha = 1\%$	$\alpha = 5\%$	$\alpha = 10\%$	$G(6)$
R_t	Reject	Reject	Reject	3480
$ R_t ^{0.5}$	Reject	Reject	Reject	1427.62
$ R_t $	Reject	Reject	Reject	1427.62
$ R_t ^{1.5}$	Reject	Reject	Reject	1427.62
$ R_t ^2$	Reject	Reject	Reject	1427.62
Canadian dollar	$\alpha = 1\%$	$\alpha = 5\%$	$\alpha = 10\%$	$G(6)$
R_t	Reject	Reject	Reject	3980.14
$ R_t ^{0.5}$	Reject	Reject	Reject	2994.45
$ R_t $	Reject	Reject	Reject	2994.45
$ R_t ^{1.5}$	Reject	Reject	Reject	2994.45
$ R_t ^2$	Reject	Reject	Reject	2994.45

Note: The critical values for the $G(6)$ test at an $\alpha = 1\%$, 5% and 10% are:

$\chi_{0.005}^2 = 782.491$; $\chi_{0.95}^2 = 657.783$; $\chi_{0.025}^2 = 795.2$; $\chi_{0.975}^2 = 646.558$; $\chi_{0.005}^2 = 820.491$; $\chi_{0.995}^2 = 625.08$

⁴ Although not reported in the paper, these results are available from the authors.

Conclusions

From a general and wide perspective, this paper expands the interrelationship between Information Theory, statistics and inference, and the research line based on entropy concepts. Particularly, the present paper attempts to analyze limited and noisy data using minimal assumptions. In this fashion, we have proposed a new test for independence which relies on the concept of entropy. This concept, as presented here, is formulated in terms of symbols obtained from ordinal patterns found in a time series. In other words, we do not work with the actual observed values which are real numbers; rather we take the number of order patterns in the observed series as a measure of its complexity. Although this methodology loses a certain amount of detailed information, some essential features of the dynamics are kept, among others, dependence or independence of the data generating process.

Independence is one of the most valuable notions in statistics and econometrics, therefore testing for serial independence is crucial. In this regard and in connection with entropy econometrics, certain amount of significant research has tested for independence by using smoothed nonparametric entropy measures. Robinson (1991), Skaug and Tjøstheim (1996), and recently Hong and White (2005) have provided an asymptotic distribution theory for certain entropy measures, and as a result they have obtained some test for independence. These tests rely on kernel-based estimation techniques, and hence kernels and bandwidths have to be freely selected by the researcher. Most importantly, the finite sample level of these tests differs from the asymptotic one; furthermore, as Hong and White point out, asymptotic theory may not work well even for relatively large samples. Also of relevant importance is that all known entropy-based tests for independence make several assumptions about the data generating process that restrict the general applicability of the test.

As has been shown, this paper provides the asymptotic distribution of an affine transformation of the permutation entropy under the null of independence. The theoretical distributions allows us to construct a test for independence. Importantly for our test, the finite sample level does not differ from the asymptotic level, which is an interesting property that guaranties general applicability and reproducibility of the test. Moreover, the test is invariant under monotonuous transformations of data. Invariance makes our procedure very attractive in practice. Most importantly, our test makes no

assumptions about the continuous or discrete nature of the data generating process and of its marginal densities. In sum, the $G(m)$ test only needs X_t be a real-valued time series, and hence it is more general than other entropy-based tests. Two final advantages are its computational simplicity and its short running computational times.

An empirical application to daily Dow Jones Industrial Average price index and to three daily exchange rate returns has illustrated our approach by testing the random walk hypothesis on these prices.

References

- Barnett, W.A., Gallant, A.R, Hinich, M.J., Jungeils, J.A, Kaplan, D.T. and Jensen, M.J. 1997. A single blind controlled competition among tests for nonlinearity and chaos. *Journal of Econometrics*, 82, 157-192.
- Brock, W.A., Dechert, W., Scheinkman, J.A and LeBaron, B, 1996. A test for independence based on the Correlation Dimension. *Econometric Reviews*, 15, 197-235.
- Cameron, A Colin & Trivedi, Pravin K. 1993. Tests of Independence in Parametric Models with Applications and Illustrations, *Journal of Business & Economic Statistics*, 11(1), 29-43.
- Ding Z, Granger CWJ, Engle RF. 1993. A long memory property of stock market returns and a new model. *Journal of Empirical Finance* 1: 83--106.
- Fernández-Rodríguez F., Sosvilla-Rivero, S. and Andrada-Félix, J. 2005. Testing chaotic dynamics via Lyapunov Exponents. *Journal of Applied Econometrics*, 20: 901-930.
- Granger, C.W.J. and Lin J.L. 1994. Using the mutual information coefficient to identify lags in nonlinear models. *Journal of Time Series analysis*, 1, 157-165.
- Hao, B. and Zheng, W. 1998. *Applied Symbolic Dynamics and Chaos*. World Scientific, Singapore.
- Hoeffding, W. 1948. A non-parametric test of independence. *Annals of Mathematical Statistics* 19, 546-557
- Hong, Y. and White, H. 2005. Asymptotic distribution theory for nonparametric entropy measures of serial dependence. *Econometrica* 73, 837--901.
- Jaynes, E.T. (1957). Information theory and statistical mechanics. *Phys. Rev.* 106, 620-630.
- Joe, H. (1989a): Relative Entropy Measures of Multivariate Dependence. *Journal of the American Statistical Association*, 84, 157--164.
- Joe, H.(1989b): Estimation of Entropy and Other Functionals of a Multivariate Density, *Annals of the Institute of Statistical Mathematics*. 41, 683--697.
- Johnson, D. and McClelland, R. 1998, A general dependence test and applications. *Journal of Applied Econometrics*, 13, 627-644.
- Lehmann, E.L. 1986. *Testing Statistical hypothesis*. John Wiley & Sons, New York.
- Pinkse, J. 1998. A consistent nonparametric test for serial independence. *Journal of Econometrics*, 84, 205-231.
- Robinson, P.M. 1991. Consistent nonparametric Entropy-Based testing. *Review of Economic Studies*, 58, 437-453.

Shintani, M. and Linton, O. 2004. Nonparametric neural network estimation of Lyapunov exponents and a direct test for chaos. *Journal of Econometrics*, 120, 1-33.

Skaug H. J. and Tjøstheim D. (1993) Nonparametric Tests of Serial Independence. *Developments in Time Series Analysis: The Priestley Birthday Volume*, ed. by T. Subba Rao. London: Chapman & Hall, 207--229.

Skaug H. J. and Tjøstheim D. (1996): Measures of Distance Between Densities with Application to Testing for Serial Independence. *Time Series Analysis in Memory of E. J. Hannan*, ed. by P. Robinson and M. Rosenblatt. New York Springer-Verlag, 363--377.

Takens F. 1981. Detecting strange attractors in turbulence. In *Dynamical Systems and Turbulence*, Rand D, Young L. (eds). Springer-Verlag: Berlin.

Tjøstheim, D. 1996, Measures of dependence and tests for independence, *Statistics*, 28, 249-284.

FUNDACIÓN DE LAS CAJAS DE AHORROS

DOCUMENTOS DE TRABAJO

Últimos números publicados

- 159/2000 Participación privada en la construcción y explotación de carreteras de peaje
Ginés de Rus, Manuel Romero y Lourdes Trujillo
- 160/2000 Errores y posibles soluciones en la aplicación del *Value at Risk*
Mariano González Sánchez
- 161/2000 Tax neutrality on saving assets. The spanish case before and after the tax reform
Cristina Ruza y de Paz-Curbera
- 162/2000 Private rates of return to human capital in Spain: new evidence
F. Barceinas, J. Oliver-Alonso, J.L. Raymond y J.L. Roig-Sabaté
- 163/2000 El control interno del riesgo. Una propuesta de sistema de límites
riesgo neutral
Mariano González Sánchez
- 164/2001 La evolución de las políticas de gasto de las Administraciones Públicas en los años 90
Alfonso Utrilla de la Hoz y Carmen Pérez Esparrells
- 165/2001 Bank cost efficiency and output specification
Emili Tortosa-Ausina
- 166/2001 Recent trends in Spanish income distribution: A robust picture of falling income inequality
Josep Oliver-Alonso, Xavier Ramos y José Luis Raymond-Bara
- 167/2001 Efectos redistributivos y sobre el bienestar social del tratamiento de las cargas familiares en
el nuevo IRPF
Nuria Badenes Plá, Julio López Laborda, Jorge Onrubia Fernández
- 168/2001 The Effects of Bank Debt on Financial Structure of Small and Medium Firms in some Euro-
pean Countries
Mónica Melle-Hernández
- 169/2001 La política de cohesión de la UE ampliada: la perspectiva de España
Ismael Sanz Labrador
- 170/2002 Riesgo de liquidez de Mercado
Mariano González Sánchez
- 171/2002 Los costes de administración para el afiliado en los sistemas de pensiones basados en cuentas
de capitalización individual: medida y comparación internacional.
José Enrique Devesa Carpio, Rosa Rodríguez Barrera, Carlos Vidal Meliá
- 172/2002 La encuesta continua de presupuestos familiares (1985-1996): descripción, representatividad
y propuestas de metodología para la explotación de la información de los ingresos y el gasto.
Llorenç Pou, Joaquín Alegre
- 173/2002 Modelos paramétricos y no paramétricos en problemas de concesión de tarjetas de credito.
Rosa Puertas, María Bonilla, Ignacio Olmeda

- 174/2002 Mercado único, comercio intra-industrial y costes de ajuste en las manufacturas españolas.
José Vicente Blanes Cristóbal
- 175/2003 La Administración tributaria en España. Un análisis de la gestión a través de los ingresos y de los gastos.
Juan de Dios Jiménez Aguilera, Pedro Enrique Barrilao González
- 176/2003 The Falling Share of Cash Payments in Spain.
Santiago Carbó Valverde, Rafael López del Paso, David B. Humphrey
Publicado en "Moneda y Crédito" nº 217, pags. 167-189.
- 177/2003 Effects of ATMs and Electronic Payments on Banking Costs: The Spanish Case.
Santiago Carbó Valverde, Rafael López del Paso, David B. Humphrey
- 178/2003 Factors explaining the interest margin in the banking sectors of the European Union.
Joaquín Maudos y Juan Fernández Guevara
- 179/2003 Los planes de stock options para directivos y consejeros y su valoración por el mercado de valores en España.
Mónica Melle Hernández
- 180/2003 Ownership and Performance in Europe and US Banking – A comparison of Commercial, Co-operative & Savings Banks.
Yener Altunbas, Santiago Carbó y Phil Molyneux
- 181/2003 The Euro effect on the integration of the European stock markets.
Mónica Melle Hernández
- 182/2004 In search of complementarity in the innovation strategy: international R&D and external knowledge acquisition.
Bruno Cassiman, Reinhilde Veugelers
- 183/2004 Fijación de precios en el sector público: una aplicación para el servicio municipal de suministro de agua.
M^a Ángeles García Valiñas
- 184/2004 Estimación de la economía sumergida en España: un modelo estructural de variables latentes.
Ángel Alañón Pardo, Miguel Gómez de Antonio
- 185/2004 Causas políticas y consecuencias sociales de la corrupción.
Joan Oriol Prats Cabrera
- 186/2004 Loan bankers' decisions and sensitivity to the audit report using the belief revision model.
Andrés Guiral Contreras and José A. Gonzalo Angulo
- 187/2004 El modelo de Black, Derman y Toy en la práctica. Aplicación al mercado español.
Marta Tolentino García-Abadillo y Antonio Díaz Pérez
- 188/2004 Does market competition make banks perform well?.
Mónica Melle
- 189/2004 Efficiency differences among banks: external, technical, internal, and managerial
Santiago Carbó Valverde, David B. Humphrey y Rafael López del Paso

- 190/2004 Una aproximación al análisis de los costes de la esquizofrenia en España: los modelos jerárquicos bayesianos
F. J. Vázquez-Polo, M. A. Negrín, J. M. Cavasés, E. Sánchez y grupo RIRAG
- 191/2004 Environmental proactivity and business performance: an empirical analysis
Javier González-Benito y Óscar González-Benito
- 192/2004 Economic risk to beneficiaries in notional defined contribution accounts (NDCs)
Carlos Vidal-Meliá, Inmaculada Domínguez-Fabian y José Enrique Devesa-Carpio
- 193/2004 Sources of efficiency gains in port reform: non parametric malmquist decomposition tfp index for Mexico
Antonio Estache, Beatriz Tovar de la Fé y Lourdes Trujillo
- 194/2004 Persistencia de resultados en los fondos de inversión españoles
Alfredo Ciriaco Fernández y Rafael Santamaría Aquilué
- 195/2005 El modelo de revisión de creencias como aproximación psicológica a la formación del juicio del auditor sobre la gestión continuada
Andrés Guiral Contreras y Francisco Esteso Sánchez
- 196/2005 La nueva financiación sanitaria en España: descentralización y prospectiva
David Cantarero Prieto
- 197/2005 A cointegration analysis of the Long-Run supply response of Spanish agriculture to the common agricultural policy
José A. Mendez, Ricardo Mora y Carlos San Juan
- 198/2005 ¿Refleja la estructura temporal de los tipos de interés del mercado español preferencia por la liquidez?
Magdalena Massot Perelló y Juan M. Nave
- 199/2005 Análisis de impacto de los Fondos Estructurales Europeos recibidos por una economía regional: Un enfoque a través de Matrices de Contabilidad Social
M. Carmen Lima y M. Alejandro Cardenete
- 200/2005 Does the development of non-cash payments affect monetary policy transmission?
Santiago Carbó Valverde y Rafael López del Paso
- 201/2005 Firm and time varying technical and allocative efficiency: an application for port cargo handling firms
Ana Rodríguez-Álvarez, Beatriz Tovar de la Fe y Lourdes Trujillo
- 202/2005 Contractual complexity in strategic alliances
Jeffrey J. Reuer y Africa Ariño
- 203/2005 Factores determinantes de la evolución del empleo en las empresas adquiridas por opa
Nuria Alcalde Fradejas y Inés Pérez-Soba Aguilar
- 204/2005 Nonlinear Forecasting in Economics: a comparison between Comprehension Approach versus Learning Approach. An Application to Spanish Time Series
Elena Olmedo, Juan M. Valderas, Ricardo Gimeno and Lorenzo Escot

- 205/2005 Precio de la tierra con presión urbana: un modelo para España
Esther Decimavilla, Carlos San Juan y Stefan Sperlich
- 206/2005 Interregional migration in Spain: a semiparametric analysis
Adolfo Maza y José Villaverde
- 207/2005 Productivity growth in European banking
Carmen Murillo-Melchor, José Manuel Pastor y Emili Tortosa-Ausina
- 208/2005 Explaining Bank Cost Efficiency in Europe: Environmental and Productivity Influences.
Santiago Carbó Valverde, David B. Humphrey y Rafael López del Paso
- 209/2005 La elasticidad de sustitución intertemporal con preferencias no separables intratemporalmente: los casos de Alemania, España y Francia.
Elena Márquez de la Cruz, Ana R. Martínez Cañete y Inés Pérez-Soba Aguilar
- 210/2005 Contribución de los efectos tamaño, book-to-market y momentum a la valoración de activos: el caso español.
Begoña Font-Belaire y Alfredo Juan Grau-Grau
- 211/2005 Permanent income, convergence and inequality among countries
José M. Pastor and Lorenzo Serrano
- 212/2005 The Latin Model of Welfare: Do 'Insertion Contracts' Reduce Long-Term Dependence?
Luis Ayala and Magdalena Rodríguez
- 213/2005 The effect of geographic expansion on the productivity of Spanish savings banks
Manuel Illueca, José M. Pastor and Emili Tortosa-Ausina
- 214/2005 Dynamic network interconnection under consumer switching costs
Ángel Luis López Rodríguez
- 215/2005 La influencia del entorno socioeconómico en la realización de estudios universitarios: una aproximación al caso español en la década de los noventa
Marta Rahona López
- 216/2005 The valuation of spanish ipos: efficiency analysis
Susana Álvarez Otero
- 217/2005 On the generation of a regular multi-input multi-output technology using parametric output distance functions
Sergio Perelman and Daniel Santin
- 218/2005 La gobernanza de los procesos parlamentarios: la organización industrial del congreso de los diputados en España
Gonzalo Caballero Miguez
- 219/2005 Determinants of bank market structure: Efficiency and political economy variables
Francisco González
- 220/2005 Agresividad de las órdenes introducidas en el mercado español: estrategias, determinantes y medidas de performance
David Abad Díaz

- 221/2005 Tendencia post-anuncio de resultados contables: evidencia para el mercado español
Carlos Forner Rodríguez, Joaquín Marhuenda Fructuoso y Sonia Sanabria García
- 222/2005 Human capital accumulation and geography: empirical evidence in the European Union
Jesús López-Rodríguez, J. Andrés Faña y Jose Lopez Rodríguez
- 223/2005 Auditors' Forecasting in Going Concern Decisions: Framing, Confidence and Information Processing
Waymond Rodgers and Andrés Guiral
- 224/2005 The effect of Structural Fund spending on the Galician region: an assessment of the 1994-1999 and 2000-2006 Galician CSFs
José Ramón Cancelo de la Torre, J. Andrés Faña and Jesús López-Rodríguez
- 225/2005 The effects of ownership structure and board composition on the audit committee activity: Spanish evidence
Carlos Fernández Méndez and Rubén Arrondo García
- 226/2005 Cross-country determinants of bank income smoothing by managing loan loss provisions
Ana Rosa Fonseca and Francisco González
- 227/2005 Incumplimiento fiscal en el irpf (1993-2000): un análisis de sus factores determinantes
Alejandro Estellér Moré
- 228/2005 Region versus Industry effects: volatility transmission
Pilar Soriano Felipe and Francisco J. Climent Diranzo
- 229/2005 Concurrent Engineering: The Moderating Effect Of Uncertainty On New Product Development Success
Daniel Vázquez-Bustelo and Sandra Valle
- 230/2005 On zero lower bound traps: a framework for the analysis of monetary policy in the 'age' of central banks
Alfonso Palacio-Vera
- 231/2005 Reconciling Sustainability and Discounting in Cost Benefit Analysis: a methodological proposal
M. Carmen Almansa Sáez and Javier Calatrava Requena
- 232/2005 Can The Excess Of Liquidity Affect The Effectiveness Of The European Monetary Policy?
Santiago Carbó Valverde and Rafael López del Paso
- 233/2005 Inheritance Taxes In The Eu Fiscal Systems: The Present Situation And Future Perspectives.
Miguel Angel Barberán Lahuerta
- 234/2006 Bank Ownership And Informativeness Of Earnings.
V́ctor M. González
- 235/2006 Developing A Predictive Method: A Comparative Study Of The Partial Least Squares Vs Maximum Likelihood Techniques.
Waymond Rodgers, Paul Pavlou and Andres Guiral.
- 236/2006 Using Compromise Programming for Macroeconomic Policy Making in a General Equilibrium Framework: Theory and Application to the Spanish Economy.
Francisco J. André, M. Alejandro Cardenete y Carlos Romero.

- 237/2006 Bank Market Power And Sme Financing Constraints.
Santiago Carbó-Valverde, Francisco Rodríguez-Fernández y Gregory F. Udell.
- 238/2006 Trade Effects Of Monetary Agreements: Evidence For Oecd Countries.
Salvador Gil-Pareja, Rafael Llorca-Vivero y José Antonio Martínez-Serrano.
- 239/2006 The Quality Of Institutions: A Genetic Programming Approach.
Marcos Álvarez-Díaz y Gonzalo Caballero Miguez.
- 240/2006 La interacción entre el éxito competitivo y las condiciones del mercado doméstico como determinantes de la decisión de exportación en las Pymes.
Francisco García Pérez.
- 241/2006 Una estimación de la depreciación del capital humano por sectores, por ocupación y en el tiempo.
Inés P. Murillo.
- 242/2006 Consumption And Leisure Externalities, Economic Growth And Equilibrium Efficiency.
Manuel A. Gómez.
- 243/2006 Measuring efficiency in education: an analysis of different approaches for incorporating non-discretionary inputs.
Jose Manuel Cordero-Ferrera, Francisco Pedraja-Chaparro y Javier Salinas-Jiménez
- 244/2006 Did The European Exchange-Rate Mechanism Contribute To The Integration Of Peripheral Countries?.
Salvador Gil-Pareja, Rafael Llorca-Vivero y José Antonio Martínez-Serrano
- 245/2006 Intergenerational Health Mobility: An Empirical Approach Based On The Echp.
Marta Pascual and David Cantarero
- 246/2006 Measurement and analysis of the Spanish Stock Exchange using the Lyapunov exponent with digital technology.
Salvador Rojí Ferrari and Ana Gonzalez Marcos
- 247/2006 Testing For Structural Breaks In Variance With additive Outliers And Measurement Errors.
Paulo M.M. Rodrigues and Antonio Rubia
- 248/2006 The Cost Of Market Power In Banking: Social Welfare Loss Vs. Cost Inefficiency.
Joaquín Maudos and Juan Fernández de Guevara
- 249/2006 Elasticidades de largo plazo de la demanda de vivienda: evidencia para España (1885-2000).
Desiderio Romero Jordán, José Félix Sanz Sanz y César Pérez López
- 250/2006 Regional Income Disparities in Europe: What role for location?.
Jesús López-Rodríguez and J. Andrés Faña
- 251/2006 Funciones abreviadas de bienestar social: Una forma sencilla de simultanear la medición de la eficiencia y la equidad de las políticas de gasto público.
Nuria Badenes Plá y Daniel Santín González
- 252/2006 "The momentum effect in the Spanish stock market: Omitted risk factors or investor behaviour?".
Luis Muga and Rafael Santamaría
- 253/2006 Dinámica de precios en el mercado español de gasolina: un equilibrio de colusión tácita.
Jordi Perdiguero García

- 254/2006 Desigualdad regional en España: renta permanente versus renta corriente.
José M. Pastor, Empar Pons y Lorenzo Serrano
- 255/2006 Environmental implications of organic food preferences: an application of the impure public goods model.
Ana Maria Aldanondo-Ochoa y Carmen Almansa-Sáez
- 256/2006 Family tax credits versus family allowances when labour supply matters: Evidence for Spain.
José Felix Sanz-Sanz, Desiderio Romero-Jordán y Santiago Álvarez-García
- 257/2006 La internacionalización de la empresa manufacturera española: efectos del capital humano genérico y específico.
José López Rodríguez
- 258/2006 Evaluación de las migraciones interregionales en España, 1996-2004.
María Martínez Torres
- 259/2006 Efficiency and market power in Spanish banking.
Rolf Färe, Shawna Grosskopf y Emili Tortosa-Ausina.
- 260/2006 Asimetrías en volatilidad, beta y contagios entre las empresas grandes y pequeñas cotizadas en la bolsa española.
Helena Chuliá y Hipòlit Torró.
- 261/2006 Birth Replacement Ratios: New Measures of Period Population Replacement.
José Antonio Ortega.
- 262/2006 Accidentes de tráfico, víctimas mortales y consumo de alcohol.
José M^a Arranz y Ana I. Gil.
- 263/2006 Análisis de la Presencia de la Mujer en los Consejos de Administración de las Mil Mayores Empresas Españolas.
Ruth Mateos de Cabo, Lorenzo Escot Mangas y Ricardo Gimeno Nogués.
- 264/2006 Crisis y Reforma del Pacto de Estabilidad y Crecimiento. Las Limitaciones de la Política Económica en Europa.
Ignacio Álvarez Peralta.
- 265/2006 Have Child Tax Allowances Affected Family Size? A Microdata Study For Spain (1996-2000).
Jaime Vallés-Giménez y Anabel Zárate-Marco.
- 266/2006 Health Human Capital And The Shift From Foraging To Farming.
Paolo Rungo.
- 267/2006 Financiación Autonómica y Política de la Competencia: El Mercado de Gasolina en Canarias.
Juan Luis Jiménez y Jordi Perdiguero.
- 268/2006 El cumplimiento del Protocolo de Kyoto para los hogares españoles: el papel de la imposición sobre la energía.
Desiderio Romero-Jordán y José Félix Sanz-Sanz.
- 269/2006 Banking competition, financial dependence and economic growth
Joaquín Maudos y Juan Fernández de Guevara
- 270/2006 Efficiency, subsidies and environmental adaptation of animal farming under CAP
Werner Kleinhanß, Carmen Murillo, Carlos San Juan y Stefan Sperlich

- 271/2006 Interest Groups, Incentives to Cooperation and Decision-Making Process in the European Union
A. Garcia-Lorenzo y Jesús López-Rodríguez
- 272/2006 Riesgo asimétrico y estrategias de momentum en el mercado de valores español
Luis Muga y Rafael Santamaría
- 273/2006 Valoración de capital-riesgo en proyectos de base tecnológica e innovadora a través de la teoría de opciones reales
Gracia Rubio Martín
- 274/2006 Capital stock and unemployment: searching for the missing link
Ana Rosa Martínez-Cañete, Elena Márquez de la Cruz, Alfonso Palacio-Vera and Inés Pérez-Soba Aguilar
- 275/2006 Study of the influence of the voters' political culture on vote decision through the simulation of a political competition problem in Spain
Sagrario Lantarón, Isabel Lillo, M^a Dolores López and Javier Rodrigo
- 276/2006 Investment and growth in Europe during the Golden Age
Antonio Cubel and M^a Teresa Sanchis
- 277/2006 Efectos de vincular la pensión pública a la inversión en cantidad y calidad de hijos en un modelo de equilibrio general
Robert Meneu Gaya
- 278/2006 El consumo y la valoración de activos
Elena Márquez y Belén Nieto
- 279/2006 Economic growth and currency crisis: A real exchange rate entropic approach
David Matesanz Gómez y Guillermo J. Ortega
- 280/2006 Three measures of returns to education: An illustration for the case of Spain
María Arrazola y José de Hevia
- 281/2006 Composition of Firms versus Composition of Jobs
Antoni Cunyat
- 282/2006 La vocación internacional de un holding tranviario belga: la Compagnie Mutuelle de Tramways, 1895-1918
Alberte Martínez López
- 283/2006 Una visión panorámica de las entidades de crédito en España en la última década.
Constantino García Ramos
- 284/2006 Foreign Capital and Business Strategies: a comparative analysis of urban transport in Madrid and Barcelona, 1871-1925
Alberte Martínez López
- 285/2006 Los intereses belgas en la red ferroviaria catalana, 1890-1936
Alberte Martínez López
- 286/2006 The Governance of Quality: The Case of the Agrifood Brand Names
Marta Fernández Barcala, Manuel González-Díaz y Emmanuel Raynaud
- 287/2006 Modelling the role of health status in the transition out of malthusian equilibrium
Paolo Rungo, Luis Currais and Berta Rivera
- 288/2006 Industrial Effects of Climate Change Policies through the EU Emissions Trading Scheme
Xavier Labandeira and Miguel Rodríguez

- 289/2006 Globalisation and the Composition of Government Spending: An analysis for OECD countries
Norman Gemmell, Richard Kneller and Ismael Sanz
- 290/2006 La producción de energía eléctrica en España: Análisis económico de la actividad tras la liberalización del Sector Eléctrico
Fernando Hernández Martínez
- 291/2006 Further considerations on the link between adjustment costs and the productivity of R&D investment: evidence for Spain
Desiderio Romero-Jordán, José Félix Sanz-Sanz and Inmaculada Álvarez-Ayuso
- 292/2006 Una teoría sobre la contribución de la función de compras al rendimiento empresarial
Javier González Benito
- 293/2006 Agility drivers, enablers and outcomes: empirical test of an integrated agile manufacturing model
Daniel Vázquez-Bustelo, Lucía Avella and Esteban Fernández
- 294/2006 Testing the parametric vs the semiparametric generalized mixed effects models
María José Lombardía and Stefan Sperlich
- 295/2006 Nonlinear dynamics in energy futures
Mariano Matilla-García
- 296/2006 Estimating Spatial Models By Generalized Maximum Entropy Or How To Get Rid Of W
Esteban Fernández Vázquez, Matías Mayor Fernández and Jorge Rodríguez-Valez
- 297/2006 Optimización fiscal en las transmisiones lucrativas: análisis metodológico
Félix Domínguez Barrero
- 298/2006 La situación actual de la banca online en España
Francisco José Climent Diranzo y Alexandre Momparler Pechuán
- 299/2006 Estrategia competitiva y rendimiento del negocio: el papel mediador de la estrategia y las capacidades productivas
Javier González Benito y Isabel Suárez González
- 300/2006 A Parametric Model to Estimate Risk in a Fixed Income Portfolio
Pilar Abad and Sonia Benito
- 301/2007 Análisis Empírico de las Preferencias Sociales Respecto del Gasto en Obra Social de las Cajas de Ahorros
Alejandro Esteller-Moré, Jonathan Jorba Jiménez y Albert Solé-Ollé
- 302/2007 Assessing the enlargement and deepening of regional trading blocs: The European Union case
Salvador Gil-Pareja, Rafael Llorca-Vivero y José Antonio Martínez-Serrano
- 303/2007 ¿Es la Franquicia un Medio de Financiación?: Evidencia para el Caso Español
Vanessa Solís Rodríguez y Manuel González Díaz
- 304/2007 On the Finite-Sample Biases in Nonparametric Testing for Variance Constancy
Paulo M.M. Rodrigues and Antonio Rubia
- 305/2007 Spain is Different: Relative Wages 1989-98
José Antonio Carrasco Gallego

- 306/2007 Poverty reduction and SAM multipliers: An evaluation of public policies in a regional framework
Francisco Javier De Miguel-Vélez y Jesús Pérez-Mayo
- 307/2007 La Eficiencia en la Gestión del Riesgo de Crédito en las Cajas de Ahorro
Marcelino Martínez Cabrera
- 308/2007 Optimal environmental policy in transport: unintended effects on consumers' generalized price
M. Pilar Socorro and Ofelia Betancor
- 309/2007 Agricultural Productivity in the European Regions: Trends and Explanatory Factors
Roberto Ezcurra, Belen Iraizoz, Pedro Pascual and Manuel Rapún
- 310/2007 Long-run Regional Population Divergence and Modern Economic Growth in Europe: a Case Study of Spain
María Isabel Ayuda, Fernando Collantes and Vicente Pinilla
- 311/2007 Financial Information effects on the measurement of Commercial Banks' Efficiency
Borja Amor, María T. Tascón and José L. Fanjul
- 312/2007 Neutralidad e incentivos de las inversiones financieras en el nuevo IRPF
Félix Domínguez Barrero
- 313/2007 The Effects of Corporate Social Responsibility Perceptions on The Valuation of Common Stock
Waymond Rodgers , Helen Choy and Andres Guiral-Contreras
- 314/2007 Country Creditor Rights, Information Sharing and Commercial Banks' Profitability Persistence across the world
Borja Amor, María T. Tascón and José L. Fanjul
- 315/2007 ¿Es Relevante el Déficit Corriente en una Unión Monetaria? El Caso Español
Javier Blanco González y Ignacio del Rosal Fernández
- 316/2007 The Impact of Credit Rating Announcements on Spanish Corporate Fixed Income Performance: Returns, Yields and Liquidity
Pilar Abad, Antonio Díaz and M. Dolores Robles
- 317/2007 Indicadores de Lealtad al Establecimiento y Formato Comercial Basados en la Distribución del Presupuesto
Cesar Augusto Bustos Reyes y Óscar González Benito
- 318/2007 Migrants and Market Potential in Spain over The XXth Century: A Test Of The New Economic Geography
Daniel A. Tirado, Jordi Pons, Elisenda Paluzie and Javier Silvestre
- 319/2007 El Impacto del Coste de Oportunidad de la Actividad Emprendedora en la Intención de los Ciudadanos Europeos de Crear Empresas
Luis Miguel Zapico Aldeano
- 320/2007 Los belgas y los ferrocarriles de vía estrecha en España, 1887-1936
Alberte Martínez López
- 321/2007 Competición política bipartidista. Estudio geométrico del equilibrio en un caso ponderado
Isabel Lillo, M^a Dolores López y Javier Rodrigo
- 322/2007 Human resource management and environment management systems: an empirical study
M^a Concepción López Fernández, Ana M^a Serrano Bedía and Gema García Piqueres

- 323/2007 Wood and industrialization. evidence and hypotheses from the case of Spain, 1860-1935.
Iñaki Iriarte-Goñi and María Isabel Ayuda Bosque
- 324/2007 New evidence on long-run monetary neutrality.
J. Cunado, L.A. Gil-Alana and F. Perez de Gracia
- 325/2007 Monetary policy and structural changes in the volatility of us interest rates.
Juncal Cuñado, Javier Gomez Biscarri and Fernando Perez de Gracia
- 326/2007 The productivity effects of intrafirm diffusion.
Lucio Fuentelsaz, Jaime Gómez and Sergio Palomas
- 327/2007 Unemployment duration, layoffs and competing risks.
J.M. Arranz, C. García-Serrano and L. Toharia
- 328/2007 El grado de cobertura del gasto público en España respecto a la UE-15
Nuria Rueda, Begoña Barruso, Carmen Calderón y M^a del Mar Herrador
- 329/2007 The Impact of Direct Subsidies in Spain before and after the CAP'92 Reform
Carmen Murillo, Carlos San Juan and Stefan Sperlich
- 330/2007 Determinants of post-privatisation performance of Spanish divested firms
Laura Cabeza García and Silvia Gómez Ansón
- 331/2007 ¿Por qué deciden diversificar las empresas españolas? Razones oportunistas versus razones económicas
Almudena Martínez Campillo
- 332/2007 Dynamical Hierarchical Tree in Currency Markets
Juan Gabriel Brida, David Matesanz Gómez and Wiston Adrián Risso
- 333/2007 Los determinantes sociodemográficos del gasto sanitario. Análisis con microdatos individuales
Ana María Angulo, Ramón Barberán, Pilar Egea y Jesús Mur
- 334/2007 Why do companies go private? The Spanish case
Inés Pérez-Soba Aguilar
- 335/2007 The use of gis to study transport for disabled people
Verónica Cañal Fernández
- 336/2007 The long run consequences of M&A: An empirical application
Cristina Bernad, Lucio Fuentelsaz and Jaime Gómez
- 337/2007 Las clasificaciones de materias en economía: principios para el desarrollo de una nueva clasificación
Valentín Edo Hernández
- 338/2007 Reforming Taxes and Improving Health: A Revenue-Neutral Tax Reform to Eliminate Medical and Pharmaceutical VAT
Santiago Álvarez-García, Carlos Pestana Barros y Juan Prieto-Rodríguez
- 339/2007 Impacts of an iron and steel plant on residential property values
Celia Bilbao-Terol
- 340/2007 Firm size and capital structure: Evidence using dynamic panel data
Víctor M. González and Francisco González

- 341/2007 ¿Cómo organizar una cadena hotelera? La elección de la forma de gobierno
Marta Fernández Barcala y Manuel González Díaz
- 342/2007 Análisis de los efectos de la decisión de diversificar: un contraste del marco teórico “Agencia-Stewardship”
Almudena Martínez Campillo y Roberto Fernández Gago
- 343/2007 Selecting portfolios given multiple eurostoxx-based uncertainty scenarios: a stochastic goal programming approach from fuzzy betas
Enrique Ballester, Blanca Pérez-Gladish, Mar Arenas-Parra and Amelia Bilbao-Terol
- 344/2007 “El bienestar de los inmigrantes y los factores implicados en la decisión de emigrar”
Anastasia Hernández Alemán y Carmelo J. León
- 345/2007 Governance Decisions in the R&D Process: An Integrative Framework Based on TCT and Knowledge View of The Firm.
Andrea Martínez-Noya and Esteban García-Canal
- 346/2007 Diferencias salariales entre empresas públicas y privadas. El caso español
Begoña Cueto y Nuria Sánchez- Sánchez
- 347/2007 Effects of Fiscal Treatments of Second Home Ownership on Renting Supply
Celia Bilbao Terol and Juan Prieto Rodríguez
- 348/2007 Auditors’ ethical dilemmas in the going concern evaluation
Andres Guiral, Waymond Rodgers, Emiliano Ruiz and Jose A. Gonzalo
- 349/2007 Convergencia en capital humano en España. Un análisis regional para el periodo 1970-2004
Susana Morales Sequera y Carmen Pérez Esparrells
- 350/2007 Socially responsible investment: mutual funds portfolio selection using fuzzy multiobjective programming
Blanca M^a Pérez-Gladish, Mar Arenas-Parra , Amelia Bilbao-Terol and M^a Victoria Rodríguez-Uría
- 351/2007 Persistencia del resultado contable y sus componentes: implicaciones de la medida de ajustes por devengo
Raúl Iñiguez Sánchez y Francisco Poveda Fuentes
- 352/2007 Wage Inequality and Globalisation: What can we Learn from the Past? A General Equilibrium Approach
Concha Betrán, Javier Ferri and Maria A. Pons
- 353/2007 Eficacia de los incentivos fiscales a la inversión en I+D en España en los años noventa
Desiderio Romero Jordán y José Félix Sanz Sanz
- 354/2007 Convergencia regional en renta y bienestar en España
Robert Meneu Gaya
- 355/2007 Tributación ambiental: Estado de la Cuestión y Experiencia en España
Ana Carrera Poncela
- 356/2007 Salient features of dependence in daily us stock market indices
Luis A. Gil-Alana, Juncal Cuñado and Fernando Pérez de Gracia
- 357/2007 La educación superior: ¿un gasto o una inversión rentable para el sector público?
Inés P. Murillo y Francisco Pedraja

- 358/2007 Effects of a reduction of working hours on a model with job creation and job destruction
Emilio Domínguez, Miren Ullibarri y Idoya Zabaleta
- 359/2007 Stock split size, signaling and earnings management: Evidence from the Spanish market
José Yagüe, J. Carlos Gómez-Sala and Francisco Poveda-Fuentes
- 360/2007 Modelización de las expectativas y estrategias de inversión en mercados de derivados
Begoña Font-Belaire
- 361/2008 Trade in capital goods during the golden age, 1953-1973
M^a Teresa Sanchis and Antonio Cubel
- 362/2008 El capital económico por riesgo operacional: una aplicación del modelo de distribución de pérdidas
Enrique José Jiménez Rodríguez y José Manuel Fera Domínguez
- 363/2008 The drivers of effectiveness in competition policy
Joan-Ramon Borrell and Juan-Luis Jiménez
- 364/2008 Corporate governance structure and board of directors remuneration policies: evidence from Spain
Carlos Fernández Méndez, Rubén Arrondo García and Enrique Fernández Rodríguez
- 365/2008 Beyond the disciplinary role of governance: how boards and donors add value to Spanish foundations
Pablo De Andrés Alonso, Valentín Azofra Palenzuela y M. Elena Romero Merino
- 366/2008 Complejidad y perfeccionamiento contractual para la contención del oportunismo en los acuerdos de franquicia
Vanessa Solís Rodríguez y Manuel González Díaz
- 367/2008 Inestabilidad y convergencia entre las regiones europeas
Jesús Mur, Fernando López y Ana Angulo
- 368/2008 Análisis espacial del cierre de explotaciones agrarias
Ana Aldanondo Ochoa, Carmen Almansa Sáez y Valero Casanovas Oliva
- 369/2008 Cross-Country Efficiency Comparison between Italian and Spanish Public Universities in the period 2000-2005
Tommaso Agasisti and Carmen Pérez Esparrells
- 370/2008 El desarrollo de la sociedad de la información en España: un análisis por comunidades autónomas
María Concepción García Jiménez y José Luis Gómez Barroso
- 371/2008 El medioambiente y los objetivos de fabricación: un análisis de los modelos estratégicos para su consecución
Lucía Avella Camarero, Esteban Fernández Sánchez y Daniel Vázquez-Bustelo
- 372/2008 Influence of bank concentration and institutions on capital structure: New international evidence
Víctor M. González and Francisco González
- 373/2008 Generalización del concepto de equilibrio en juegos de competición política
M^a Dolores López González y Javier Rodrigo Hitos
- 374/2008 Smooth Transition from Fixed Effects to Mixed Effects Models in Multi-level regression Models
María José Lombardía and Stefan Sperlich

- 375/2008 A Revenue-Neutral Tax Reform to Increase Demand for Public Transport Services
Carlos Pestana Barros and Juan Prieto-Rodriguez
- 376/2008 Measurement of intra-distribution dynamics: An application of different approaches to the European regions
Adolfo Maza, María Hierro and José Villaverde
- 377/2008 Migración interna de extranjeros y ¿nueva fase en la convergencia?
María Hierro y Adolfo Maza
- 378/2008 Efectos de la Reforma del Sector Eléctrico: Modelización Teórica y Experiencia Internacional
Ciro Eduardo Bazán Navarro
- 379/2008 A Non-Parametric Independence Test Using Permutation Entropy
Mariano Matilla-García and Manuel Ruiz Marín